

# 2026 | Course Guide

- ◆ Home
- Welcome
- VU Block Model®
- No one sees you like VU
- Your community, your VU
- Here for your whole journey
- Unlock your career journey
- Health
- Education
- Law
- Business
- Sport
- Cyber Security
- TAFE
- Skilled Trades
- Uniquely VU
- Our courses
- Our campuses
- VU Early Entry
- How to apply
- VU alumni
- VU Open Day

# Your career starts here



Educational Experience

Teaching Quality

Skills Development

Peer Engagement

QILT Student Experience Survey 2023

UNIQUELY  
YOU

Home

◆ Welcome

VU Block Model®

No one sees you like VU

Your community, your VU

Here for your whole journey

Unlock your career journey

Health

Education

Law

Business

Sport

Cyber Security

TAFE

Skilled Trades

Uniquely VU

Our courses

Our campuses

VU Early Entry

How to apply

VU alumni

VU Open Day

# Country is alive. Country is here and now and not some relic of the past.

We acknowledge and pay our deep respect to the Ancestors, Elders, and families of the Traditional Owners on all of our campuses. At Victoria University (VU) we honour Indigenous cultures. Everything we do and every decision we make is underpinned by a commitment to Protecting Country. Country is both a place of belonging and a way of believing, as well as contributing to the conservation of critical environmental and diverse cultural assets. It is a community-driven movement towards long-term social, cultural, physical, and economic prosperity and sustainability.



## Celebrating and supporting Indigenous communities

Moondani Balluk ('Embrace People' in the Woiwurrung language) is our dedicated centre for Aboriginal and Torres Strait Islander students to connect, belong and succeed.

To find out more about scholarships, placements, employment, academic and cultural support available for Aboriginal and Torres Strait Islander students, visit [vu.edu.au/indigenous-students](https://vu.edu.au/indigenous-students)

### Did you know?

A study led by Moondani Balluk has found access to a safe space for traditional Cultural practice can assist in healing from ongoing trauma, dispossession and displacement for Indigenous women.

# Welcome to VU

Dear future student,

Welcome to Victoria University (VU)! As you begin this next chapter of your life, I want to share my experiences and offer some advice to help you make the most of your VU experience.

My time at VU has been incredibly rewarding. The supportive teaching staff and the learning model have significantly impacted me: focusing on one subject at a time, I have been able to dive fully into the unit and maintain a healthy work-life balance – something that was challenging in high school.

Life at VU is dynamic and inclusive. Through volunteering for events and working as a student ambassador, I've built meaningful connections with students, staff and the VU community. Leadership opportunities and clubs have helped me grow professionally and personally.

Looking ahead to my career, VU has prepared me well for life after graduation, and the skills I've gained through practical projects will help me excel. I now feel confident in navigating challenges and know I will thrive in my cyber security career.

My advice for future VU students is simple: take full advantage of VU's resources and opportunities. Get involved with clubs, attend networking events, and volunteer whenever you can. These experiences will enhance your student life, help you build long-lasting relationships, and prepare you for success after graduation.

Most importantly, stay curious, have fun, work hard and enjoy every step of your journey!

Nachiket

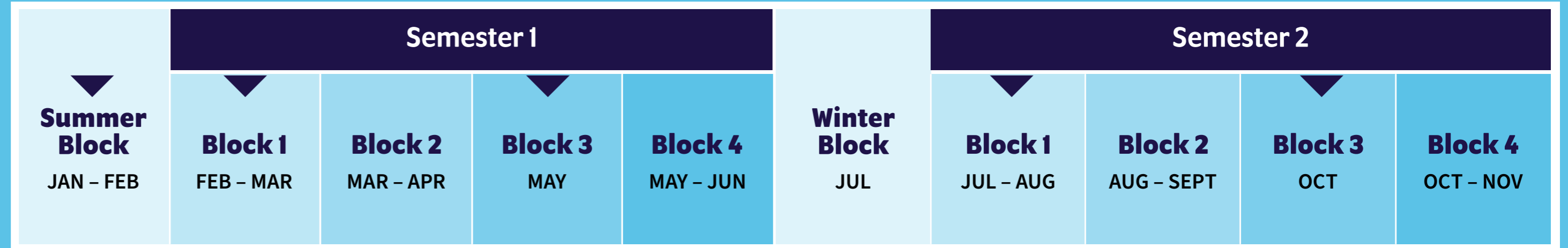
Nachiket Patel  
Bachelor of Cyber  
Security student



- Home
- Welcome
- ◆ VU Block Model®
- No one sees you like VU
- Your community, your VU
- Here for your whole journey
- Unlock your career journey
- Health
- Education
- Law
- Business
- Sport
- Cyber Security
- TAFE
- Skilled Trades
- Uniquely VU
- Our courses
- Our campuses
- VU Early Entry
- How to apply
- VU alumni
- VU Open Day

# A learning model as unique as you

How our VU Block Model® works.



▼ = up to five course entry options

Imagine a university experience that puts you at the centre. One that makes it easier to balance life and learning while helping you feel confident, engaged and connected – and ready to reach your goals, your way.

### Welcome to the VU Block Model

We're the first university in Australia to teach this way, and the first in the world to roll it out at such scale.

And the results? It's been an award-winning game-changer. Since we launched the VU Block Model, our students

have thrived both academically, and in forming deeper relationships with peers and industry.

You gain skills and experience in small, workshop-style classes, learning hands-on from industry connections and developing the networks you'll need for the career you really want.

The VU Block Model is all about setting you up for success, your way.

### Better focus, deeper learning

Study one subject at a time every four weeks, and you'll get a deeper grasp on what you're studying while enjoying a more collaborative, personalised experience – designed to help you succeed.

### Fit study around your life

With three-hour classes, three days a week, you'll have the flexibility to take charge of your busy schedule. So you can earn while you learn – and still have time for everything else in your life.

### Your voice is valued

Small, workshop-style classes ensure you never get lost in the crowd. Instead, you take an active role in your own learning, and find it easy to build meaningful connections with your peers and teachers.

### Ranked #1 in Victoria

With support on offer like no other uni, we're ranked #1 in Victoria^ for educational experience and teaching quality – showing students really do think the VU Block Model is something special.

^QILT Student Experience Survey, 2023.

“The VU Block Model was a key motivation for me to choose VU. Studying one subject at a time made it super easy to have a more balanced lifestyle and continue my usual activities and work outside of study. Deadlines are clear, and the focus is clear.”

Selin Arpaci  
Bachelor of Sport Science graduate



**1 subject every 4 weeks**



**3-hour classes, 3 days a week**



**Interactive classes, not lectures**

To find out more about our award-winning learning model, get in touch with us or visit [vu.edu.au/block-model](https://vu.edu.au/block-model)

# 2026 | Course Guide

Home

Welcome

VU Block Model®

◆ No one sees you like VU

Your community, your VU

Here for your whole journey

Unlock your career journey

Health

Education

Law

Business

Sport

Cyber Security

TAFE

Skilled Trades

Uniquely VU

Our courses

Our campuses

VU Early Entry

How to apply

VU alumni

VU Open Day

## No one sees you like VU

**At VU, everything starts with you.**

We celebrate all the ambitions, potential, and individual experiences that led you here. And we're here to help you continue to craft your unique story.

Whether you're looking to take your first career steps after school, reskill in something new, or level up your existing skills and further your career, we're entirely focused on you and your future – and helping you get to where you want to be.

On the way, you'll build valuable industry relationships and discover job opportunities before you even graduate – whether you're studying a Higher Education degree with our award-winning VU Block Model®, or one of our practical, work-based TAFE courses.

By studying with us, you'll discover how we embrace your unique experiences and individuality, and make sure your voice is always heard. Here you can succeed on your terms, and if you need a helping hand, we're always here to extend it.

At VU, you'll be surrounded by fresh ideas and diverse experiences, broadening your perspectives on the world and bringing your journey to life as you shape your next chapter.

**“Being at VU makes me so happy. For the first time I don't feel fear expressing my genuine self. When I'm surrounded by friends, caring teachers, and easily accessible support, learning becomes a joy.”**

Zara Woollard  
Bachelor of Education (P-12) student



- Home
- Welcome
- VU Block Model®
- No one sees you like VU
- ◆ Your community, your VU
- Here for your whole journey
- Unlock your career journey
- Health
- Education
- Law
- Business
- Sport
- Cyber Security
- TAFE
- Skilled Trades
- Uniquely VU
- Our courses
- Our campuses
- VU Early Entry
- How to apply
- VU alumni
- VU Open Day

# Your community, your VU

## Experience student life at VU.

No matter where you are on your journey, we're here to help you settle into VU life. Our campuses are connected and vibrant, with everything you need to make your uni experience your own.

### Join the club

Into sports, creativity, or culture? Connect with like-minded people at VU with our array of clubs – or, you can start your own! From hockey, to women in tech; outdoor adventures, to social justice groups – there's a community waiting for everyone.

### Thrive\* at VU

Enjoy the perks of our free VU Thrive\* program: take a break with fun activities, engage in healthy habits, and connect with others. Plus, with exclusive prices for you at our on-campus VU gyms and sports centres, you'll find it easy to exercise your body as well as your mind.

### Your kind of care

From self-care to childcare, you can get what you need on campus. Need a haircut, a dermal treatment, or an osteo session? Check out our student-run clinics on campus, with discounts available for students.

### Support your way

Whatever your needs are, we're here to support you. Career guidance at the VU Careers Hub, academic support, counselling, disability and accessibility services, student mentors, plus many more – our support systems are comprehensive and range across all campuses.

Visit [vu.edu.au/student-support](https://vu.edu.au/student-support) to find out more.

“I felt warmly welcomed at VU and it was great to meet people from all around the world. It's a really positive and culturally diverse environment, which helped me feel comfortable really easily.”

**Resha Sapkota**  
Bachelor of Nursing graduate

#1  
in  
Victoria

Peer  
Engagement

QILT Student Experience  
Survey 2023



Student  
LIFE



Home

Welcome

VU Block Model®

No one sees you like VU

Your community, your VU

◆ Here for your whole journey

Unlock your career journey

Health

Education

Law

Business

Sport

Cyber Security

TAFE

Skilled Trades

Uniquely VU

Our courses

Our campuses

VU Early Entry

How to apply

VU alumni

VU Open Day

# Here for your whole journey

Embarking into further study after school can feel like a big leap, but at VU, we're here to support you – both in the classroom and on (or off) campus. With a strong network of support services and programs tailored to your needs, we can help ease your transition.

## Scholarship opportunities

At VU, we believe education should be accessible to everyone. That's why we offer a variety of scholarship opportunities to support you at every stage of your learning journey. Whether you're just starting out or already on your way, we have options to help you succeed:

- ◆ **Moondani Balluk Student Grants** – for Aboriginal and Torres Strait Islander students
- ◆ **VU Access Scholarships** – for TAFE and undergrad students experiencing financial hardship
- ◆ **VU Early Entry scholarships** – [click here for more details](#)
- ◆ **Western Chances scholarships** – supporting Western Chances students who choose to study at VU (see [‘Western Chances’ on our website](#) for more info).

## VU First Year College®

We want you to start strong, so we created a unique program that meets you where you are. Our VU First Year College offers hands-on, personalised support for first-year students navigating this exciting new world – whether you're adjusting to university life or just figuring out what comes next.

## VU Kick Start Program

Are you the first in your family to attend university? 42% of our Higher Education students are – and we've created a special program just for you. The VU Kick Start Program is designed to prepare you for uni life, helping you build confidence, develop strong study habits, and connect with a supportive community. You'll feel part of a community before you even start classes.

## VU Careers Hub

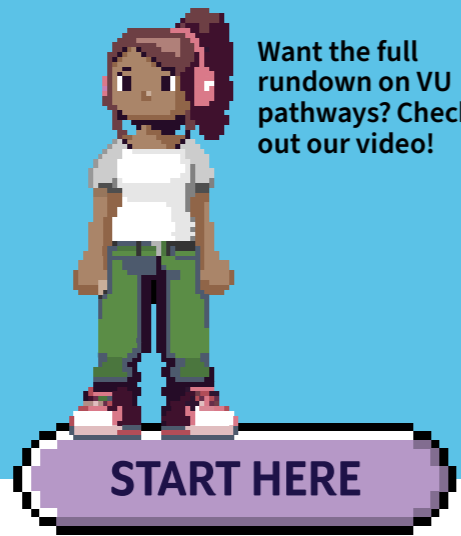
Your go-to for all stages of your career journey. From creating a job-ready resume to exploring graduate opportunities, our team of experienced job coaches and career counsellors are available for virtual and face-to-face appointments. Visit [vu.edu.au/careers-hub](https://vu.edu.au/careers-hub) to find out more.



Adam Read  
Diploma of Teacher Education Preparation  
(22602VIC) student

# 2026 | Course Guide

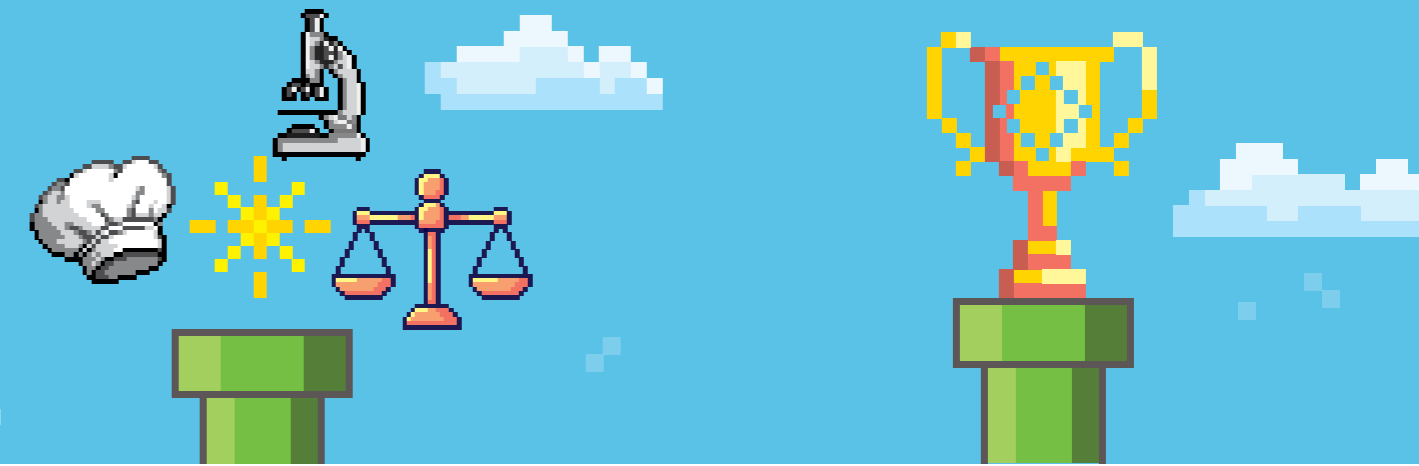
- Home
- Welcome
- VU Block Model®
- No one sees you like VU
- Your community, your VU
- Here for your whole journey
- ◆ Unlock your career journey
- Health
- Education
- Law
- Business
- Sport
- Cyber Security
- TAFE
- Skilled Trades
- Uniquely VU
- Our courses
- Our campuses
- VU Early Entry
- How to apply
- VU alumni
- VU Open Day



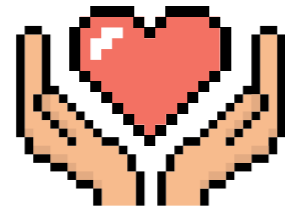
Want the full rundown on VU pathways? Check out our video!

## Unlock your career journey

Ready for a new adventure? It's time to power up your future. Leading with your strengths and passions, jump into a VU course to equip you with the skills and knowledge to excel and fulfill your final quest with an in-demand career.



### I am...



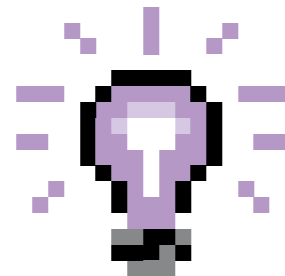
#### Caring and people-focused.

**I want to:** make a real impact.

**I love:** helping people, enriching my community, seeing family, listening to podcasts.

**I'm watching:** Grey's Anatomy, Reacher.

**I follow:** Rare Beauty, Dr Alex George.



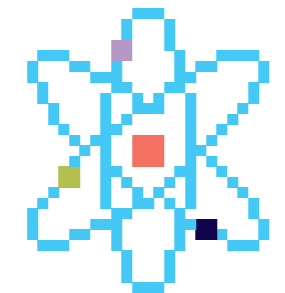
#### A hands-on creator.

**I want to:** bring ideas to life.

**I love:** creating and designing, solving problems laterally, editing videos, playing music.

**I'm watching:** The Block, Glow Up.

**I follow:** Architectural Digest, Keemo Kazi.



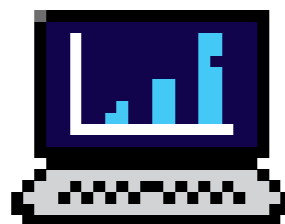
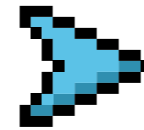
#### Into health and science.

**I want to:** support health and fitness.

**I love:** keeping my body and brain active, diving into knowledge, teaching myself new skills.

**I'm watching:** Cobra Kai, Shrinking.

**I follow:** Nike, Caitlin Clark.



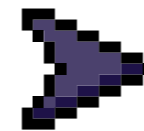
#### An analytical digital native.

**I want to:** make tech work for me.

**I love:** traversing the cybersphere, playing Fortnite, using data to answer questions.

**I'm watching:** Fallout, Arcane.

**I follow:** Apple, Pokimane.

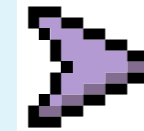


### An ideal course for me could be...

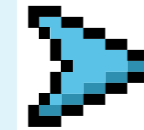
- ◆ Diploma of Nursing HLT54121
- ◆ Certificate III in Early Childhood Education & Care CHC30121
- ◆ Bachelor of Community Development
- ◆ Bachelor of Business (Human Resource Management)
- ◆ Diploma of Emergency Health Care HLT51020
- ◆ Bachelor of Education (P-12)
- ◆ Bachelor of Social Work



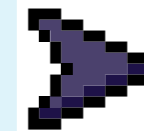
- ◆ Certificate III in Electrotechnology Electrician UEE30820
- ◆ Bachelor of Engineering (Mechanical Engineering)
- ◆ Bachelor of Building Design
- ◆ Diploma of Building & Construction (Building) CPC50220
- ◆ Certificate III in Patisserie SIT31021
- ◆ Bachelor of Screen Media
- ◆ Diploma of Beauty Therapy SHB50121



- ◆ Bachelor of Psychology
- ◆ Bachelor of Sport Management
- ◆ Bachelor of Biomedical & Exercise Science
- ◆ Bachelor of Science
- ◆ Bachelor of Human Nutrition
- ◆ Certificate III in Health Administration HLT37315
- ◆ Diploma of Remedial Massage HLT52021



- ◆ Bachelor of Accounting
- ◆ Bachelor of Information Technology
- ◆ Certificate IV in Cyber Security 22603VIC
- ◆ Undergrad Certificate in Digital Business Skills
- ◆ Bachelor of Data Science
- ◆ Diploma of Business (Enterprise)
- ◆ Bachelor of Business (Business Analytics)



### In-demand roles I could fill...

- ◆ Nurse
- ◆ Early childhood teacher
- ◆ Aged care assistant
- ◆ Workplace relations advisor
- ◆ Ambulance officer

- ◆ Electrician
- ◆ Production engineer
- ◆ Cabinet maker
- ◆ Multimedia specialist
- ◆ Pastry chef

- ◆ Clinical psychologist
- ◆ Sports coach
- ◆ Environmental health officer
- ◆ Research scientist
- ◆ Food technologist

- ◆ Tax accountant
- ◆ Cyber security analyst
- ◆ Developer programmer
- ◆ Sales manager
- ◆ Software engineer

# 2026 | Course Guide

Home

Welcome

VU Block Model®

No one sees you like VU

Your community, your VU

Here for your whole journey

Unlock your career journey

◆ Health

Education

Law

Business

Sport

Cyber Security

TAFE

Skilled Trades

Uniquely VU

Our courses

Our campuses

VU Early Entry

How to apply

VU alumni

VU Open Day

# Find a course that's uniquely yours



Skills Development  
QLT Student Experience Survey 2023

Explore some of our most popular study areas, where exceptional teaching, hands-on learning in world-class facilities, and strong industry connections come together to launch your career.

See our full list of course options.

## Health

Graduate ready to enter Australia's fastest-growing industry: healthcare. Choose from courses across areas like nursing, paramedicine, physiotherapy or speech pathology – all designed to empower you with the skills and knowledge employers want.

Whether your future self becomes a paramedic, midwife, or community healthcare worker, you'll be equipped to make a real impact on the lives of others.

### Give yourself a world-class advantage

Train with the latest tech in purpose-built facilities, including state-of-the-art clinical labs and simulation suites. At Sunshine Clinical School, you'll get hands-on experience in a teaching environment designed specifically for our nursing and midwifery students. At our St Albans campus, you'll practice real-world scenarios in simulation spaces, preparing you for the workplace.

### Learn from the best – to become the best

Want to boost your career? You'll gain valuable real-world experience and improve your job prospects through partnerships with high-calibre organisations like Western Health (one of Victoria's largest healthcare providers), Orygen, the Western Bulldogs, Ambulance Victoria, and the soon-to-be-finished Footscray Hospital right next door to VU's Footscray Park campus.

### Transform your knowledge into real-world care

If you're ready to take your learning to the next level, you'll put everything into practice in our student-run clinics: VU City Tower's Dermal Clinic, our Remedial Massage Clinic at Whitten Oval or our Osteopathy and Psychology Clinics.

"The course is so practical – you get to go into the labs and learn skills, and at the end of every semester you go on a placement so it gives you an idea what the job will be like."

Kusal Yasintha  
Bachelor of Nursing graduate

# Leading the west in health & research

We are proud to partner with the major healthcare provider in the west, Western Health. As well as working together to provide students placement opportunities to extend their skills and employability, our strong collaboration with Western Health means we can co-develop courses and carry out impactful research.

And, we're looking ahead to an exciting future: VU students will soon be able to learn in a new, world-class health and education precinct dedicated to helping shape the future of health in Melbourne's west.

Built alongside the new \$1.5 billion Footscray Hospital – the largest-ever healthcare infrastructure project undertaken in Victoria – you can start your career at the forefront of the healthcare industry.

Learning in cutting-edge facilities, with access to dedicated research spaces, simulation labs and community services, it's all designed to help you thrive.

**836** total placements completed across Western Health by VU students in 2024.

**147** VU students & recent grads gained employment with Western Health in 2024.

**Did you know?** 94% of VU Bachelor of Midwifery/ Bachelor of Nursing graduates have secured a job for 2025.

Source: College of Sport, Health & Engineering, 2024.

"It's really exciting that we've got VU and Western Health on one site and right next to each other. I think that the opportunity to enhance collaboration, the sharing of ideas, can only have wonderful outcomes for our patients and for our community."

Adjunct Professor Shane Crowe  
Executive Director of Nursing & Midwifery,  
Western Health

VU industry connections





# 2026 | Course Guide

Home

Welcome

VU Block Model®

No one sees you like VU

Your community, your VU

Here for your whole journey

Unlock your career journey

Health

Education

Law

Business

Sport

Cyber Security

TAFE

Skilled Trades

Uniquely VU

Our courses

Our campuses

VU Early Entry

How to apply

VU alumni

VU Open Day



## Education



With teachers in high demand across Australia, there's never been a better time to work in education – and make a genuine impact on the future, one young mind at a time.

You'll concentrate on early childhood, primary or secondary education and the specialisations you're passionate about while you grow into an exceptional educator.

With real classroom experience in diverse schools, you'll graduate prepared to teach and lead with confidence.

**93%** of our Bachelor of Education (P-12) graduates secured employment within the first four months of graduation.

Source: VU Australian Graduate Survey, 2023.

**"I loved my course. As part of my Bachelor of Early Childhood Education, I did three placements. Working with colleagues opened my mind to new perspectives."**

**Paw Say**  
Bachelor of Early Childhood Education graduate

### Enhance your employability

Our Bachelor of Education (P-12) is one of the few courses of its kind in Australia, enabling you to teach at both primary and secondary levels. With the unique breadth of choice across all school ages, you'll open the door to a huge amount of career opportunities.

### Learn to teach, by teaching

The best way to learn teaching? Through teaching. As you progress through your course, you'll gain valuable work experience across a range of settings while benefitting from more placement days than most other unis, ensuring you're fully job-ready when you graduate. And it's not just local: expand your horizons with global opportunities in Malaysia or India.

### Shape your teaching career your way

Studying education at VU means having choice and flexibility in where you take your career. Tailor it your own way by exploring areas that match your interests – from sports and maths, to student welfare and more.

### Be the teacher every child deserves

At VU, we'll equip you with the specialist knowledge and practical skills you need to teach in early childhood education and care.

In our Higher Education courses, you'll gain the industry experience you need through 80 days of work placements in our strong partner network. And across all, hands-on experience and expert teaching ensures you'll be job-ready as soon as you graduate.

### Building the future

With over 70,000 early childhood teachers currently employed – and annual growth in the workforce of 7,100 – Australia's early learning sector is booming. It's set for significant growth in the next ten years, with an additional 26,000 qualified early childhood education teachers estimated to be needed to meet demands.<sup>^</sup> We're helping build the future of the industry at VU – and so can you.

<sup>^</sup>Source: Jobs and Skills Australia.

### Looking to fast-track your career?

Start with tuition fee-free TAFE and secure guaranteed entry into the second year of our Bachelor of Early Childhood Education. The path to becoming a kindergarten teacher or early childhood educator has never been clearer.

### Did you know?

A study by VU's Mitchell Institute has mapped childcare accessibility for more than 10 million children, across nine nations, including Australia. This world-first research, down to postcode level, is providing parents and policymakers with a detailed analysis on the current childcare accessibility challenges facing them.

We're helping inform early education policies around the world – and we're not done yet.

VU industry connections



# 2026 | Course Guide

- Home
- Welcome
- VU Block Model®
- No one sees you like VU
- Your community, your VU
- Here for your whole journey
- Unlock your career journey
- Health
- Education
- ◆ Law
- ◆ Business
- Sport
- Cyber Security
- TAFE
- Skilled Trades
- Uniquely VU
- Our courses
- Our campuses
- VU Early Entry
- How to apply
- VU alumni
- VU Open Day



## Law

Kick start your career in law at VU, learning theoretical knowledge alongside practical skills and immersing yourself in a purpose-driven course – and graduate from your degree highly adaptable, employable, and with the strong skills required across the legal industry.

Whether you become a lawyer, policy advisor or human rights advocate, you'll build your confidence, networks and become empowered to lead change where it's needed most.

### Learn right in the heart of our CBD

Study in the heart of Melbourne's legal precinct, where you'll have access to our historic law building, a specialist law library, and on-campus law firm Sharpe and Abel. Put law into practice and develop essential job skills in our renowned Victoria Law School Moot (simulation) Court that mirrors the real experience.

### Put your knowledge into practice

You'll have access to work placements with our partners, including County Court of Victoria, Victoria Legal Aid, Brimbank Melton Community Legal Centre, the Victoria Police Prosecutions Program, State Trustees, and the Department of Justice Victoria. Learn to apply your knowledge in real-world settings while building out your professional network.

### Find the right path to your law career

There are multiple ways to your career, including our TAFE pathway, which guarantees you a place in our Bachelor of Laws. You can choose to specialise in areas like criminology, or Australia's leading program in migration law, tailoring your studies to match your passion.

**26.5%** By 2029, employment in Australia's legal, social & welfare sector is predicted to grow by 26.5%.

Source: Jobs and Skills Australia, 2024.



Access your dream law pathway no matter your ATAR! Just start with our Advanced Diploma of Legal Practice 22565VIC, and you'll be guaranteed entry into the Bachelor of Laws (with credits!) once you complete it.



## Business

Develop the practical, in-demand skills at VU to succeed in today's fast-paced and ever-changing business world.

From accounting to international trade – and event management to data science – you'll find the flexibility to tailor your business studies at VU, while testing your knowledge in real settings with 110 hours of work placement. Whether you jump into the fast-paced action of hospitality or become a human resources expert, your options are endless, and you'll uncover a world of opportunities.

### Dive into where it all happens

Fully immerse yourself in the world of business, studying at our state-of-the-art VU City Tower in the heart of Melbourne's CBD. You'll gain invaluable work experience and build networks pre-graduation through our strong partnerships with top companies like ANZ, KPMG, and Crown Resorts.

### Shape your degree to match your dream

Tailor your degree to your passions with 12 exciting majors and 19 complementary minors, offering a diverse range of skill sets and industry pathways. You can also choose to study 100% online for select courses, available on both full-time and part-time schedules.

### Give yourself an edge

As you build your business profile, you'll have the opportunity to earn industry-recognised certifications, including SAP and Microsoft Azure, boosting your credentials and enhancing your prospects.

**21%** Employment in the business, human resource and marketing sector is predicted to grow by 21% by 2034.

Source: Jobs and Skills Australia, 2024.

“Our first port of call is VU students. We know that business graduates who have completed their course at VU are well prepared, and ready to experience the real world.”

Operations Manager  
Melbourne Skydeck

VU industry connections



# 2026 | Course Guide

- Home
- Welcome
- VU Block Model®
- No one sees you like VU
- Your community, your VU
- Here for your whole journey
- Unlock your career journey
- Health
- Education
- Law
- Business
- ◆ Sport
- ◆ Cyber Security
- TAFE
- Skilled Trades
- Uniquely VU
- Our courses
- Our campuses
- VU Early Entry
- How to apply
- VU alumni
- VU Open Day



## Sport

Accelerate your sports career at VU: join a world-renowned sports faculty ranked seventh in the world for sports science.

From exercise science and physical education to sports management and outdoor leadership, you'll find a course at VU to kick off your next stage.

Learning from top professionals and benefitting from leading researchers, you'll experience it all within VU's state-of-the-art practical clinics – turning your passion into a real career.

### Train with the best, in world-class facilities

You'll have access to some of the best teaching and learning facilities, including specialised laboratories for exercise science, physiology, and biomechanics. At Footscray Park, you'll also benefit from the Aquatic and Fitness Centre, as well as the Altitude Hotel, which simulates high-altitude conditions for enhanced training experiences.

**#7 Globally for sports science**

Source: ShanghaiRanking 2024.

### Build your connections with industry leaders

Connect and work with top organisations like the Western Bulldogs, The Outdoor Education Group and Western United FC. This hands-on experience will not only boost your confidence but also enhance your job prospects, giving you a head-start.

### Be part of research that makes a difference

Get involved in impactful research – VU is an official FIFA Research Institute for Football Technology, so you'll have the chance to contribute to projects with global reach.

**1100** hours of student placement with VU Sport completed by VU students in 2024.

### Did you know?

VU's research has seen many sport codes change uniform options for women and girls. With 61% of surveyed referees and umpires feeling uncomfortable wearing their current uniform, our latest work looks to change the uniform game for referees and umpires.



## Cyber Security

Secure yourself a dynamic, high-paying career in one of the most in-demand fields today: cyber security. Our VU cyber grads are making waves in the industry, with many landing sought-after roles after graduating.

You'll study topics such as applied cryptography, ethical hacking and digital forensics, and get future-ready by learning how to co-pilot with AI – all while developing the critical thinking skills needed to respond to evolving cyber threats.

### Step into the future

You'll learn in some of Victoria's most advanced cyber security facilities, including the state-of-the-art Cyber Security Training Centre at St Albans. Featuring specialised attack and defend rooms, you'll learn by doing, as you step into roles such as Security Operations Centre Manager or Cyber Protector.

### Build connections to power your career

Build strong links with industry-leading organisations, including Microsoft and the Oceania Cyber Security Centre (OCSC). Work placements will boost your confidence, sharpen your skills, and set you apart in the job market.

### Learn directly from the best

You'll be able to build your expertise thanks to hands-on learning led by industry experts, experienced researchers, and lecturers at the forefront of their fields.

**5000** extra cyber security workers will be required in Australia each year, to avoid shortfall by 2030.

Source: AustCyber, 2024.

“Working in the industry now in a security operations centre, it's fantastic to see how the invaluable skills and experience I gained from my course translate perfectly to my role.”

**Krey Lacerna**  
Certificate IV in Cyber Security  
(22603VIC) graduate

VU industry connections



# 2026 | Course Guide

- Home
- Welcome
- VU Block Model®
- No one sees you like VU
- Your community, your VU
- Here for your whole journey
- Unlock your career journey
- Health
- Education
- Law
- Business
- Sport
- Cyber Security
- ◆ TAFE
- ◆ Skilled Trades
- Uniquely VU
- Our courses
- Our campuses
- VU Early Entry
- How to apply
- VU alumni
- VU Open Day

## Hands-on skills to get you job-ready



## Skilled Trades

Our TAFE courses ensure you're ready to hit the ground running in your career. Whether starting with a pre-apprenticeship or working towards an advanced diploma, we've got the support to help you reach your goals. You'll learn from industry experts in purpose-built facilities, giving you the skills and confidence to excel in today's workplaces.

### Learning that fits your life

We know life can be busy: so, you'll benefit from our flexible TAFE learning model, combining in-person classes, online learning, and on-the-job experience plus different course lengths to suit your schedule.

### Step into your future

Train in state-of-the-art, student-focused facilities like our Sunshine Skills Hub or VenU restaurant at Footscray Nicholson – built for hands-on learning through real job situations and industry standard tools.

### Build the know-how to dive straight into a job

We ensure you gain the experience you need to start working as soon as possible. Our close ties to industry mean many

opportunities for projects and placements – that help you build expertise and confidence to step into your chosen field as soon as you finish your TAFE course.

### Study for free with Free TAFE

As part of the Victorian Government's Free TAFE program, you can study tuition fee-free in many industry-recognised courses. Whether you're interested in health, hospitality, cyber security, IT, or education, we offer practical training so you can start your career while easing your worries about financial pressure.



Hey! Have you checked out our range of TAFE pathways, which will lead you straight to that dream Higher Education course?

Take the next step in your career with the practical knowledge and industry experience that a trades course at VU provides.

Whether it's construction, plumbing, or electrotechnology, we'll give you the tools to enhance your employability and skillset – because your success is our number one goal.

### Learn from industry experts in modern facilities

Immerse yourself in your trades course in some of Australia's most high-tech trades facilities like our Construction Training Centre. Building practical skills and deepening your knowledge while learning by doing, you'll be ready to achieve your future, your way.

### Build the connections to power your career

Strengthen your network and gain on-the-job experience with work placements through VU's strong industry connections and partners. Working alongside professionals in your chosen trade, you'll graduate with the skills and connections to give you a head start in your field.

### Be championed as a woman in trades

And if you're a woman looking to break into a traditionally male-dominated field, VU is here to support you at every step. As a proud partner of Tradeswomen Australia, we're committed to empowering women in trades. You'll become part of a passionate community and gain access to guidance and resources to help kick off your career.

**TOP 20** Skilled trades professions account for eight of the 20 largest occupations currently experiencing shortages in Australia.

Source: Jobs & Skills Australia, 2024.



# 2026 | Course Guide

- Home
- Welcome
- VU Block Model®
- No one sees you like VU
- Your community, your VU
- Here for your whole journey
- Unlock your career journey
- Health
- Education
- Law
- Business
- Sport
- Cyber Security
- TAFE
- Skilled Trades
- ◆ Uniquely VU
- Our courses
- Our campuses
- VU Early Entry
- How to apply
- VU alumni
- VU Open Day



## Uni for educational experience

Students rated the overall quality of their educational experience higher than any other university in Victoria.

Source: QILT Student Experience Survey 2023.



## Award-winning learning

Achieve more through our award-winning VU Block Model®. Study one subject at a time, in interactive, workshop-style classes where you can build hands-on skills.



## Uni for teaching quality

We're the number one university in Victoria for quality of teaching – rated by students.

Source: QILT Student Experience Survey 2023.



## Multiple pathways and entry options

With courses in TAFE and Higher Education, and pathways between, you can create your own path to career success at VU.



## Uni for skills development

We're Victoria's top university in skills development, ranked by students.

Source: QILT Student Experience Survey 2023.



## An easier transition

Our VU First Year College® is the first of its kind in Australia, giving you dedicated support and guidance, and easing your transition to university.

# Uniquely VU

High rankings, strong results and a diverse community – a place like no other.

## 42%

### First in family at uni

42% of our Higher Education students are the first in their family to go to uni, opening up new opportunities to help launch their chosen career.

## 38,282

### Work placements in 2024

Our students gain valuable on-the-job experience with placement opportunities through our huge network of industry partners.

## Top 2%

### Ranked top 2% worldwide

VU is ranked in the top 2% of universities worldwide.

Source: Times Higher Education 2024.

## 100+

### Over 100 cultures represented

VU celebrates diversity and has one of the most varied and inclusive student populations in Australia, with hundreds of languages spoken.

## #7

### Globally for sports science

Our industry partnerships and innovative facilities put our sports science courses in the world's top 10.

Source: ShanghaiRanking 2024

## 295,000+

### VU alumni worldwide

Our strong alumni network provides valuable connections, career support, mentorship, and opportunities for professional growth.

# Find the course that's right for you



## Educational Experience

## Teaching Quality

## Skills Development

## Peer Engagement

QILT Student Experience Survey 2023

Explore our range of undergraduate and TAFE courses and discover pathways to your future career. For full course details and admission requirements, go to [vu.edu.au](http://vu.edu.au) or click below.

## Arts & Humanities

Turn your creativity into a career with our arts and humanities courses. Build skills across communications and digital media as you learn about people, society and culture – and prepare for dynamic roles across media, arts industries, or education.

### Higher Education courses

#### Bachelor of Arts ABAB

**Duration:** 3 years. **Campus:** Footscray Park. **Other admission requirements:** Completion of an Australian Senior Secondary Certificate (VCE or equivalent) incl. Units 3 & 4: a study score of at least 25 in English (EAL) or 20 in any other English.

Pathway into this course from:	Credits
Diploma of Community Services (CHC52021)	96
Diploma of Education Studies (EDES)	96
Foundations at VU (JVAC)	0

#### Bachelor of Music ABMC\*

**Duration:** 3 years. **Campus:** Footscray Nicholson. **Other admission requirements:** Completion of an Australian Senior Secondary Certificate (VCE or equivalent) incl. Units 3 & 4: a study score of at least 25 in English (EAL) or 20 in any other English.

Pathway into this course from:	Credits
*Foundations at VU (JVAC)	0

#### Bachelor of Screen Media ABSN

**Duration:** 3 years. **Campus:** Footscray Park. **Other admission requirements:** Completion of an Australian Senior Secondary Certificate (VCE or equivalent) incl. Units 3 & 4: a study score of at least 25 in English (EAL) or 20 in any other English.

Pathway into this course from:	Credits
*Foundations at VU (JVAC)	0

## Biomedicine & Science

Help shape the future of health with biomedicine and science at VU. Gaining hands-on lab experience and industry connections, dive into scientific or biomedical research, nutrition, or take further study pathways through health and research.

### Higher Education courses

#### Undergraduate Certificate in Diet and Health HUDH

**Duration:** 0.5 years. **Campus:** Footscray Park. **Other admission requirements:** Completion of an Australian Senior Secondary Certificate (VCE or equivalent) incl. Units 3 & 4: a study score of at least 25 in English (EAL) or 20 in any other English; plus a study score of at least 20 in one of the following: Biology, Chemistry, Health & Human Development, Mathematics (any) or Physical Education.

#### Bachelor of Biomedicine HBBM

**Duration:** 3 years. **Campus:** Footscray Park, St Albans. **ATAR required:** Yes. **Other admission requirements:** Completion of an Australian Senior Secondary Certificate (VCE or equivalent) incl. Units 3 & 4: a study score of at least 30 in English (EAL) or 25 in any other English; plus a study score of at least 25 in two of the following: Biology, Chemistry, Physics or any Mathematics.

#### Undergraduate Certificate in Health Science HUH8

**Duration:** 0.5 years. **Campus:** Footscray Park. **Other admission requirements:** Completion of an Australian Senior Secondary Certificate (VCE or equivalent) incl. Units 3 & 4: a study score of at least 25 in English (EAL) or 20 in any other English.

#### Undergraduate Certificate in Science and the Environment NUSE

**Duration:** 0.5 years. **Campus:** Footscray Park. **Other admission requirements:** Completion of an Australian Senior Secondary Certificate (VCE or equivalent) incl. Units 3 & 4: a study score of at least 25 in English (EAL) or 20 in any other English; plus a study score of at least 20 in Mathematics (any).

### Postgraduate courses

#### Graduate Certificate in Digital Content Creation ATDC

**Duration:** 0.5 years. **Campus:** Online.

#### Graduate Certificate in Digital Learning and Teaching ATDI

**Duration:** 0.5 years. **Campus:** Online.

#### Graduate Certificate in Digital Media ATDM

**Duration:** 0.5 years. **Campus:** City, Online.

#### Graduate Diploma in Digital Media AGDM

**Duration:** 1 year. **Campus:** City.

#### Master of Digital Media AMDM

**Duration:** 2 years. **Campus:** City.

#### Bachelor of Biomedical Science HBBS

**Duration:** 3 years. **Campus:** St Albans. **Other admission requirements:** Completion of an Australian Senior Secondary Certificate (VCE or equivalent) incl. Units 3 & 4: a study score of at least 25 in English (EAL) or 20 in any other English; plus a study score of 20 of one of the following: Biology, Chemistry, Health and Human Development, any Mathematics or Physical Education.

Pathway into this course from:	Credits
Foundations at VU (JVAC)	0

#### Bachelor of Biomedical and Exercise Science HBES

**Duration:** 3 years. **Campus:** Footscray Park, St Albans. **ATAR required:** Yes. **Other admission requirements:** Completion of an Australian Senior Secondary Certificate (VCE or equivalent) incl. Units 3 & 4: a study score of at least 25 in English (EAL) or 20 in any other English; plus a study score of at least 20 in two of the following: Biology, Chemistry, Health & Human Development, any Mathematics or Physical Education.

#### Bachelor of Human Nutrition HBNT

**Duration:** 3 years. **Campus:** Footscray Park. **Other admission requirements:** Completion of an Australian Senior Secondary Certificate (VCE or equivalent) incl. Units 3 & 4: a study score of at least 25 in English (EAL) or 20 in any other English; plus a study score of at least 20 in one of the following: Biology, Chemistry, Health & Human Development, Mathematics (any) or Physical Education.

Pathway into this course from:	Credits
Foundations at VU (JVAC)	0

#### Bachelor of Nutritional Science/ Master of Dietetics HCND

**Duration:** 4.5 years. **Campus:** Footscray Park. **ATAR required:** Yes. **Other admission requirements:** Completion of an Australian Senior Secondary Certificate (VCE or equivalent) incl. Units 3 & 4: a study score of at least 30 in English (EAL) or 25 in any other English; plus a study score of at least 25 in two of the following: Biology, Chemistry, Physics, Health & Human Development, Mathematics (any) or Physical Education.

#### Bachelor of Science NBSC

**Duration:** 3 years. **Campus:** Footscray Park. **Other admission requirements:** Completion of an Australian Senior Secondary Certificate (VCE or equivalent) incl. Units 3 & 4: a study score of at least 25 in English (EAL) or 20 in any other English; plus a study score of at least 20 in Mathematics (any).

Pathway into this course from:	Credits
Foundations at VU (JVAC)	0

## Business & Accounting

Kick start your career in business at VU: dive into the fast-paced worlds of commerce or events, or all things numbers in accounting. Master skills across finance, marketing, or management as you network with industry leaders, tackle real-world projects, and graduate ready to thrive in global markets.

### TAFE courses

#### BAS Agent Registration Skill Set FNSS00004

**Duration:** 20 weeks. **Campus:** Footscray Nicholson.

#### Tax Law for Tax Agents Skill Set (Tax documentation) FNSS00008

**Duration:** 20 weeks. **Campus:** Footscray Nicholson.

#### Accounting Principles Skill Set FNSS00014

**Duration:** 20 weeks. **Campus:** Footscray Nicholson.

#### Certificate IV in Accounting and Bookkeeping FNS40222

**Duration:** 0.5 years. **Campus:** Footscray Nicholson. **Pathway from this course to:**

Credits	
Diploma of Accounting (FNS50222)	0

#### Certificate IV in Leadership and Management BSB40520

**Duration:** 1.5 years, 2 Traineeship. **Campus:** Industry.

#### Diploma of Accounting FNS50222

**Duration:** 0.5 years. **Campus:** Footscray Nicholson. **Other admission requirements:** Must have completed the following units of competency (or equivalent):

- Process Financial Transactions and Extract Interim Reports (FNSACC321)
- Administer Subsidiary Accounts and Ledgers (FNSACC322)
- Work Effectively in the Accounting And Bookkeeping Industry (FNSACC418)
- Prepare Financial Reports (FNSACC421) (this unit is the equivalent version of Prepare Financial Reports (BSBFIA401)).

These competencies may have been achieved through the completion of the following (or their equivalent):

- Accounting Principles Skill Set (FNSS00014); or
- Certificate IV in Accounting and Bookkeeping (FNS40222).

Pathway from this course to:	Credits
Bachelor of Accounting (BBAQ)	96
Bachelor of Business (BBNS)	96

#### Diploma of Leadership and Management BSB50420

**Duration:** 1 year. **Campus:** Industry.

Pathway from this course to:	Credits
Bachelor of Business (BBNS)	96

#### Diploma of Project Management BSB50820

**Duration:** 1.5 years. **Campus:** Online.

Pathway from this course to:	Credits
Bachelor of Business (BBNS)	96

### Higher Education courses

#### Diploma of Business (Enterprise) VDBE

**Duration:** 1 year. **Campus:** City. **Other admission requirements:** Completion of an Australian Senior Secondary Certificate (VCE or equivalent).

Pathway from this course to:	Credits
Bachelor of Business (BBNS)	96
Bachelor of Accounting (BBAQ)	72
Pathway into this course from:	Credits
Foundations at VU (JVAC)	0

#### Undergraduate Certificate in Digital Business Skills VUDS

**Duration:** 0.5 years. **Campus:** City. **Other admission requirements:** Completion of an Australian Senior Secondary Certificate (VCE or equivalent).

#### Bachelor of Science (Honours) HHSC

**Duration:** 1 year. **Campus:** Footscray Park.

### Postgraduate courses

#### Master of Dietetics HMDT

**Duration:** 2 years. **Campus:** Sunshine. **Other admission requirements:** Applicants are required to provide academic transcripts and meet the prerequisite subject requirements with their application. Applicants may be invited to attend an interview.

#### Bachelor of Accounting BBAQ

**Duration:** 3 years. **Campus:** City. **Other admission requirements:** Completion of an Australian Senior Secondary Certificate (VCE or equivalent) incl. Units 3 & 4: a study score of at least 25 in English (EAL) or 20 in any other English.

Pathway into this course from:	Credits
Diploma of Accounting (FNS50222)	96
Diploma of Business (Enterprise) (VDBE)	72
Foundations at VU (JVAC)	0

#### Bachelor of Business BBNS

**Duration:** 3 years. **Campus:** City, Online. **Other admission requirements:** Completion of an Australian Senior Secondary Certificate (VCE or equivalent) incl. Units 3 & 4: a study score of at least 25 in English (EAL) or 20 in any other English.

Pathway into this course from:	Credits
Associate Degree in Hospitality and Hotel Management (VAHH)	192
Advanced Diploma of Hospitality Management (SIT60322)	144
Diploma of Accounting (FNS50222)	96
Diploma of Business (Enterprise) (VDBE)	96
Diploma of Project Management (BSB50820)	96
Diploma of Event Management (SIT50322)	96
Diploma of Hospitality Management (SIT50422)	96
Diploma of Leadership and Management (BSB50420)	96
Diploma of Travel and Tourism Management (SIT50122)	96
Foundations at VU (JVAC)	0

#### Bachelor of Sport Management SBSM

**Duration:** 3 years. **Campus:** City. **Other admission requirements:** Completion of an Australian Senior Secondary Certificate (VCE or equivalent) incl. Units 3 & 4: a study score of at least 25 in English (EAL) or 20 in any other English.

Pathway into this course from:	Credits
Diploma of Remedial Massage (HLT52021)	0
Foundations at VU (JVAC)	0

#### Bachelor of Sport Management/ Bachelor of Business SBSB

**Duration:** 4 years. **Campus:** City. **Other admission requirements:** Completion of an Australian Senior Secondary Certificate (VCE or equivalent) incl. Units 3 & 4: a study score of at least 25 in English (EAL) or 20 in any other English.

Pathway into this course from:	Credits
Diploma of Remedial Massage (HLT52021)	0
Foundations at VU (JVAC)	0

# 2026 Course Guide

Home

Welcome

VU Block Model®

No one sees you like VU

Your community, your VU

Here for your whole journey

Unlock your career journey

Health

Education

Law

Business

Sport

Cyber Security

TAFE

Skilled Trades

Uniquely VU

Our courses

Our campuses

VU Early Entry

How to apply

VU alumni

VU Open Day

Postgraduate courses
<b>Graduate Certificate in Business</b> BTBU <b>Duration:</b> 8 months. <b>Campus:</b> Online.
<b>Graduate Certificate in Business Administration</b> BTPF <b>Duration:</b> 0.5 years. <b>Campus:</b> City, Online.
<b>Graduate Certificate in Business Analytics</b> BTBI <b>Duration:</b> 0.5 years. <b>Campus:</b> City, Online.
<b>Graduate Certificate in Change Management</b> BTCM <b>Duration:</b> 8 months. <b>Campus:</b> Online.
<b>Graduate Certificate in Enterprise and Resource Planning Systems</b> BTEN <b>Duration:</b> 0.5 years. <b>Campus:</b> City.
<b>Graduate Certificate in Finance</b> BTFF <b>Duration:</b> 8 months. <b>Campus:</b> Online.
<b>Graduate Certificate in Financial Planning</b> BTFFP <b>Duration:</b> 8 months. <b>Campus:</b> Online.

<b>Graduate Certificate in Industrial Relations and Human Resource Management</b> BTIH <b>Duration:</b> 0.5 years. <b>Campus:</b> City.
<b>Graduate Certificate in Marketing</b> BTKM <b>Duration:</b> 0.5 years. <b>Campus:</b> City.
<b>Graduate Certificate in Supply Chain Management</b> BTSP <b>Duration:</b> 0.5 years. <b>Campus:</b> City.
<b>Graduate Certificate in Tourism and Destination Management</b> BTDD <b>Duration:</b> 0.5 years. <b>Campus:</b> City.
<b>Graduate Certificate in Transport Systems</b> BTTS <b>Duration:</b> 0.5 years. <b>Campus:</b> City, Online.
<b>Graduate Diploma in Business</b> BGAB <b>Duration:</b> 1 year. <b>Campus:</b> City.
<b>Graduate Diploma in Business Administration</b> BGPB <b>Duration:</b> 1 year. <b>Campus:</b> City.
<b>Graduate Diploma in Financial Planning</b> BGFP <b>Duration:</b> 16 months. <b>Campus:</b> Online.

## Community Services

Building hands-on expertise in youth work, social justice, or community development, you can make a difference with VU's community services courses. Graduate ready to support individuals, advocate for change, and shape stronger, more inclusive communities.

TAFE courses
<b>Alcohol and Other Drugs Skill Set</b> CHCSS00093 <b>Duration:</b> 15 weeks. <b>Campus:</b> Online.
<b>Course in Identifying and Responding to Family Violence Risk</b> 22660VIC <b>Duration:</b> 10 weeks. <b>Campus:</b> Online.
<b>Certificate IV in Alcohol and Other Drugs</b> CHC43215 <b>Duration:</b> 1 year. <b>Campus:</b> Footscray Nicholson. <b>Other admission requirements:</b> Must be at least 18 years of age or over at the commencement of the course.
<b>Certificate IV in Youth Work</b> CHC40421 <b>Duration:</b> 1 year. <b>Campus:</b> Footscray Nicholson, Werribee. <b>Other admission requirements:</b> Must be at least 18 years of age or over at the commencement of the course.
<b>Pathway from this course to:</b> <b>Credits</b> Bachelor of Youth Work and Criminal Justice (ABYC) 0 Bachelor of Youth Work (ABYW) 0 Bachelor of Youth Work/Bachelor of Sport Management (EBYS) 0 Bachelor of Community Development (ABCD) 0

<b>Diploma of Community Services</b> CHC52021 <b>Duration:</b> 1.5 years. <b>Campus:</b> Footscray Nicholson, Werribee.
<b>Pathway from this course to:</b> <b>Credits</b> Bachelor of Arts (ABAB) 96 Bachelor of Community Development (ABCD) 96 Bachelor of Social Work (ABSW)*** 96 Bachelor of Youth Work and Criminal Justice (ABYC) 96 Bachelor of Youth Work (ABYW) 96 Bachelor of Education Studies (EBST) 96 Bachelor of Youth Work/Bachelor of Sport Management (EBYS) 48

<b>Diploma of Youth Work</b> CHC50421 <b>Duration:</b> 1.5 years. <b>Campus:</b> Footscray Nicholson, Werribee. <b>Other admission requirements:</b> Must be at least 18 years of age or over at the commencement of the course.
<b>Pathway from this course to:</b> <b>Credits</b> Bachelor of Youth Work and Criminal Justice (ABYC) 96 Bachelor of Youth Work (ABYW) 96 Bachelor of Youth Work/Bachelor of Sport Management (EBYS) 48 Bachelor of Community Development (ABCD) 48

<b>Master of Business Administration</b> BMFP <b>Duration:</b> 1.5 years. <b>Campus:</b> Online.
<b>Master of Business Administration (Global)</b> BMAG <b>Duration:</b> 2 years. <b>Campus:</b> City.
<b>Master of Business Analytics</b> BMBU <b>Duration:</b> 2 years. <b>Campus:</b> City.
<b>Master of Enterprise Resource Planning</b> BMEN <b>Duration:</b> 2 years. <b>Campus:</b> City.
<b>Master of Financial Planning</b> BMFP <b>Duration:</b> 2 years. <b>Campus:</b> Online.
<b>Master of Management</b> BMMN <b>Duration:</b> 2 years. <b>Campus:</b> City.
<b>Master of Marketing</b> BMKT <b>Duration:</b> 2 years. <b>Campus:</b> City.
<b>Master of Professional Accounting</b> BMAQ <b>Duration:</b> 2 years. <b>Campus:</b> City.
<b>Master of Project Management</b> NMPM <b>Duration:</b> 2 years. <b>Campus:</b> Footscray Park.
<b>Master of Supply Chain Management</b> BMSU <b>Duration:</b> 2 years. <b>Campus:</b> City.

Higher Education courses
<b>Bachelor of Community Development</b> ABCD <b>Duration:</b> 3 years. <b>Campus:</b> Footscray Park. <b>Other admission requirements:</b> Completion of an Australian Senior Secondary Certificate (VCE or equivalent) incl. Units 3 & 4: a study score of at least 25 in English (EAL) or 20 in any other English.
<b>Pathway into this course from:</b> <b>Credits</b> Diploma of Community Services (CHC52021) 96 Diploma of Youth Work (CHC50421) 48 Foundations at VU (JYAC) 0
<b>Bachelor of Criminal Justice</b> ABCJ <b>Duration:</b> 3 years. <b>Campus:</b> Footscray Park. <b>Other admission requirements:</b> Completion of an Australian Senior Secondary Certificate (VCE or equivalent) incl. Units 3 & 4: a study score of at least 25 in English (EAL) or 20 in any other English.
<b>Pathway into this course from:</b> <b>Credits</b> Foundations at VU (JYAC) 0
<b>Bachelor of Criminal Justice and Psychological Studies</b> ABCY <b>Duration:</b> 3 years. <b>Campus:</b> Footscray Park. <b>Other admission requirements:</b> Completion of an Australian Senior Secondary Certificate (VCE or equivalent) incl. Units 3 & 4: a study score of at least 25 in English (EAL) or 20 in any other English.

<b>Bachelor of Social Work</b> ABSW <b>Duration:</b> 4 years. <b>Campus:</b> Footscray Park. <b>Other admission requirements:</b> Completion of an Australian Senior Secondary Certificate (VCE or equivalent) incl. Units 3 & 4: a study score of at least 25 in English (EAL) or 20 in any other English.
<b>Pathway into this course from:</b> <b>Credits</b> Diploma of Community Services (CHC52021) *** 96 Foundations at VU (JYAC) *** 0
<b>Bachelor of Youth Work</b> ABYW <b>Duration:</b> 3 years. <b>Campus:</b> Footscray Park. <b>Other admission requirements:</b> Completion of an Australian Senior Secondary Certificate (VCE or equivalent) incl. Units 3 & 4: a study score of at least 25 in English (EAL) or 20 in any other English.
<b>Pathway into this course from:</b> <b>Credits</b> Diploma of Youth Work (CHC50421) 96 Diploma of Community Services (CHC52021) 96 Certificate IV in Youth Work (CHC40421) 0 Foundations at VU (JYAC) 0

## Cyber Security & IT

Secure yourself entry to the fields most in-demand today: cyber security and information technology. Engaging in hands-on learning with top industry partners, you'll build expertise in areas like web development, cyber threat, and AI – and become a leader in the evolving digital landscape.

TAFE courses
<b>Certificate III in Emerging Technologies</b> 22589VIC <b>Duration:</b> 2 years VDSS. <b>Campus:</b> Werribee.
<b>Certificate III in Information Technology</b> ICT30120 <b>Duration:</b> 0.5 years. <b>Campus:</b> Footscray Nicholson, Online.
<b>Certificate IV in Cyber Security</b> 22603VIC <b>Duration:</b> 1 year. <b>Campus:</b> St Albans, Online, Footscray Nicholson, Sunshine Werribee.
<b>Pathway from this course to:</b> <b>Credits</b> Diploma of Cyber Security (VDCS) 48 Bachelor of Cyber Security (NBCS) 24 Bachelor of Data Science (NBDS) 24 Bachelor of Information Technology (NBIT) 24
<b>Certificate IV in Information Technology</b> ICT40120 <b>Duration:</b> 1 year. <b>Campus:</b> Footscray Nicholson.
<b>Pathway from this course to:</b> <b>Credits</b> Bachelor of Cyber Security (NBCS) 24 Bachelor of Data Science (NBDS) 24 Bachelor of Information Technology (NBIT) 24

**What is credit?**  
Most Higher Education subjects (units) equal 12 credit points. If you're studying full time, you'll generally complete a total of eight subjects per year – that's four subjects in semester one and four subjects in semester two.  
For pathways that grant credits: 48 credit points is equivalent to four subjects or one semester of study (six months), 96 credit points is equivalent to eight subjects or two semesters of study (one year) and 144 credit points is equivalent to 12 subjects or three semesters of study (one and a half years).  
For more info, head to [vu.edu.au/credit](http://vu.edu.au/credit).

<b>Bachelor of Youth Work and Criminal Justice</b> ABYC <b>Duration:</b> 3 years. <b>Campus:</b> Footscray Park. <b>Other admission requirements:</b> Completion of an Australian Senior Secondary Certificate (VCE or equivalent) incl. Units 3 & 4: a study score of at least 25 in English (EAL) or 20 in any other English.
<b>Pathway into this course from:</b> <b>Credits</b> Diploma of Youth Work (CHC50421) 96 Diploma of Community Services (CHC52021) 96 Certificate IV in Youth Work (CHC40421) 0 Foundations at VU (JYAC) 0
<b>Bachelor of Youth Work/Bachelor of Sport Management</b> EBYS <b>Duration:</b> 4 years. <b>Campus:</b> Footscray Park. <b>Other admission requirements:</b> Completion of an Australian Senior Secondary Certificate (VCE or equivalent) incl. Units 3 & 4: a study score of at least 25 in English (EAL) or 20 in any other English.
<b>Pathway into this course from:</b> <b>Credits</b> Diploma of Youth Work (CHC50421) 48 Diploma of Community Services (CHC52021) 48 Certificate IV in Youth Work (CHC40421) 0

Higher Education courses
<b>Diploma of Cyber Security</b> VDCS <b>Duration:</b> 1 year. <b>Campus:</b> Footscray Nicholson. <b>Other admission requirements:</b> Successful completion of an Australian Senior Secondary Certificate (VCE or equivalent).
<b>Pathway into this course from:</b> <b>Credits</b> Certificate IV in Cyber Security (22603VIC) 48
<b>Diploma of Information Technology</b> VDIIT <b>Duration:</b> 1 year. <b>Campus:</b> Footscray Nicholson. <b>Other admission requirements:</b> Successful completion of an Australian Senior Secondary Certificate (VCE or equivalent).
<b>Pathway from this course to:</b> <b>Credits</b> Bachelor of Cyber Security (NBCS) 96 Bachelor of Data Science (NBDS) 96 Bachelor of Information Technology (NBIT) 96 Bachelor of Information Technology (Professional) (NBIP) */** 96
<b>Pathway into this course from:</b> <b>Credits</b> Foundations at VU (JYAC) 0
<b>Undergraduate Certificate in Information Technology</b> NUIIT <b>Duration:</b> 0.5 years. <b>Campus:</b> Footscray Park. <b>Other admission requirements:</b> Completion of an Australian Senior Secondary Certificate (VCE or equivalent) incl. Units 3 & 4: a study score of at least 25 in English (EAL) or 20 in any other English; plus a study score of at least 20 in Mathematics (any).
<b>Pathway into this course from:</b> <b>Credits</b> Diploma of Information Technology (VDIT) 96 Certificate IV in Cyber Security (22603VIC) 24 Certificate IV in Information Technology (ICT40120) 24 Diploma of Clinical Coding (HLT50321) 0

Postgraduate courses
<b>Graduate Certificate in International Community Development</b> ATID <b>Duration:</b> 0.5 years. <b>Campus:</b> City, Footscray Park.
<b>Graduate Diploma in International Community Development</b> AGID <b>Duration:</b> 1 year. <b>Campus:</b> City, Footscray Park.
<b>Master of International Community Development</b> AMCD <b>Duration:</b> 2 years. <b>Campus:</b> City.

<b>Undergraduate Certificate in Web Development and Programming</b> VUWD <b>Duration:</b> 0.5 years. <b>Campus:</b> Footscray Nicholson. <b>Other admission requirements:</b> Successful completion of an Australian Senior Secondary Certificate (VCE or equivalent).
<b>Bachelor of Cyber Security</b> NBCS <b>Duration:</b> 3 years. <b>Campus:</b> Footscray Park. <b>Other admission requirements:</b> Completion of an Australian Senior Secondary Certificate (VCE or equivalent) incl. Units 3 & 4: a study score of at least 25 in English (EAL) or 20 in any other English; plus a study score of at least 20 in Mathematics (any).
<b>Pathway into this course from:</b> <b>Credits</b> Diploma of Information Technology (VDIT) 96 Certificate IV in Cyber Security (22603VIC) 24 Certificate IV in Information Technology (ICT40120) 24
<b>Bachelor of Data Science</b> NBDS <b>Duration:</b> 3 years. <b>Campus:</b> Footscray Park. <b>Other admission requirements:</b> Completion of an Australian Senior Secondary Certificate (VCE or equivalent) incl. Units 3 & 4: a study score of at least 25 in English (EAL) or 20 in any other English; plus a study score of at least 20 in Mathematics (any).
<b>Pathway into this course from:</b> <b>Credits</b> Diploma of Information Technology (VDIT) 96 Certificate IV in Cyber Security (22603VIC) 24 Certificate IV in Information Technology (ICT40120) 24 Diploma of Clinical Coding (HLT50321) 0

**For more information on courses and TAFE admission requirements, visit the course pages on our website.** Information is correct at the time of publication. All higher education courses require completion of an Australian Senior Secondary Certificate (VCE or equivalent) unless students are entering via a pathway. Some courses may have additional entry requirements than listed here. Please check the website course pages for more details. Bachelor's Degrees are traditionally three years in duration. Honours will generally extend the duration of the course by 1–2 years. \*Please see course page for additional admissions requirements. \*\*Meeting the minimum requirement for entry to second year does not guarantee entry. Places are limited and applicants will be competitively ranked based on course Weighted Average Mark from the first two semesters of study. \*\*\*There may be a limit on how many students can access pathways to this course due to high demand. If you are eligible for a pathway but unsuccessful in securing a place, please contact VUHQ (Student Service Centre) on +61 3 9919 6100 for advice. \*Industry\* location: For selected programs, VU collaborates with organisations to provide training directly in the workplace. \*VDSS: Vocational Education and Training (VET) delivered to school students. CRICOS 00124K (Melbourne), 02475D (Sydney and Brisbane). RTO 3113. TEQSA PRV12152.

# 2026 Course Guide

Home

Welcome

VU Block Model®

No one sees you like VU

Your community, your VU

Here for your whole journey

Unlock your career journey

Health

Education

Law

Business

Sport

Cyber Security

TAFE

Skilled Trades

Uniquely VU

Our courses

Our campuses

VU Early Entry

How to apply

VU alumni

VU Open Day

Bachelor of Information Technology (Professional) NBIP	
<b>Duration:</b> 3.5 years. <b>Campus:</b> Footscray Park. <b>ATAR required:</b> Yes. <b>Other admission requirements:</b> Completion of an Australian Senior Secondary Certificate (VCE or equivalent) incl. Units 3 & 4: a study score of at least 25 in English (EAL) or 20 in any other English; plus a study score of at least 20 in Mathematics (any).	
<b>Pathway into this course from:</b>	<b>Credits</b>
Diploma of Information Technology (VDIT) **	96

Bachelor of Information Technology NBIT	
<b>Duration:</b> 3 years. <b>Campus:</b> Footscray Park. <b>Other admission requirements:</b> Completion of an Australian Senior Secondary Certificate (VCE or equivalent) incl. Units 3 & 4: a study score of at least 25 in English (EAL) or 20 in any other English; plus a study score of at least 20 in Mathematics (any).	
<b>Pathway into this course from:</b>	<b>Credits</b>
Diploma of Information Technology (VDIT)	96
Certificate IV in Cyber Security (22603VIC)	24
Certificate IV in Information Technology (ICT40120)24	

## Education

Inspire the next generation and prepare for diverse careers in teaching and education at VU. Learning practical skills to enter early childhood, primary, or secondary settings, you'll graduate ready for the classroom – and to empower future learners.

### TAFE courses

**Course in Safe Use of Machinery for Technology Teaching** 22623VIC

**Duration:** 4 days. **Campus:** Sunshine. **Other admission requirements:** This course is restricted to persons who meet one of the following requirements:

- Victorian Institute of Teaching (VIT) registered teachers providing student instruction in a technology teaching environment; or
- Pre-service teachers enrolled in a VIT-approved secondary teaching qualification with technology or art and design listed as a method; or
- Technology teaching support technicians (non-teaching) with previous trade experience or demonstrable experience in using the required equipment and that are currently employed by a secondary school/college.

**Certificate III in Early Childhood Education and Care** CHC30121

**Duration:** 1 year + up to 2 years Traineeship, 2 years VDSS. **Campus:** Footscray Nicholson, Werribee, St Albans, Industry.

**Certificate IV in School Based Education Support** CHC40221

**Duration:** 1 year. **Campus:** Footscray Nicholson, Werribee, Industry. **Other admission requirements:** Must be at least 18 years of age or over at the commencement of the course.

**Pathway from this course to:**

Diploma of Education Studies (EDES)	<b>Credits</b>
	0

**Diploma of Early Childhood Education and Care** CHC50121

**Duration:** 1 year + up to 2 years Traineeship. **Campus:** Footscray Nicholson, Werribee, Industry. **Other admission requirements:** Entry to this qualification is open to individuals who hold a:

- Certificate III in Early Childhood Education and Care (CHC30121); or
- Certificate III in Early Childhood Education and Care (CHC30113).

**Pathway from this course to:**

Bachelor of Early Childhood Education (EBEC)	<b>Credits</b>
	96
Bachelor of Early Childhood Education and Leadership (EBCL)	96

**Diploma of Teacher Education Preparation** 22602VIC

**Duration:** 1 year. **Campus:** Footscray Park.

**Pathway from this course to:**

Bachelor of Early Childhood Education and Leadership (EBCL)	<b>Credits</b>
	24
Bachelor of Early Childhood Education (EBEC)	24
Bachelor of Education Studies (EBST)	24
Bachelor of Education (P-12) (EBED)	0
Bachelor of Education (Primary) (EBPE)	0

### Higher Education courses

**Diploma of Education Studies** EDES

**Duration:** 1 year. **Campus:** Footscray Nicholson, Online. **Other admission requirements:** Completion of an Australian Senior Secondary Certificate (VCE or equivalent) incl. Units 3 & 4: a study score of at least 25 in English (EAL) or 20 in any other English.

**Pathway from this course to:**

Bachelor of Arts (ABAB)	<b>Credits</b>
	96
Bachelor of Early Childhood Education and Leadership (EBCL)	96
Bachelor of Early Childhood Education (EBEC)	96
Bachelor of Education (P-12) (EBED) */**	96
Bachelor of Education (Primary) (EBPE) */**	96
Bachelor of Education Studies (EBST)	96
<b>Pathway into this course from:</b>	<b>Credits</b>
Certificate IV in School Based Education Support (CHC40221)	0
Foundations at VU (JVAC)	0

### Postgraduate courses

**Graduate Certificate in Artificial Intelligence** NTAI

**Duration:** 0.5 years. **Campus:** City, Footscray Park.

**Graduate Certificate in Cyber Security** NTCS

**Duration:** 0.5 years. **Campus:** City, Footscray Park.

**Graduate Diploma in Cyber Security** NGCS

**Duration:** 1 year. **Campus:** City, Footscray Park.

**Master of Applied Information Technology** NMIT

**Duration:** 2 years. **Campus:** City, Footscray Park.

**Undergraduate Certificate in Early Childhood Education** EUCC

**Duration:** 0.5 years. **Campus:** Footscray Park. **Other admission requirements:** Completion of an Australian Senior Secondary Certificate (VCE or equivalent) incl. Units 3 & 4: a study score of at least 30 in English (EAL) or 25 in any other English.

**Undergraduate Certificate in Education (P12 STEM)** EUED

**Duration:** 0.5 years. **Campus:** Footscray Park, Online. **Other admission requirements:** Completion of an Australian Senior Secondary Certificate (VCE or equivalent) incl. Units 3 & 4: a study score of at least 30 in English (EAL) or 25 in any other English.

**Undergraduate Certificate in Education Studies** EUES

**Duration:** 0.5 years. **Campus:** Footscray Park. **Other admission requirements:** Completion of an Australian Senior Secondary Certificate (VCE or equivalent) incl. Units 3 & 4: a study score of at least 30 in English (EAL) or 25 in any other English.

**Bachelor of Early Childhood Education and Leadership** EBCL

**Duration:** 4 years. **Campus:** City, Footscray Nicholson, Online. **Other admission requirements:** Completion of an Australian Senior Secondary Certificate (VCE or equivalent) incl. Units 3 & 4: a study score of at least 30 in English (EAL) or 25 in any other English.

**Pathway into this course from:**

Diploma of Early Childhood Education and Care (CHC50121)	<b>Credits</b>
	96
Diploma of Education Studies (EDES)	96
Diploma of Teacher Education Preparation (22602VIC)	24

**Bachelor of Early Childhood Education** EBEC

**Duration:** 3 years. **Campus:** City, Footscray Nicholson, Online. **Other admission requirements:** Completion of an Australian Senior Secondary Certificate (VCE or equivalent) incl. Units 3 & 4: a study score of at least 30 in English (EAL) or 25 in any other English.

**Pathway into this course from:**

Diploma of Early Childhood Education and Care (CHC50121)	<b>Credits</b>
	96
Diploma of Education Studies (EDES)	96
Diploma of Teacher Education Preparation (22602VIC)	24

**Bachelor of Early Childhood Teaching** EBET

**Duration:** 3 years. **Campus:** St Albans.

**Bachelor of Education (P-12)** EBED

**Duration:** 4 years. **Campus:** Footscray Park. **ATAR required:** Yes. **Other admission requirements:** Completion of an Australian Senior Secondary Certificate (VCE or equivalent) with an ATAR of 70 or above (after adjustments) incl. Units 3 & 4: a study score of at least 30 in English (EAL) or 25 in any other English other than EAL; plus Units 1 & 2: satisfactory completion in two Units (any study combination) of Maths: General Mathematics, Maths: Mathematical Methods or Maths: Specialist Mathematics or Units 3 & 4: any Mathematics.

**Pathway into this course from:**

Diploma of Education Studies (EDES) */**	<b>Credits</b>
	96
Diploma of Teacher Education Preparation (22602VIC)	0

**Bachelor of Education (Primary)** EBPE

**Duration:** 4 years. **Campus:** Footscray Park. **ATAR required:** Yes. **Other admission requirements:** Completion of an Australian Senior Secondary Certificate (VCE or equivalent) with an ATAR of 70 or above (after adjustments) incl. Units 3 & 4: a study score of at least 30 in English (EAL) or 25 in any other English other than EAL; plus Units 1 & 2: satisfactory completion in two Units (any study combination) of Maths: General Mathematics, Maths: Mathematical Methods or Maths: Specialist Mathematics or Units 3 & 4: any Mathematics.

**Pathway into this course from:**

Diploma of Education Studies (EDES) */**	<b>Credits</b>
	96
Diploma of Teacher Education Preparation (22602VIC)	0

**Bachelor of Education Studies** EBST

**Duration:** 3 years. **Campus:** Footscray Park. **Other admission requirements:** Completion of an Australian Senior Secondary Certificate (VCE or equivalent) incl. Units 3 & 4: a study score of at least 30 in English (EAL) or 25 in any other English.

**Pathway into this course from:**

Diploma of Community Services (CHC52021)	<b>Credits</b>
	96
Diploma of Education Studies (EDES)	96
Diploma of Teacher Education Preparation (22602VIC)	24

**Bachelor of Outdoor Education and Environmental Science** SBOE

**Duration:** 3 years. **Campus:** Footscray Park. **Other admission requirements:** Completion of an Australian Senior Secondary Certificate (VCE or equivalent) incl. Units 3 & 4: a study score of at least 25 in English (EAL) or 20 in any other English.

**Pathway into this course from:**

Diploma of Remedial Massage (HLT52021)	<b>Credits</b>
	0

**Bachelor of Outdoor Leadership** SBOL

**Duration:** 3 years. **Campus:** Footscray Park. **Other admission requirements:** Completion of an Australian Senior Secondary Certificate (VCE or equivalent) incl. Units 3 & 4: a study score of at least 25 in English (EAL) or 20 in any other English.

**Pathway into this course from:**

Foundations at VU (JVAC)	<b>Credits</b>
	0

**Bachelor of Science/Master of Teaching (Secondary Education)** ECST

**Duration:** 5 years. **Campus:** Footscray Park. **Other admission requirements:** Completion of an Australian Senior Secondary Certificate (VCE or equivalent) incl. Units 3 & 4: a study score of at least 25 in English (EAL) or 20 in any other English; plus a study score of at least 20 in Mathematics (any).

### Postgraduate courses

**Graduate Certificate in Block Teaching** ETBL

**Duration:** 0.5 years. **Campus:** Footscray Park, Online.

**Graduate Certificate in Early Childhood Education** ETEC

**Duration:** 0.5 years. **Campus:** City, Online. **Pathway from this course to:**

Master of Education (EMED)	<b>Credits</b>
	48

**Graduate Certificate in Education** ETED

**Duration:** 0.5 years. **Campus:** Footscray Park.

**Graduate Diploma in Block Teaching** EGBL

**Duration:** 1 year. **Campus:** Footscray Park, Online.

**Graduate Diploma in Early Childhood Education** EGEC

**Duration:** 1 year. **Campus:** City, Online. **Pathway from this course to:**

Master of Education (EMED)	<b>Credits</b>
	96

**Graduate Diploma in Education** EGED

**Duration:** 1 year. **Campus:** Footscray Park.

**Master of Applied Teaching (Secondary Education)** EMAT

**Duration:** 1.5 years. **Campus:** Online. **Other admission requirements:** To be eligible applicants must be an Australian citizen or permanent resident from an Indigenous Australian, culturally and linguistically diverse (CALD) or African Australian background. All applicants are required to respond to questions on the A141 form outlining why they are interested in undertaking this course as well as providing a written response about which of the eligible identity categories they belong to: Indigenous Australian, CALD or African Australian. If applicants are eligible, their undergraduate and relevant post-graduate degrees are assessed to ensure they have at least one specialisation area which they are able to teach. They are then offered an ANAA interview prior to admission to assess their suitability for the intense and competitive program. This is regardless of whether they have completed a CASPer test or not.

**Master of Education** EMED

**Duration:** 2 years. **Campus:** Footscray Park. **Pathway into this course from:**

Graduate Diploma in Early Childhood Education (EGEC)	<b>Credits</b>
	96
Graduate Certificate in Early Childhood Education (ETEC)	48

**Master of Teaching (Primary Education)** EMPE

**Duration:** 2 years. **Campus:** Footscray Nicholson, Online. **Other admission requirements:** All students need to pass a CASPer test or VU ANAA interview prior to admission. All students need a 3.5 GPA average for entry into the course.

**Master of Teaching (Secondary Education)** EMES

**Duration:** 2 years. **Campus:** City, Online. **Other admission requirements:** All students need to pass a CASPer test or VU ANAA interview prior to admission. All students need a 3.5 GPA average for entry into the course.

Example Pathway	START	Certificate III in Early Childhood Education and Care (CHC30121)	1 year
	+	Diploma of Early Childhood Education and Care (CHC50121)	1 year
	+	Bachelor of Early Childhood Education (EBEC)	2 years

Example Pathway	START	Certificate IV in School Based Education Support (CHC40221)	1 year
	+	Diploma of Education Studies (EDES)	1 year
	+	Bachelor of Education (P-12) (EBED) */**	2 years

**For more information on courses and TAFE admission requirements, visit the course pages on our website.** Information is correct at the time of publication. All higher education courses require completion of an Australian Senior Secondary Certificate (VCE or equivalent) unless students are entering via a pathway. Some courses may have additional entry requirements than listed here. Please check the website course pages for more details. Bachelor's Degrees are traditionally three years in duration. Honours will generally extend the duration of the course by 1–2 years. \*Please see course page for additional admissions requirements. \*\*Meeting the minimum requirement for entry to second year does not guarantee entry. Places are limited and applicants will be competitively ranked based on course Weighted Average Mark from the first two semesters of study. \*\*\*There may be a limit on how many students can access pathways to this course due to high demand. If you are eligible for a pathway but unsuccessful in securing a place, please contact VUHQ (Student Service Centre) on +61 3 9919 6100 for advice. 'Industry' location: For selected programs, VU collaborates with organisations to provide training directly in the workplace. 'VDSS': Vocational Education and Training (VET) delivered to school students. CRICOS 00124K (Melbourne), 02475D (Sydney and Brisbane). RTO 3113. TEQSA PRV12152.



# 2026 Course Guide

Home

Welcome

VU Block Model®

No one sees you like VU

Your community, your VU

Here for your whole journey

Unlock your career journey

Health

Education

Law

Business

Sport

Cyber Security

TAFE

Skilled Trades

Uniquely VU

Our courses

Our campuses

VU Early Entry

How to apply

VU alumni

VU Open Day

## Engineering & Built Environment

Design the future with VU’s engineering & built environment courses. Gaining skills in construction, surveying and design, you’ll graduate prepared for careers from project management through to design – and ready to shape cities and industries.

### TAFE courses

<b>Diploma of Building and Construction (Building) CPC50220</b>	
<b>Duration:</b> 2 years. <b>Campus:</b> Sunshine.	
<b>Pathway from this course to:</b>	<b>Credits</b>
Bachelor of Construction Management (Honours) (NHCM)	144
Bachelor of Architectural Design (NBAD)	96
Bachelor of Building Surveying (NBBS)	96

<b>Advanced Diploma of Building Design (Architectural) 22627VIC</b>	
<b>Duration:</b> 2 years. <b>Campus:</b> Sunshine.	
<b>Pathway from this course to:</b>	<b>Credits</b>
Bachelor of Architectural Design (NBAD)	144
Bachelor of Construction Management (Honours) (NHCM)	120
Bachelor of Building Surveying (NBBS)	96

<b>Advanced Diploma of Building Surveying CPC60121</b>	
<b>Duration:</b> 2 years. <b>Campus:</b> Sunshine.	
<b>Pathway from this course to:</b>	<b>Credits</b>
Bachelor of Building Surveying (NBBS)	96
Bachelor of Architectural Design (NBAD)	96
Bachelor of Construction Management (Honours) (NHCM)	96

### Higher Education courses

<b>Undergraduate Certificate in Architectural Design NUAD</b>	
<b>Duration:</b> 0.5 years. <b>Campus:</b> Footscray Park.	
<b>Other admission requirements:</b> Completion of an Australian Senior Secondary Certificate (VCE or equivalent) incl. Units 3 & 4: a study score of at least 25 in English (EAL) or 20 in any other English.	

<b>Undergraduate Certificate in Building Construction Management NUBC</b>	
<b>Duration:</b> 0.5 years. <b>Campus:</b> Footscray Park.	
<b>Other admission requirements:</b> Completion of an Australian Senior Secondary Certificate (VCE or equivalent) incl. Units 3 & 4: a study score of at least 25 in English (EAL) or 20 in any other English.	

<b>Undergraduate Certificate in Engineering Fundamentals NUEF</b>	
<b>Duration:</b> 0.5 years. <b>Campus:</b> Footscray Park.	
<b>Other admission requirements:</b> Completion of an Australian Senior Secondary Certificate (VCE or equivalent) incl. Units 3 & 4: a study score of at least 25 in English (EAL) or 20 in any other English; <b>plus</b> Units 3 & 4 with a study score of 20 in Mathematics (any).	

<b>Bachelor of Architectural Design NBAD</b>	
<b>Duration:</b> 3 years. <b>Campus:</b> Footscray Park.	
<b>Other admission requirements:</b> Completion of an Australian Senior Secondary Certificate (VCE or equivalent) incl. Units 3 & 4: a study score of at least 25 in English (EAL) or 20 in any other English; <b>plus</b> any Maths Units 1 & 2 except Foundation Maths or Foundation Maths Unit 3 or 4 with a study score of 20.	
<b>Pathway into this course from:</b>	<b>Credits</b>
Advanced Diploma of Building Design (Architectural) (22627VIC)	144
Advanced Diploma of Building Surveying (CPC60121)	96
Diploma of Building and Construction (Building) (CPC50220)	96
Foundations at VU (JYAC)	0

<b>Bachelor of Building Surveying NBBS</b>	
<b>Duration:</b> 3 years. <b>Campus:</b> Online.	
<b>Other admission requirements:</b> Completion of an Australian Senior Secondary Certificate (VCE or equivalent) incl. Units 3 & 4: a study score of at least 25 in English (EAL) or 20 in any other English.	
<b>Pathway into this course from:</b>	<b>Credits</b>
Advanced Diploma of Building Design (Architectural) (22627VIC)	96
Advanced Diploma of Building Surveying (CPC60121)	96
Diploma of Building and Construction (Building) (CPC50220)	96
Foundations at VU (JYAC)	0

<b>Bachelor of Construction Management (Honours) NHCM</b>	
<b>Duration:</b> 4 years. <b>Campus:</b> Footscray Park.	
<b>Other admission requirements:</b> Completion of an Australian Senior Secondary Certificate (VCE or equivalent) incl. Units 3 & 4: a study score of at least 25 in English (EAL) or 20 in any other English.	
<b>Pathway into this course from:</b>	<b>Credits</b>
Advanced Diploma of Building Design (Architectural) (22627VIC)	96
Advanced Diploma of Building Surveying (CPC60121)	96
Diploma of Building and Construction (Building) (CPC50220)	96
Foundations at VU (JYAC)	0

<b>Bachelor of Engineering (Honours) (Civil Engineering) NHEC</b>	
<b>Duration:</b> 4 years. <b>Campus:</b> Footscray Park.	
<b>Other admission requirements:</b> Completion of an Australian Senior Secondary Certificate (VCE or equivalent) incl. Units 3 & 4: a study score of at least 25 in English (EAL) or 20 in any other English.	
<b>Pathway into this course from:</b>	<b>Credits</b>
Diploma of Building and Construction (Building) (CPC50220)	144
Advanced Diploma of Building Design (Architectural) (22627VIC)	120
Advanced Diploma of Building Surveying (CPC60121)	96
Foundations at VU (JYAC)	0

<b>Bachelor of Engineering (Honours) (Electrical and Electronic Engineering) NHEE</b>	
<b>Duration:</b> 4 years. <b>Campus:</b> Footscray Park.	
<b>Other admission requirements:</b> Completion of an Australian Senior Secondary Certificate (VCE or equivalent) incl. Units 3 & 4: a study score of at least 25 in English (EAL) or 20 in any other English; <b>plus</b> Units 3 & 4 with a study score of 20 in Mathematics (any).	
<b>Pathway into this course from:</b>	<b>Credits</b>
Diploma of Building and Construction (Building) (CPC50220)	144
Advanced Diploma of Building Design (Architectural) (22627VIC)	120
Advanced Diploma of Building Surveying (CPC60121)	96
Foundations at VU (JYAC)	0

<b>Bachelor of Engineering (Honours) (Mechanical Engineering) NHEM</b>	
<b>Duration:</b> 4 years. <b>Campus:</b> Footscray Park.	
<b>Other admission requirements:</b> Completion of an Australian Senior Secondary Certificate (VCE or equivalent) incl. Units 3 & 4: a study score of at least 25 in English (EAL) or 20 in any other English; <b>plus</b> Units 3 & 4 with a study score of 20 in Mathematics (any).	
<b>Pathway into this course from:</b>	<b>Credits</b>
Diploma of Building and Construction (Building) (CPC50220)	144
Advanced Diploma of Building Design (Architectural) (22627VIC)	120
Advanced Diploma of Building Surveying (CPC60121)	96
Foundations at VU (JYAC)	0

<b>Bachelor of Engineering (Honours) (Mechanical Engineering) NHEM</b>	
<b>Duration:</b> 4 years. <b>Campus:</b> Footscray Park.	
<b>Other admission requirements:</b> Completion of an Australian Senior Secondary Certificate (VCE or equivalent) incl. Units 3 & 4: a study score of at least 25 in English (EAL) or 20 in any other English; <b>plus</b> Units 3 & 4 with a study score of 20 in Mathematics (any).	
<b>Pathway into this course from:</b>	<b>Credits</b>
Certificate IV in Industrial Automation and Control (UEE43220)	0
Foundations at VU (JYAC)	0

<b>Graduate Certificate in Building Surveying NTBS</b>	
<b>Duration:</b> 0.5 years. <b>Campus:</b> Online.	

<b>Graduate Certificate in Construction Management NTCM</b>	
<b>Duration:</b> 0.5 years. <b>Campus:</b> Footscray Park.	

<b>Graduate Certificate in Construction Project Management NTCP</b>	
<b>Duration:</b> 0.5 years. <b>Campus:</b> Footscray Park.	

<b>Graduate Certificate in Digital Construction Management NTDC</b>	
<b>Duration:</b> 1 year. <b>Campus:</b> Footscray Park.	

<b>Graduate Certificate in Information Technology Project Management NTIP</b>	
<b>Duration:</b> 0.5 years. <b>Campus:</b> Footscray Park, Sydney.	

<b>Graduate Certificate in Performance-Based Building &amp; Fire Codes ETQB</b>	
<b>Duration:</b> 1 year. <b>Campus:</b> Online.	
<b>Other admission requirements:</b> A letter of recommendation and an interview may be required.	

<b>Graduate Certificate in Project Management NTPM</b>	
<b>Duration:</b> 0.5 years. <b>Campus:</b> Footscray Park.	

<b>Graduate Certificate in Sustainable Construction Management NTSC</b>	
<b>Duration:</b> 1 year. <b>Campus:</b> Footscray Park.	

<b>Graduate Diploma in Building Surveying NGBS</b>	
<b>Duration:</b> 1 year. <b>Campus:</b> Online.	

<b>Graduate Diploma in Construction Management NGCM</b>	
<b>Duration:</b> 1 year. <b>Campus:</b> Footscray Park.	

<b>Graduate Diploma in Project Management NGPM</b>	
<b>Duration:</b> 1 year. <b>Campus:</b> Footscray Park.	

<b>Master of Construction Management NMCM</b>	
<b>Duration:</b> 2 years. <b>Campus:</b> Footscray Park.	

<b>Master of Engineering NMEN</b>	
<b>Duration:</b> 2 years. <b>Campus:</b> Footscray Park.	
<b>Other admission requirements:</b> Applicants with an engineering degree outside the specialisations listed and with five years of work experience in a relevant discipline will be eligible to submit an application for this course.	

## English Language Programs

Build confidence in communication with VU’s English language courses. Improve skills for study, work, or daily life through supportive teaching and flexible courses, preparing you for further education, employment, and meaningful connections.

### TAFE courses

<b>Course in Initial EAL 22636VIC</b>	
<b>Duration:</b> 0.5 years. <b>Campus:</b> Sunshine, Footscray Nicholson, Werribee, St Albans.	

<b>Course in EAL 22637VIC</b>	
<b>Duration:</b> 0.5 years. <b>Campus:</b> Sunshine, Footscray Nicholson, Werribee, St Albans.	

<b>Certificate I in EAL (Access) 22638VIC</b>	
<b>Duration:</b> 0.5 years. <b>Campus:</b> Sunshine, Footscray Nicholson, Werribee, St Albans.	

<b>Certificate II in EAL (Access) 22639VIC</b>	
<b>Duration:</b> 0.5 years. <b>Campus:</b> Sunshine, Footscray Nicholson, Werribee, St Albans.	

<b>Certificate III in EAL (Access) 22640VIC</b>	
<b>Duration:</b> 0.5 years. <b>Campus:</b> Sunshine, Footscray Nicholson, Werribee, St Albans.	

<b>Certificate IV in EAL (Access) 22641VIC</b>	
<b>Duration:</b> 0.5 years. <b>Campus:</b> Sunshine, Footscray Nicholson, Werribee, St Albans.	

<b>Certificate II in EAL (Employment) 22642VIC</b>	
<b>Duration:</b> 0.5 years. <b>Campus:</b> Sunshine, Footscray Nicholson, Werribee, St Albans.	

<b>Certificate III in EAL (Employment) 22643VIC</b>	
<b>Duration:</b> 0.5 years. <b>Campus:</b> Sunshine, Footscray Nicholson, Werribee, St Albans.	

<b>Certificate III in EAL (Further Study) 22645VIC</b>	
<b>Duration:</b> 0.5 years. <b>Campus:</b> Sunshine, Footscray Nicholson, Werribee, St Albans.	

<b>Certificate IV in EAL (Further Study) 22646VIC</b>	
<b>Duration:</b> 0.5 years. <b>Campus:</b> Sunshine, Footscray Nicholson, Werribee, St Albans.	

<b>Certificate I in General Education for Adults (Introductory) 22476VIC</b>	
<b>Duration:</b> 0.5 years. <b>Campus:</b> Sunshine, Footscray Nicholson, Werribee, St Albans.	

<b>Certificate I in General Education for Adults 22472VIC</b>	
<b>Duration:</b> 0.5 years. <b>Campus:</b> Sunshine, Footscray Nicholson, Werribee, St Albans.	

<b>Certificate II in General Education for Adults 22473VIC</b>	
<b>Duration:</b> 0.5 years. <b>Campus:</b> Sunshine, Footscray Nicholson, Online, Werribee, St Albans.	

<b>Certificate III in General Education for Adults 22474VIC</b>	
<b>Duration:</b> 0.5 years. <b>Campus:</b> Sunshine, Footscray Nicholson, Werribee, St Albans.	

<b>Certificate III in Beauty Services SHB30121</b>	
<b>Duration:</b> 0.5 years + 2 years VDSS. <b>Campus:</b> City.	

<b>Certificate III in Hairdressing SHB30416</b>	
<b>Duration:</b> 1 year + 3 years Apprenticeship. <b>Campus:</b> City, Industry.	

<b>Diploma of Beauty Therapy SHB50121</b>	
<b>Duration:</b> 1 year. <b>Campus:</b> City.	
<b>Pathway from this course to:</b>	<b>Credits</b>
Bachelor of Dermal Sciences (HBDS) ***	96

<b>Certificate III in Individual Support CHC33021</b>	
<b>Duration:</b> 0.5 years + 2 years Traineeship. <b>Campus:</b> Sunshine, Footscray Nicholson, Werribee, Industry.	

<b>Certificate III in Non-Emergency Patient Transport HLT31120</b>	
<b>Duration:</b> 0.5 years. <b>Campus:</b> Sunshine, Werribee.	
<b>Other admission requirements:</b> Applicants must be at least 18 years old and hold a driver’s licence (probationary licence accepted) at the time of commencement in the course.	
<b>Pathway from this course to:</b>	<b>Credits</b>
Diploma of Emergency Health Care (HLT50120)	0

<b>Certificate IV in Ageing Support CHC43015</b>	
<b>Duration:</b> 1 year. <b>Campus:</b> Sunshine, Footscray Nicholson, Werribee, Industry.	

<b>Certificate IV in Allied Health Assistance HLT43021</b>	
<b>Duration:</b> 1 year. <b>Campus:</b> Sunshine, Werribee.	

<b>Certificate III in Beauty Services SHB30121</b>	
<b>Duration:</b> 0.5 years + 2 years VDSS. <b>Campus:</b> City.	

<b>Certificate III in Hairdressing SHB30416</b>	
<b>Duration:</b> 1 year + 3 years Apprenticeship. <b>Campus:</b> City, Industry.	

<b>Diploma of Beauty Therapy SHB50121</b>	
<b>Duration:</b> 1 year. <b>Campus:</b> City.	
<b>Pathway from this course to:</b>	<b>Credits</b>
Bachelor of Dermal Sciences (HBDS) ***	96

<b>Certificate III in Individual Support CHC33021</b>	
<b>Duration:</b> 0.5 years + 2 years Traineeship. <b>Campus:</b> Sunshine, Footscray Nicholson, Werribee, Industry.	

<b>Certificate III in Non-Emergency Patient Transport HLT31120</b>	
<b>Duration:</b> 0.5 years. <b>Campus:</b> Sunshine, Werribee.	
<b>Other admission requirements:</b> Applicants must be at least 18 years old and hold a driver’s licence (probationary licence accepted) at the time of commencement in the course.	
<b>Pathway from this course to:</b>	<b>Credits</b>
Diploma of Emergency Health Care (HLT50120)	0

<b>Certificate IV in Ageing Support CHC43015</b>	
<b>Duration:</b> 1 year. <b>Campus:</b> Sunshine, Footscray Nicholson, Werribee, Industry.	

<b>Certificate IV in Allied Health Assistance HLT43021</b>	
<b>Duration:</b> 1 year. <b>Campus:</b> Sunshine, Werribee.	

## Want to study 100% online?

Check out our online, flexible postgraduate courses in business, education and health

<b>Certificate IV in Disability Support CHC43121</b>	
<b>Duration:</b> 1 year. <b>Campus:</b> Footscray Nicholson, City.	
<b>Other admission requirements:</b> Entry to the Certificate IV in Disability Support (CHC43121) requires successful completion of ONE of the following:	
<ul style="list-style-type: none"> <li>Certificate III in Individual Support (Disability) (CHC33021)</li> <li>Certificate III in Individual Support (Disability) (CHC33015)</li> <li>Certificate III in Disability (CHC30408) and the unit Entry to Certificate IV in Disability Support Skill Set (CHCSS00125).</li> </ul>	

<b>Diploma of Clinical Coding HLT50321</b>	
<b>Duration:</b> 1 year. <b>Campus:</b> Online.	
<b>Pathway from this course to:</b>	<b>Credits</b>
Bachelor of Health Science (HBHL)	0
Bachelor of Data Science (NBDS)	0
<b>Pathway into this course from:</b>	<b>Credits</b>
Certificate III in Individual Support (CHC33021)	0

For more information on courses and TAFE admission requirements, visit the course pages on our website. Information is correct at the time of publication. All higher education courses require completion of an Australian Senior Secondary Certificate (VCE or equivalent) unless students are entering via a pathway. Some courses may have additional entry requirements than listed here. Please check the website course pages for more details. Bachelor’s Degrees are traditionally three years in duration. Honours will generally extend the duration of the course by 1–2 years. \*Please see course page for additional admissions requirements. \*\*Meeting the minimum requirement for entry to second year does not guarantee entry. Places are limited and applicants will be competitively ranked based on course Weighted Average Mark from the first two semesters of study. \*\*\*There may be a limit on how many students can access pathways to this course due to high demand. If you are eligible for a pathway but unsuccessful in securing a place, please contact VUHQ (Student Service Centre) on +61 3 9919 6100 for advice. \*Industry\* location: For selected programs, VU collaborates with organisations to provide training directly in the workplace. \*VDSS: Vocational Education and Training (VET) delivered to school students. CRICOS 00124K (Melbourne), 02475D (Sydney and Brisbane). RTO 3113. TEQSA PRV12152.

# 2026 Course Guide

Home

Welcome

VU Block Model®

No one sees you like VU

Your community, your VU

Here for your whole journey

Unlock your career journey

Health

Education

Law

Business

Sport

Cyber Security

TAFE

Skilled Trades

Uniquely VU

Our courses

Our campuses

VU Early Entry

How to apply

VU alumni

VU Open Day

<b>Diploma of Emergency Health Care</b> HLT51020
<b>Duration:</b> 7 months. <b>Campus:</b> Sunshine. <b>Other admission requirements:</b> Applicants must have completed Certificate III in Non-Emergency Patient Transport (HLT31120) prior to admission. If obtained outside of Victoria University you must submit a certified copy of both the Award and Academic Transcript with your application.
<b>Pathway from this course to:</b> <b>Credits</b>
Bachelor of Paramedicine (HBPD) *** 96

<b>Diploma of Nursing</b> HLT54121
<b>Duration:</b> 2 years. <b>Campus:</b> Sunshine, Werribee, St Albans. <b>Other admission requirements:</b> All applicants must be aged 18 years of age or over at time of course commencement. In addition to the above requirements, applicants must also be able to demonstrate that they meet the requirements of the Nursing and Midwifery Board of Australia's (NMBA) English language skills registration standard. For detailed admission requirements, visit the course pages on our website.
<b>Pathway from this course to:</b> <b>Credits</b>
Bachelor of Nursing (HBNB) *** 96

## Higher Education courses

<b>Undergraduate Certificate in Laser Safety</b> HULS
<b>Duration:</b> 0.5 years. <b>Campus:</b> City. <b>Other admission requirements:</b> Not applicable.

<b>Bachelor of Dermal Sciences</b> HBDS
<b>Duration:</b> 4 years. <b>Campus:</b> City. <b>Other admission requirements:</b> Completion of an Australian Senior Secondary Certificate (VCE or equivalent) incl. Units 3 & 4: a study score of at least 25 in English (EAL) or 20 in any other English.
<b>Pathway into this course from:</b> <b>Credits</b>
Diploma of Beauty Therapy (SHB50121) *** 96 Foundations at VU (JVAC) *** 0

<b>Bachelor of Health Science</b> HBHL
<b>Duration:</b> 3 years. <b>Campus:</b> St Albans. <b>Other admission requirements:</b> Completion of an Australian Senior Secondary Certificate (VCE or equivalent) incl. Units 3 & 4: a study score of at least 25 in English (EAL) or 20 in any other English.
<b>Pathway into this course from:</b> <b>Credits</b>
Diploma of Clinical Coding (HLT50321) 0 Foundations at VU (JVAC) 0

<b>Bachelor of Midwifery/ Bachelor of Nursing</b> HBMA
<b>Duration:</b> 4 years. <b>Campus:</b> St Albans, Sunshine. <b>ATAR required:</b> Yes. <b>Other admission requirements:</b> Completion of an Australian Senior Secondary Certificate (VCE or equivalent); <b>plus</b> Units 3 & 4: a study score of at least 30 in English (EAL) or 25 in any other English other than EAL; <b>plus</b> Units 3 & 4: a study score of at least 20 in one of Biology, Chemistry, Health and Human Development, any Mathematics or Psychology. Please <b>also</b> refer to <b>additional section on website</b> regarding English language skills registration standard for domestic students.

<b>Bachelor of Nursing</b> HBNB
<b>Duration:</b> 3 years. <b>Campus:</b> St Albans. <b>ATAR required:</b> Yes. <b>Other admission requirements:</b> Completion of an Australian Senior Secondary Certificate (VCE or equivalent) incl. Units 3 & 4: a study score of at least 30 in English (EAL) or 25 in any other English; and Units 3 & 4: a study score of at least 20 in one of Biology, Chemistry, Health and Human Development, any Mathematics or Psychology. Please <b>also</b> refer to <b>additional section on website</b> regarding English language skills registration standard for domestic students.
<b>Pathway into this course from:</b> <b>Credits</b>
Diploma of Nursing (HLT54121) *** 96

<b>Bachelor of Paramedicine</b> HBPD
<b>Duration:</b> 3 years. <b>Campus:</b> St Albans. <b>ATAR required:</b> Yes. <b>Other admission requirements:</b> Completion of an Australian Senior Secondary Certificate (VCE or equivalent) incl. Units 3 & 4: a study score of at least 25 in English (EAL) or 20 in any other English.
<b>Pathway into this course from:</b> <b>Credits</b>
Diploma of Emergency Health Care (HLT51020) *** 96

<b>Bachelor of Speech and Language Sciences/Master of Speech Pathology</b> HCSP
<b>Duration:</b> 4.5 years. <b>Campus:</b> Footscray Park. <b>ATAR required:</b> Yes. <b>Other admission requirements:</b> Completion of an Australian Senior Secondary Certificate (VCE or equivalent) incl. Units 3 & 4: a study score of at least 30 in English (EAL) or at least 25 in any other English; <b>plus</b> a study score of at least 20 in two of Biology, Chemistry, Physics, Mathematics (any), Psychology, Sociology, Texts and Traditions, Health and Human Development, or LOTE (any).

## Postgraduate courses

<b>Graduate Certificate in Epidemiology</b> HTEP
<b>Duration:</b> 8 months. <b>Campus:</b> Online.

<b>Graduate Certificate in Global Health Leadership</b> HTGL
<b>Duration:</b> 8 months. <b>Campus:</b> Online.

<b>Graduate Certificate in Global Public Health</b> HTGP
<b>Duration:</b> 0.5 years. <b>Campus:</b> City.

<b>Graduate Certificate in Health Economics</b> HTEH
<b>Duration:</b> 8 months. <b>Campus:</b> Online.

<b>Graduate Certificate in Health Promotion</b> HTHP
<b>Duration:</b> 8 months. <b>Campus:</b> Online.

<b>Graduate Certificate in Mental Health Nursing</b> HTMN
<b>Duration:</b> 8 months. <b>Campus:</b> Online.

<b>Graduate Certificate in Nursing</b> HTNG
<b>Duration:</b> 8 months. <b>Campus:</b> Online.

<b>Graduate Certificate in Nursing Informatics Leadership</b> HTNI
<b>Duration:</b> 8 months. <b>Campus:</b> Online.

<b>Graduate Certificate in Public Health</b> HTPT
<b>Duration:</b> 8 months. <b>Campus:</b> Online.

<b>Graduate Certificate in Sexual Health Promotion and Education</b> HTSH
<b>Duration:</b> 8 months. <b>Campus:</b> Online.

<b>Graduate Diploma in Mental Health Nursing</b> HGMN
<b>Duration:</b> 16 months. <b>Campus:</b> Online.

<b>Master of Global Public Health</b> HMGP
<b>Duration:</b> 2 years. <b>Campus:</b> City. <b>Pathway into this course from:</b> <b>Credits</b>
Bachelor of Health Science (HBHL) 48

<b>Master of Mental Health Nursing</b> HMMN
<b>Duration:</b> 2 years. <b>Campus:</b> Online.

<b>Master of Nursing</b> HMNG
<b>Duration:</b> 2 years. <b>Campus:</b> Online.

<b>Master of Public Health</b> HMPT
<b>Duration:</b> 2 years. <b>Campus:</b> Online.

<b>Master of Speech Pathology</b> HMST
<b>Duration:</b> 2 years. <b>Campus:</b> Footscray Park.

<b>Example Pathway</b> 	<b>START</b> Certificate III in Non-Emergency Patient Transport (HLT31120)	6 months
	<b>+</b> Diploma of Emergency Health Care (HLT51020)	7 months
	<b>+</b> Bachelor of Paramedicine (HBPD) ***	1 year credit applied 2 years
		<b>Total: 3 years</b>

**For more information on courses and TAFE admission requirements, visit the course pages on our website.** Information is correct at the time of publication. All higher education courses require completion of an Australian Senior Secondary Certificate (VCE or equivalent) unless students are entering via a pathway. Some courses may have additional entry requirements than listed here. Please check the website course pages for more details. Bachelor's Degrees are traditionally three years in duration. Honours will generally extend the duration of the course by 1-2 years. \*Please see course page for additional admissions requirements. \*\*Meeting the minimum requirement for entry to second year does not guarantee entry. Places are limited and applicants will be competitively ranked based on course Weighted Average Mark from the first two semesters of study. \*\*\*There may be a limit on how many students can access pathways to this course due to high demand. If you are eligible for a pathway but unsuccessful in securing a place, please contact VUHQ (Student Service Centre) on +61 3 9919 6100 for advice. 'Industry' location: For selected programs, VU collaborates with organisations to provide training directly in the workplace. 'VDSS': Vocational Education and Training (VET) delivered to school students. CRICOS 00124K (Melbourne), 02475D (Sydney and Brisbane). RTO 3113. TEQSA PRV12152.

# Hospitality, Tourism & Events

Bring your love for food and travel to life at VU. Our courses in hospitality, tourism and events will see you train in industry standard kitchens, refine culinary techniques, and develop leadership skills for diverse careers in global industries.

## TAFE courses

<b>Certificate II in Cookery</b> SIT20421
<b>Duration:</b> 2 years (VDSS). <b>Campus:</b> Footscray Nicholson.

<b>Certificate II in Hospitality</b> SIT20322
<b>Duration:</b> 2 years (VDSS). <b>Campus:</b> Footscray Nicholson.

<b>Certificate III in Commercial Cookery</b> SIT30821
<b>Duration:</b> 1 year + 3 years Apprenticeship. <b>Campus:</b> Footscray Nicholson.

<b>Certificate III in Hospitality</b> SIT30622
<b>Duration:</b> 0.5 years + 2 years Traineeship. <b>Campus:</b> Footscray Nicholson.

<b>Certificate III in Patisserie</b> SIT31021
<b>Duration:</b> 1 year + 2 years Traineeship. <b>Campus:</b> Footscray Nicholson.

<b>Certificate IV in Kitchen Management</b> SIT40521
<b>Duration:</b> 1.5 years. <b>Campus:</b> Footscray Nicholson, Industry.

<b>Diploma of Travel and Tourism Management</b> SIT50122
<b>Duration:</b> 1 year. <b>Campus:</b> Footscray Nicholson, Werribee.
<b>Pathway from this course to:</b> <b>Credits</b>
Bachelor of Business (BBNS) 96

<b>Diploma of Event Management</b> SIT50322
<b>Duration:</b> 1 year. <b>Campus:</b> Footscray Nicholson.
<b>Pathway from this course to:</b> <b>Credits</b>
Bachelor of Business (BBNS) 96

<b>Diploma of Hospitality Management</b> SIT50422
<b>Duration:</b> 1 year. <b>Campus:</b> Footscray Nicholson.
<b>Pathway from this course to:</b> <b>Credits</b>
Bachelor of Business (BBNS) 96 Associate Degree in Hospitality and Hotel Management (VAHH) 96

<b>Advanced Diploma of Hospitality Management</b> SIT60322
<b>Duration:</b> 1.5 years. <b>Campus:</b> Footscray Nicholson.
<b>Pathway from this course to:</b> <b>Credits</b>
Bachelor of Business (BBNS) 144 Associate Degree in Hospitality and Hotel Management (VAHH) 144

<b>Advanced Diploma of Hospitality Management</b> SIT60322
<b>Duration:</b> 1.5 years. <b>Campus:</b> Footscray Nicholson.
<b>Pathway from this course to:</b> <b>Credits</b>
Bachelor of Business (BBNS) 144 Associate Degree in Hospitality and Hotel Management (VAHH) 144

## Higher Education courses

<b>Master of Tourism Hospitality and Events Management</b> BMTE
<b>Duration:</b> 2 years. <b>Campus:</b> City.

## Higher Education courses

<b>Bachelor of Laws</b> BLAW
<b>Duration:</b> 4 years. <b>Campus:</b> City. <b>ATAR required:</b> Yes. <b>Other admission requirements:</b> Completion of an Australian Senior Secondary Certificate (VCE or equivalent) incl. Units 3 & 4: a study score of at least 30 in English (EAL) or 25 in any other English; <b>plus</b> Units 3 & 4: a study score of at least 20 in one of Economics, any History, Legal Studies, Australian Politics, Global Politics or Psychology.
<b>Pathway into this course from:</b> <b>Credits</b>
Advanced Diploma of Legal Practice (22565VIC) 72 Graduate Diploma in Migration Law (LGML) 60

<b>Bachelor of Laws (Graduate Entry)</b> BLGE
<b>Duration:</b> 3 years. <b>Campus:</b> City. <b>Other admission requirements:</b> Previous HE study: Completion of an Australian Bachelor degree (or equivalent). <b>Admission requirements (international):</b> Completion of an Australian Bachelor degree (or equivalent); <b>plus</b> IELTS (or equivalent): Overall score of 6.5 (with no band less than 6.0 in Listening, Reading, Writing and Speaking).
<b>Pathway into this course from:</b> <b>Credits</b>
Graduate Diploma in Migration Law (LGML) 72

## Higher Education courses

<b>Associate Degree in Hospitality and Hotel Management</b> VAHH
<b>Duration:</b> 2 years. <b>Campus:</b> Footscray Nicholson. <b>Other admission requirements:</b> Completion of an Australian Senior Secondary Certificate (VCE or equivalent) incl. Units 3 & 4: a study score of at least 25 in English (EAL) or 20 in any other English.
<b>Pathway from this course to:</b> <b>Credits</b>
Bachelor of Business (BBNS) 192
<b>Pathway to this course from:</b> <b>Credits</b>
Advanced Diploma of Hospitality Management (SIT60322) 144 Diploma of Hospitality Management (SIT50422) 96

<b>Bachelor of Business</b> BBNS
<b>Duration:</b> 3 years. <b>Campus:</b> City, Online. <b>Other admission requirements:</b> Completion of an Australian Senior Secondary Certificate (VCE or equivalent) incl. Units 3 & 4: a study score of at least 25 in English (EAL) or 20 in any other English.
<b>Pathway into this course from:</b> <b>Credits</b>
Associate Degree in Hospitality and Hotel Management (VAHH) 192 Advanced Diploma of Hospitality Management (SIT60322) 144 Diploma of Accounting (FNS50222) 96 Diploma of Business (Enterprise) (VDBE) 96 Diploma of Project Management (BSB50820) 96 Diploma of Event Management (SIT50322) 96 Diploma of Hospitality Management (SIT50422) 96 Diploma of Leadership and Management (BSB50420) 96 Diploma of Travel and Tourism Management (SIT50122) 96 Foundations at VU (JVAC) 0

## Postgraduate courses

<b>Master of Tourism Hospitality and Events Management</b> BMTE
<b>Duration:</b> 2 years. <b>Campus:</b> City.

## Higher Education courses

<b>Bachelor of Laws/Bachelor of Arts</b> LBLA
<b>Duration:</b> 5 years. <b>Campus:</b> City, Footscray Park. <b>ATAR required:</b> Yes. <b>Other admission requirements:</b> Completion of an Australian Senior Secondary Certificate (VCE or equivalent) incl. Units 3 & 4: a study score of at least 30 in English (EAL) or 25 in any other English; <b>plus</b> Units 3 & 4: a study score of at least 20 in one of Economics, any History, Legal Studies, Australian Politics, Global Politics or Psychology.
<b>Pathway into this course from:</b> <b>Credits</b>
Advanced Diploma of Legal Practice (22565VIC) 72

<b>Bachelor of Laws/Bachelor of Business</b> LBWB
<b>Duration:</b> 5 years. <b>Campus:</b> City. <b>ATAR required:</b> Yes. <b>Other admission requirements:</b> Completion of an Australian Senior Secondary Certificate (VCE or equivalent) incl. Units 3 & 4: a study score of at least 30 in English (EAL) or 25 in any other English; <b>plus</b> Units 3 & 4: a study score of at least 20 in one of Economics, any History, Legal Studies, Australian Politics, Global Politics or Psychology.
<b>Pathway into this course from:</b> <b>Credits</b>
Advanced Diploma of Legal Practice (22565VIC) 72

# 2026 Course Guide

Home

Welcome

VU Block Model<sup>®</sup>

No one sees you like VU

Your community, your VU

Here for your whole journey

Unlock your career journey

Health

Education

Law

Business

Sport

Cyber Security

TAFE

Skilled Trades

Uniquely VU

Our courses

Our campuses

VU Early Entry

How to apply

VU alumni

VU Open Day

<b>Bachelor of Laws/ Bachelor of Criminology</b> <b>LBLC</b>
<b>Duration:</b> 4.5 years. <b>Campus:</b> City, Online. <b>ATAR required:</b> Yes. <b>Other admission requirements:</b> Completion of an Australian Senior Secondary Certificate (VCE or equivalent) incl. Units 3 & 4: a study score of at least 30 in English (EAL) or 25 in any other English; plus Units 3 & 4: a study score of at least 20 in one of Economics, any History, Legal Studies, Australian Politics, Global Politics or Psychology.
<b>Pathway into this course from:</b> <b>Credits</b> Advanced Diploma of Legal Practice (22565VIC) 36

<b>Bachelor of Laws/Bachelor of Psychological Studies</b> <b>LBPW</b>
<b>Duration:</b> 5 years. <b>Campus:</b> City, Footscray Park. <b>ATAR required:</b> Yes. <b>Other admission requirements:</b> Completion of an Australian Senior Secondary Certificate (VCE or equivalent) incl. Units 3 & 4: a study score of at least 30 in English (EAL) or 25 in any other English; plus Units 3 & 4: a study score of at least 20 in one of Economics, any History, Legal Studies, Australian Politics, Global Politics or Psychology.
<b>Pathway into this course from:</b> <b>Credits</b> Advanced Diploma of Legal Practice (22565VIC) 36

<b>Bachelor of Laws (Honours) LHLW</b>
<b>Duration:</b> 4 years. <b>Campus:</b> City. <b>Other admission requirements:</b> Students in any Bachelor of Laws may apply to transfer into the Bachelor of Laws (Honours) degree once they have completed a minimum 192 credit points and have attained an average mark of Distinction or above i.e. 70–100%. Applicants will be assessed on the highest grades achieved in the top 12 Law units. Students will be further assessed on an outline of a proposed thesis topic and availability of a college-based or college affiliated supervisor. Successful applicants will enrol in both Advanced Research Legal Methods and Advanced Legal Research Dissertation instead of 24 credit points of law electives.

<b>Bachelor of Laws (Honours) (Graduate Entry) LHGE</b>
<b>Duration:</b> 3 years. <b>Campus:</b> City. <b>Other admission requirements:</b> Students in any Bachelor of Laws may apply to transfer into the Bachelor of Laws (Honours) degree once they have completed a minimum 192 credit points and have attained an average mark of Distinction or above i.e. 70–100%. Applicants will be assessed on the highest grades achieved in the top 12 Law units. Students will be further assessed on an outline of a proposed thesis topic and availability of a college-based or college affiliated supervisor. Successful applicants will enrol in both Advanced Research Legal Methods and Advanced Legal Research Dissertation instead of 24 credit points of law electives.

<b>Bachelor of Laws (Honours)/ Bachelor of Arts LHWA</b>
<b>Duration:</b> 5 years. <b>Campus:</b> City, Footscray Park. <b>Other admission requirements:</b> Students in any Bachelor of Laws may apply to transfer into the Bachelor of Laws (Honours) degree once they have completed a minimum 192 credit points and have attained an average mark of Distinction or above i.e. 70–100%. Applicants will be assessed on the highest grades achieved in the top 12 Law units. Students will be further assessed on an outline of a proposed thesis topic and availability of a college-based or college affiliated supervisor. Successful applicants will enrol in both Advanced Research Legal Methods and Advanced Legal Research Dissertation instead of 24 credit points of law electives.

<b>Bachelor of Laws (Honours)/ Bachelor of Business LHWB</b>
<b>Duration:</b> 5 years. <b>Campus:</b> City, Footscray Park, Online. <b>Other admission requirements:</b> Students in any Bachelor of Laws may apply to transfer into the Bachelor of Laws (Honours) degree once they have completed a minimum 192 credit points and have attained an average mark of Distinction or above i.e. 70–100%. Applicants will be assessed on the highest grades achieved in the top 12 Law units. Students will be further assessed on an outline of a proposed thesis topic and availability of a college-based or college affiliated supervisor. Successful applicants will enrol in both Advanced Research Legal Methods and Advanced Legal Research Dissertation instead of 24 credit points of law electives.

<b>Bachelor of Laws (Honours)/ Bachelor of Criminology LHCR</b>
<b>Duration:</b> 4.5 years. <b>Campus:</b> City, Online. <b>Other admission requirements:</b> Students in any Bachelor of Laws may apply to transfer into the Bachelor of Laws (Honours) degree once they have completed a minimum 192 credit points and have attained an average mark of Distinction or above i.e. 70–100%. Applicants will be assessed on the highest grades achieved in the top 12 Law units. Students will be further assessed on an outline of a proposed thesis topic and availability of a college-based or college affiliated supervisor. Successful applicants will enrol in both Advanced Research Legal Methods and Advanced Legal Research Dissertation instead of 24 credit points of law electives.

<b>Bachelor of Laws (Honours)/Bachelor of Psychology (Honours) LHWP</b>
<b>Duration:</b> 6 years. <b>Campus:</b> City, Footscray Park. <b>ATAR required:</b> Yes. <b>Other admission requirements:</b> Completion of an Australian Senior Secondary Certificate (VCE or equivalent) incl. Units 3 & 4: a study score of at least 30 in English (EAL) or 25 in any other English. Plus Units 3 & 4: a study score of at least 20 in one of Economics, any History, Legal Studies, Australian Politics, Global Politics or Psychology.

<b>Bachelor of Legal Services LBLS</b>
<b>Duration:</b> 3 years. <b>Campus:</b> City, Footscray Park, Online. <b>Other admission requirements:</b> Completion of an Australian Senior Secondary Certificate (VCE or equivalent) incl. Units 3 & 4: a study score of at least 25 in English (EAL) or 20 in any other English.
<b>Pathway into this course from:</b> <b>Credits</b> Advanced Diploma of Legal Practice (22565VIC) 84 Foundations at VU (JVAC) 0

<b>Bachelor of Criminology LBCR</b>
<b>Duration:</b> 3 years. <b>Campus:</b> City. <b>Other admission requirements:</b> Completion of an Australian Senior Secondary Certificate (VCE or equivalent) incl. Units 3 & 4: a study score of at least 25 in English (EAL) or 20 in any other English.
<b>Pathway into this course from:</b> <b>Credits</b> Foundations at VU (JVAC) 0

<b>Bachelor of Criminology/Bachelor of Psychological Studies LBPC</b>
<b>Duration:</b> 4 years. <b>Campus:</b> City. <b>Other admission requirements:</b> Completion of an Australian Senior Secondary Certificate (VCE or equivalent) incl. Units 3 & 4: a study score of at least 25 in English (EAL) or 20 in any other English.

<b>Postgraduate courses</b>
<b>Graduate Certificate in Countering Violent Extremism LTCV</b>
<b>Duration:</b> 1 year. <b>Campus:</b> Online.

<b>Graduate Certificate in Crime Prevention LTCP</b>
<b>Duration:</b> 0.5 years. <b>Campus:</b> City.

<b>Graduate Diploma in Migration Law LGML</b>
<b>Duration:</b> 1 year. <b>Campus:</b> City, Online.
<b>Pathway from this course to:</b> <b>Credits</b> Bachelor of Law (BLAW) 60 Bachelor of Laws (Graduate Entry) (BLGE) 72

## Preparation Studies

Begin your education journey with preparation studies at VU. You'll build confidence, improve your academic skills, and prepare for further study or work through supportive programs designed to help you transition into Higher Education courses or vocational pathways.

<b>Foundation courses</b>
<b>Foundations at VU JVAC</b>
<b>Duration:</b> 13 weeks. <b>Campus:</b> City. <b>Admission requirements:</b> Have attempted an Australian Year 12 (or equivalent) program of study and have successfully completed an Australian Year 11 or a comparable educational level.
<b>Pathway from this course to:</b> Please refer to the VU website for full list of pathway options.

<b>TAFE courses</b>
<b>Certificate I in Transition Education 22567VIC</b>
<b>Duration:</b> 1 year. <b>Campus:</b> Footscray Nicholson, St Albans. <b>Other admission requirements:</b> Entry to the Certificate I in Transition Education (22567VIC) is intended for post-compulsory school-age learners with evidence of a permanent cognitive or intellectual disability. Evidence of permanent cognitive and /or intellectual disability could include but is not limited to: <ul style="list-style-type: none"> <li>Formal assessment by a registered medical practitioner</li> <li>Doctors'/specialist reports</li> <li>Attendance at a Specialist School</li> <li>Integration support at school</li> <li>Integration support at school with modified curriculum</li> </ul>
<b>Pathway from this course to:</b> <b>Credits</b> Certificate II in Work Education (22631VIC) 0
<b>Pathway into this course from:</b> <b>Credits</b> Certificate I in Work Education (22566VIC)
This evidence is provided at the point of application.
<b>Pathway from this course to:</b> <b>Credits</b> Certificate I in Work Education (22566VIC) 0

<b>Certificate I in Work Education 22566VIC</b>
<b>Duration:</b> 1 year. <b>Campus:</b> Footscray Nicholson, St Albans. <b>Other admission requirements:</b> Entry to the Certificate I in Work Education (22566VIC) is intended for post-compulsory school-age learners with evidence of permanent cognitive and/or intellectual disability. Evidence of permanent cognitive and /or intellectual disability could include but is not limited to: <ul style="list-style-type: none"> <li>Formal assessment by a registered medical practitioner</li> <li>Doctors'/specialist reports</li> <li>Attendance at a Specialist School</li> <li>Integration support at school</li> <li>Integration support at school with modified curriculum</li> </ul>
<b>Pathway from this course to:</b> <b>Credits</b> Certificate II in Work Education (22631VIC) 0
<b>Pathway into this course from:</b> <b>Credits</b> Certificate I in Work Education (22566VIC)

<b>Certificate II in Work Education 22631VIC</b>
<b>Duration:</b> 1 year. <b>Campus:</b> Footscray Nicholson. <b>Other admission requirements:</b> Entry to the Certificate II in Work Education (22631VIC) is intended for post-compulsory school-age learners with evidence of a permanent cognitive and /or intellectual disability. Evidence of permanent cognitive and/or intellectual disability could include but is not limited to: <ul style="list-style-type: none"> <li>Formal assessment by a registered medical practitioner</li> <li>Doctors'/specialist reports</li> <li>Attendance at a Specialist School/ SDS</li> <li>Integration support at school</li> <li>Integration support at school with modified curriculum.</li> </ul>

<b>Certificate IV in Tertiary Preparation 22582VIC</b>
<b>Duration:</b> 0.5 years. <b>Campus:</b> Footscray Park.

## Psychology

Explore the human mind at VU: our courses in psychology will help you gain skills across counselling, mental health, and research to support individuals and communities. Graduate ready for further studies, or careers in clinical practice and social work.

<b>TAFE courses</b>
<b>Certificate IV in Mental Health CHC43315</b>
<b>Duration:</b> 1 year. <b>Campus:</b> City, Footscray Nicholson, Online, Werribee. <b>Other admission requirements:</b> Must be at least 18 years of age or over at the commencement of the course.
<b>Pathway from this course to:</b> <b>Credits</b> Bachelor of Psychological Studies (ABPA) 0

<b>Higher Education courses</b>
<b>Undergraduate Certificate in Interpersonal and Organisational Skills HUIO</b>
<b>Duration:</b> 0.5 years. <b>Campus:</b> Footscray Park. <b>Other admission requirements:</b> Completion of an Australian Senior Secondary Certificate (VCE or equivalent) incl. Units 3 & 4: a study score of at least 25 in English (EAL) or 20 in any other English.

<b>Undergraduate Certificate in Psychological Studies HUPS</b>
<b>Duration:</b> 0.5 years. <b>Campus:</b> Footscray Park. <b>Other admission requirements:</b> Completion of an Australian Senior Secondary Certificate (VCE or equivalent) incl. Units 3 & 4: a study score of at least 25 in English (EAL) or 20 in any other English.

<b>Bachelor of Psychological Studies ABPA</b>
<b>Duration:</b> 3 years. <b>Campus:</b> Footscray Park. <b>Other admission requirements:</b> Completion of an Australian Senior Secondary Certificate (VCE or equivalent) incl. Units 3 & 4: a study score of at least 25 in English (EAL) or 20 in any other English.
<b>Pathway into this course from:</b> <b>Credits</b> Certificate IV in Mental Health (CHC43315) 0 Foundations at VU (JVAC) 0

<b>Bachelor of Psychological Studies/ Bachelor of Business ABPB</b>
<b>Duration:</b> 4 years. <b>Campus:</b> Footscray Park. <b>Other admission requirements:</b> Completion of an Australian Senior Secondary Certificate (VCE or equivalent) incl. Units 3 & 4: a study score of at least 25 in English (EAL) or 20 in any other English.
<b>Pathway into this course from:</b> <b>Credits</b> Foundations at VU (JVAC) 0

<b>Bachelor of Psychological Studies (Honours) AHPA</b>
<b>Duration:</b> 1 year. <b>Campus:</b> Footscray Park. <b>Other admission requirements:</b> Completion of an Australian Bachelor degree (or equivalent) with a major psychology. Degree must have been accredited by the Australian Psychology Accreditation Council (APAC); plus a minimum Weighted Average Mark (WAM) of 70% is required across all core third year psychology units. Note that all applications are ranked according to academic merit, therefore the cut-off WAM for receiving an offer differs from year to year and may be substantially higher than the minimum requirement of 70%.

<b>Bachelor of Psychology (Honours) ABPC</b>
<b>Duration:</b> 4 years. <b>Campus:</b> Footscray Park. <b>ATAR required:</b> Yes. <b>Other admission requirements:</b> Completion of an Australian Senior Secondary Certificate (VCE or equivalent) incl. Units 3 & 4: a study score of at least 25 in English (EAL) or 20 in any other English.

<b>Example Pathway</b> 	<b>START</b>	<b>Certificate IV in Legal Services (BSB40620)</b>	<b>0.5 years</b>
	<b>+</b>	<b>Advanced Diploma of Legal Practice (22565VIC)</b>	<b>1.5 years</b>
	<b>+</b>	<b>Bachelor of Laws (BLAW)</b>	<b>9 months' credit applied</b>   <b>3 years &amp; 3 months</b>

For more information on courses and TAFE admission requirements, visit the course pages on our website. Information is correct at the time of publication. All higher education courses require completion of an Australian Senior Secondary Certificate (VCE or equivalent) unless students are entering via a pathway. Some courses may have additional entry requirements than listed here. Please check the website course pages for more details. Bachelor's Degrees are traditionally three years in duration. Honours will generally extend the duration of the course by 1–2 years. \*Please see course page for additional admissions requirements. \*\*Meeting the minimum requirement for entry to second year does not guarantee entry. Places are limited and applicants will be competitively ranked based on course Weighted Average Mark from the first two semesters of study. \*\*\*There may be a limit on how many students can access pathways to this course due to high demand. If you are eligible for a pathway but unsuccessful in securing a place, please contact VUHQ (Student Service Centre) on +61 3 9919 6100 for advice. 'Industry' location: For selected programs, VU collaborates with organisations to provide training directly in the workplace. ^DSSS: Vocational Education and Training (VET) delivered to school students. CRICOS 00124K (Melbourne), 02475D (Sydney and Brisbane), RTO 3113. TEQSA PRV12152.

# 2026 | Course Guide

Home

Welcome

VU Block Model®

No one sees you like VU

Your community, your VU

Here for your whole journey

Unlock your career journey

Health

Education

Law

Business

Sport

Cyber Security

TAFE

Skilled Trades

Uniquely VU

Our courses

Our campuses

VU Early Entry

How to apply

VU alumni

VU Open Day

**Graduate Certificate in Counselling Theory and Practice** HTCP  
**Duration:** 0.5 years. **Campus:** Online.

**Graduate Certificate in Mental Health** HTMH  
**Duration:** 8 months. **Campus:** Online.

**Graduate Diploma in Counselling** AGPD  
**Duration:** 2 years. **Campus:** City.  
**Other admission requirements:** An interview is required for applicants to this course.

**Graduate Diploma in Counselling Theory and Practice** HGCP  
**Duration:** 1 year. **Campus:** Online.

**Master of Applied Psychology (Clinical Psychology)** AMAL  
**Duration:** 2 years. **Campus:** Footscray Park.  
**Other admission requirements:** Applicants will also be required to:  

- Submit a completed VU supplementary information form.
- Provide two referee statements (one personal and one academic) submitted via Australian Psychology Postgraduate Reference System at <https://www.psychologyreference.org/>
- Attend an interview (short listed applicants only)
- Obtain a Working with Children Check prior to being placed in a work placement setting, in accordance with the accreditation requirements and the Department of Justice.

 Students with an overseas qualification in psychology will need to provide certification from the Australian Psychology Society (APS) that their qualification/s are equivalent to an APAC-approved, 4-year sequence in psychology.

**Master of Child and Adolescent Mental Health** HMCH  
**Duration:** 2 years. **Campus:** Online.

## Sport & Exercise Science

Bring your love for sport to life: our courses in sport and exercise science will see you develop industry-relevant, hands-on skills in sport science, physical education or rehabilitation to thrive in your fitness, health, or science career.

TAFE courses	
<b>Diploma of Remedial Massage</b> HLT52021	
<b>Duration:</b> 1 year. <b>Campus:</b> City.	
<b>Pathway from this course to:</b>	<b>Credits</b>
Bachelor of Exercise Science (Clinical Practice) (ABHE)	0
Bachelor of Outdoor Education and Environmental Science (SBHP)	
Bachelor of Sport Science (Human Movement)/Bachelor of Sport Management (SBHS)	0
Bachelor of Sport Science (SBOE)	0
Bachelor of Physical Education and Sport Science (SBPH)	0
Bachelor of Sport Science (SBSA)	0
Bachelor of Sport Management/Bachelor of Business (SBSB)	0
Bachelor of Sport Management (SBSM)	0

**Higher Education courses**

**Undergraduate Certificate in Primary Physical Education** SUPP  
**Duration:** 0.5 years. **Campus:** Footscray Park.  
**Other admission requirements:** Completion of an Australian Senior Secondary Certificate (VCE or equivalent) incl. Units 3 & 4: a study score of at least 25 in English (EAL) or 20 in any other English.

**Undergraduate Certificate in Secondary Physical Education** SUSP  
**Duration:** 0.5 years. **Campus:** Footscray Park.  
**Other admission requirements:** Completion of an Australian Senior Secondary Certificate (VCE or equivalent) incl. Units 3 & 4: a study score of at least 25 in English (EAL) or 20 in any other English.

**Bachelor of Applied Movement Sciences/Master of Physiotherapy** HCPT  
**Duration:** 4.5 years. **Campus:** Footscray Park.  
**ATAR required:** Yes.  
**Other admission requirements:** year 12: Completion of an Australian Senior Secondary Certificate (VCE or equivalent) incl. Units 3 & 4: a study score of at least 30 in English (EAL) or 25 in any other English; plus a study score of at least 25 in one of Biology, Chemistry or Physics, Mathematical Methods (any) or Specialist Mathematics.

**Bachelor of Exercise Science (Clinical Practice)** ABHE  
**Duration:** 3 years. **Campus:** Footscray Park.  
**Other admission requirements:** Completion of an Australian Senior Secondary Certificate (VCE or equivalent) incl. Units 3 & 4: a study score of at least 25 in English (EAL) or 20 in any other English.  
**Pathway into this course from:**

	Credits
Diploma of Remedial Massage (HLT52021)	0
Foundations at VU (JYAC)	0

**Bachelor of Exercise Science (Sport Practice)** ABHD  
**Duration:** 3 years. **Campus:** Footscray Park.  
**ATAR required:** Yes.  
**Other admission requirements:** Completion of an Australian Senior Secondary Certificate (VCE or equivalent) incl. Units 3 & 4: a study score of at least 25 in English (EAL) or 20 in any other English.  
**Pathway into this course from:**

	Credits
Foundations at VU (JYAC)	0

**Bachelor of Physical Education and Sport Science** SBPH  
**Duration:** 3 years. **Campus:** Footscray Park.  
**Other admission requirements:** Completion of an Australian Senior Secondary Certificate (VCE or equivalent) incl. Units 3 & 4: a study score of at least 25 in English (EAL) or 20 in any other English.  
**Pathway into this course from:**

	Credits
Diploma of Remedial Massage (HLT52021)	0
Foundations at VU (JYAC)	0

**Master of Counselling** AMPE  
**Duration:** 2 years. **Campus:** City.  
**Other admission requirements:** Applicants must be able to provide academic and professional references and are required to attend a selection interview.

**Master of Mental Health** HMMH  
**Duration:** 2 years. **Campus:** Online.

**Master of Professional Psychology** HMPP  
**Duration:** 1 year. **Campus:** Footscray Park.  
**Other admission requirements:** Applicants will also be required to:  

- Submit a completed VU supplementary information form.
- Provide two referee statements (one personal and one academic) submitted via Australian Psychology Postgraduate Reference System at <https://www.psychologyreference.org/>
- Attend an interview (short listed applicants only)
- Obtain a Working with Children Check prior to being placed in a work placement setting, in accordance with the accreditation requirements and the Department of Justice.

 Students with an overseas qualification in psychology will need to provide certification from the Australian Psychological Society (APS) that their qualification/s are equivalent to an APAC-approved, 4-year sequence in psychology.

**Bachelor of Sport Science** SBSA  
**Duration:** 3 years. **Campus:** Footscray Park.  
**Other admission requirements:** Completion of an Australian Senior Secondary Certificate (VCE or equivalent) incl. Units 3 & 4: a study score of at least 25 in English (EAL) or 20 in any other English.  
**Pathway into this course from:**

	Credits
Diploma of Remedial Massage (HLT52021)	0
Foundations at VU (JYAC)	0

**Bachelor of Science (Osteopathy)/Master of Health Science (Osteopathy)** HCOP  
**Duration:** 4.5 years. **Campus:** City.  
**ATAR required:** Yes.  
**Other admission requirements:** Completion of an Australian Senior Secondary Certificate (VCE or equivalent) incl. Units 3 & 4: a study score of at least 25 in English (EAL) or 20 in any other English; plus a study score of at least 20 in one of Biology, Chemistry, any Mathematics or Physics.

**Bachelor of Sport Science (Human Movement)/Bachelor of Psychological Studies** SBHP  
**Duration:** 4 years. **Campus:** Footscray Park.  
**Other admission requirements:** Completion of an Australian Senior Secondary Certificate (VCE or equivalent) incl. Units 3 & 4: a study score of at least 25 in English (EAL) or 20 in any other English.  
**Pathway into this course from:**

	Credits
Diploma of Remedial Massage (HLT52021)	0
Foundations at VU (JYAC)	0

**Bachelor of Sport Science (Human Movement)/Bachelor of Sport Management** SBHS  
**Duration:** 4 years. **Campus:** Footscray Park.  
**Other admission requirements:** Completion of an Australian Senior Secondary Certificate (VCE or equivalent) incl. Units 3 & 4: a study score of at least 25 in English (EAL) or 20 in any other English.  
**Pathway into this course from:**

	Credits
Diploma of Remedial Massage (HLT52021)	0
Foundations at VU (JYAC)	0

**Postgraduate courses**

**Graduate Certificate in Data Analytics for Sport Performance** STSP  
**Duration:** 0.5 years. **Campus:** Footscray Park, Online.

**Graduate Certificate in Sport Integrity** STSI  
**Duration:** 0.5 years. **Campus:** City.

## Trades

Graduate job-ready and prepared to build and innovate across Australia's booming trades sector – and step into in-demand roles. Turn your technical know-how into a hands-on career in plumbing, electrotechnology, civil construction, cabinet making or carpentry – begin with a trade at VU.

**TAFE courses**

**Certificate II in Building and Construction** Pre-apprenticeship 22614VIC  
**Duration:** 4 months + 2 years VDSS.  
**Campus:** Sunshine, Werribee, Industry.

**Certificate II in Cabinet Making and Timber Technology** MSF20322  
**Duration:** 4 months. **Campus:** Sunshine.

**Certificate II in Civil Construction** RII20720  
**Duration:** 10 weeks + 2 years VDSS.  
**Campus:** Sunshine, Werribee, Industry.

**Certificate II in Drainage** CPC20720  
**Duration:** 2 years. **Campus:** Sunshine.

**Certificate II in Electrotechnology (Pre-vocational)** 22682VIC  
**Duration:** 4 months + 2 years VDSS.  
**Campus:** Sunshine, Werribee, Industry.

**Graduate Certificate in Strength and Conditioning** STSA  
**Duration:** 0.5 years. **Campus:** Footscray Park.

**Master of Clinical Exercise Science and Rehabilitation** AMEP  
**Duration:** 1.5 years. **Campus:** Footscray Park.

**Certificate II in Engineering Studies** 22632VIC  
**Duration:** 3 months + 2 years VDSS.  
**Campus:** Sunshine.

**Certificate II in Plumbing (Pre-apprenticeship)** 22569VIC  
**Duration:** 4 months + 2 years VDSS.  
**Campus:** Sunshine, Werribee.

**Certificate III in Bricklaying and Blocklaying** CPC33020  
**Duration:** 3 years Apprenticeship.  
**Campus:** Sunshine.

**Certificate III in Cabinet Making and Timber Technology** MSF30322  
**Duration:** Up to 4 years Apprenticeship.  
**Campus:** Sunshine.

**Certificate III in Carpentry** CPC30220  
**Duration:** Up to 4 years Apprenticeship.  
**Campus:** Sunshine.

**Certificate III in Civil Construction Plant Operations** RII30820  
**Duration:** 0.5 years + up to 3 years Traineeship.  
**Campus:** Werribee, Industry.

**Certificate III in Electrotechnology Electrician** UEE30820  
**Duration:** 4 years Apprenticeship.  
**Campus:** Sunshine.

**Master of Physiotherapy** HMPs  
**Duration:** 2 years. **Campus:** Footscray Park.

**Master of Sport and Exercise Science** SMES  
**Duration:** 1.5 years. **Campus:** Footscray Park.

**Certificate III in Engineering – Fabrication Trade** MEM31922  
**Duration:** Up to 4 years Apprenticeship.  
**Campus:** Sunshine.

**Certificate III in Engineering – Mechanical Trade** MEM30219  
**Duration:** Up to 4 years Apprenticeship.  
**Campus:** Sunshine.

**Certificate III in Plumbing** CPC32420  
**Duration:** 4 years Apprenticeship.  
**Campus:** Sunshine.

**Certificate III in Signs and Graphics** CPC30216  
**Duration:** Up to 4 years Apprenticeship.  
**Campus:** Sunshine.

**Certificate IV in Civil Construction** RII40720  
**Duration:** 1 year + up to 2.5 years Traineeship.  
**Campus:** Online, Werribee, Industry.  
**Other admission requirements:** Local admission requirements for direct applicants:  

- Must be employed in the civil construction industry ideally as a foreman.
- Must submit a copy of their resume to confirm their industry experience and current position.

**Certificate IV in Plumbing and Services** CPC40920  
**Duration:** 3 years. **Campus:** Sunshine.  
**Other admission requirements:** Applicants must complete pre-training review and literacy and numeracy assessment to determine suitability: hold Certificate III in Plumbing or be authorised to undertake plumbing work by an Australian regulator/licensing body.

**For more information on courses and TAFE admission requirements, visit the course pages on our website.** Information is correct at the time of publication. All higher education courses require completion of an Australian Senior Secondary Certificate (VCE or equivalent) unless students are entering via a pathway. Some courses may have additional entry requirements than listed here. Please check the website course pages for more details. Bachelor's Degrees are traditionally three years in duration. Honours will generally extend the duration of the course by 1–2 years. \*Please see course page for additional admissions requirements. \*\*Meeting the minimum requirement for entry to second year does not guarantee entry. Places are limited and applicants will be competitively ranked based on course Weighted Average Mark from the first two semesters of study. \*\*\*There may be a limit on how many students can access pathways to this course due to high demand. If you are eligible for a pathway but unsuccessful in securing a place, please contact VUHQ (Student Service Centre) on +61 3 9919 6100 for advice. \*Industry\* location: For selected programs, VU collaborates with organisations to provide training directly in the workplace. \*VDSS\*: Vocational Education and Training (VET) delivered to school students. CRICOS 00124K (Melbourne), 02475D (Sydney and Brisbane). RTO 3113. TEQSA PRV12152.

# 2026 | Course Guide

- Home
- Welcome
- VU Block Model®
- No one sees you like VU
- Your community, your VU
- Here for your whole journey
- Unlock your career journey
- Health
- Education
- Law
- Business
- Sport
- Cyber Security
- TAFE
- Skilled Trades
- Uniquely VU
- Our courses
- ◆ Our campuses
- VU Early Entry
- How to apply
- VU alumni
- VU Open Day

## Campuses built for success

VU campuses are built for every kind of learner. From our VU City Tower in the CBD to Footscray, Sunshine, St Albans, and Werribee, each campus gives you the space to succeed. All are easily accessible by public transport, with industry links, dynamic learning spaces, and state-of-the-art facilities.



## City Campus

### VU City Tower

370 Little Lonsdale Street, Melbourne.

Study in the heart of Melbourne's CBD at the purpose-built VU City Tower, in the city's vibrant business and law precincts. With dynamic learning spaces and modern technology, it offers a supportive and engaging environment for students.

**Features:** Collaborative classrooms, student-run health and beauty clinics, study spaces, IT support and student services, prayer room, the VU SAP Academy and student lounge and cafes.

**Course areas:** Business, Criminology, Education, English, Hair & Beauty, Health, Massage, Osteopathy and Psychology.

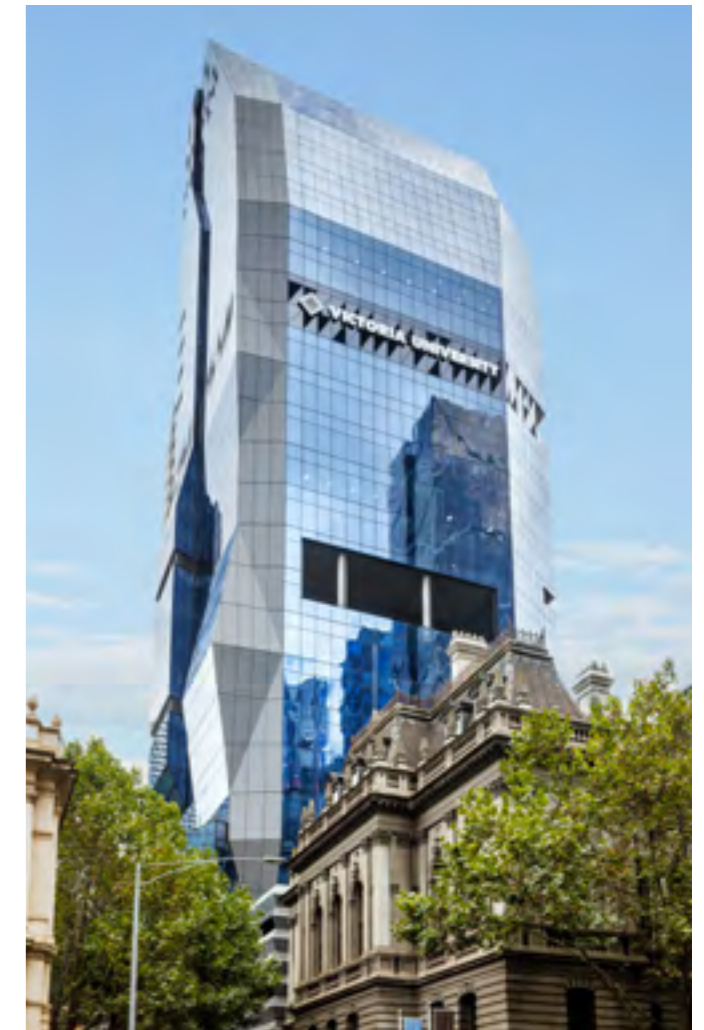
### 295 Queen St building

Located next door to VU City Tower, 295 Queen St is our official law faculty precinct – you'll find it easy to build your passion for law and kick-start your career within this historic and atmospheric law building.

**Features:** Simulation Moot Courts, a specialised law library, and a prayer room.

**Course areas:** Law & Legal Practice.

**Industry partners on campus:** ICN (Industry Capability Network) and law firm Sharpe & Abel.



## Footscray Nicholson

Corner of Nicholson & Buckley Streets, Footscray.

Focused on TAFE courses, the campus features modern learning facilities, along with unique student-run enterprises, including a restaurant and a tax clinic.

**Features:** Hospitality training restaurant (VenU), childcare training spaces, a student-run tax clinic, prayer room, a recreation centre with sports courts and a library perfect for studying.

**Course areas:** Business, Community Services, Early Childhood Education & Care, Events Management, Hospitality, Legal Practice, Music, School-Based Education & Support and the Western Melbourne English Program.

**Industry partners on campus:** Non-profit organisation Western Chances, who provide opportunities and support for young people in Melbourne's west.



# 2026 | Course Guide

Home

Welcome

VU Block Model®

No one sees you like VU

Your community, your VU

Here for your whole journey

Unlock your career journey

Health

Education

Law

Business

Sport

Cyber Security

TAFE

Skilled Trades

Uniquely VU

Our courses

◆ Our campuses

VU Early Entry

How to apply

VU alumni

VU Open Day



## Footscray Park

70–104 Ballarat Road, Footscray.

Overlooking the Maribyrnong River parklands, VU's original and largest campus is in the heart of one of Australia's fastest-growing regions – Melbourne's west. A huge investment in a new health precinct will elevate the campus further, establishing a destination for innovative health-focused teaching, research, and community services, and connecting directly to the new Footscray Hospital.

**Features:** Biomechanics labs, Aquatic and Fitness Centre, Altitude Hotel, engineering labs, a TV and broadcast studio, Pride room and prayer rooms. Plus, our modern student accommodation, UniLodge Victoria University, is right over the road.

**Course areas:** Arts, Business, Engineering, Education, Psychology, Science & Sports Sciences.

**Industry partners on campus:** Western Health, with the new state-of-the-art Footscray Hospital opening soon.

## St Albans

University Boulevard, St Albans.

Our VU hub for arts, science and health courses. Study surrounded by native gardens and gum trees, enjoying hands-on learning in our innovative facilities and with industry partners – all on-site.

**Features:** Health and nutrition labs, gym and sports courts, prayer rooms, and our Cyber Security Training Centre – a state-of-the-art facility giving students the opportunity to experience and tackle real-world cyber threat scenarios.

**Course areas:** Arts, Biomedical Sciences, Cyber Security & IT, Health, Nursing, Nutrition, Paramedicine and the Western Melbourne English Program.

**Industry partners on campus:** Autism Spectrum Australia (Aspect), Lifeline Western Melbourne and Melbourne City Mission (MCM).



## Sunshine

438–460 Ballarat Road, Sunshine North.

The VU home of trades, health, and engineering, showcasing industry-leading simulation labs and world-class training facilities. With specialised spaces for hands-on learning, students build their skills and experience firsthand, getting ready to make an impact in their industries.

**Features:** Our multi-million-dollar trades facilities, robotics and 3D-printing labs, a high-tech simulation nursing lab, a paramedic pod, prayer rooms, and Australia's first Centre of Excellence in Paramedicine on campus, in partnership with Ambulance Victoria.

**Course areas:** Community Health, Construction, Electrical, Engineering, Nursing, Paramedicine, Plumbing and the Western Melbourne English Program.

**Industry partners on campus:** Ambulance Victoria.

## Werribee

235 Hoppers Lane, Werribee.

Werribee campus is a hub for research, science, education, and trades at VU. Featuring specialised facilities for teaching, research, and practical skills development, this campus is the launchpad for both students and researchers to make their impact in the scientific and construction industries.

**Features:** Extensive trades facilities, major scientific research labs, Werribee Children's Centre, a health and fitness centre, a prayer room – and the renowned Wyndham Tech School, where school students can explore their futures via high-tech, hands-on learning programs driven by industry and skills development.

**Course areas:** Biomedical Sciences, Community Health, Civil Construction, Community Services, Construction, Criminal Justice, Early Childhood Education & Care, Education, Electrical, Engineering, Nursing, Paramedicine, Plumbing and the Western Melbourne English Program.

**Industry partners on campus:** Orygen, Australia's Centre of Excellence for Youth Mental Health.

# 2026 | Course Guide

Home

Welcome

VU Block Model®

No one sees you like VU

Your community, your VU

Here for your whole journey

Unlock your career journey

Health

Education

Law

Business

Sport

Cyber Security

TAFE

Skilled Trades

Uniquely VU

Our courses

Our campuses

◆ VU Early Entry

◆ How to apply

VU alumni

VU Open Day

# Thinking ahead?

## VU» Early Entry



Start your VU journey before your final exams even begin! If you're in year 11 or 12, you can take the pressure off during your final school years while getting a head start on your future with our VU Early Entry program.

### Fast track your next move

Why wait until after your exams to know where you're headed? If you're in Year 12, we'll provide you with a Conditional Offer\* before you finish the year – so you can rest easy knowing you've got a clear goal. We'll use your VTAC preferences, and if you change your mind later, you can adjust your choices through the VTAC period to find the ideal course for you.

### Get ahead even earlier

Our VU Early Entry program isn't just for Year 12 students: if you're in Year 11, you can apply too. While you won't receive a Conditional Offer, you can still enjoy many of the same benefits – and feel even more prepared for your next move when the time comes.

“I was so grateful for the five bonus ATAR points that the program provided – it made the difference between getting into law and not.”

Elisse  
VU Early Entry student

### Scholarships to support your journey

You could be eligible for up to \$5,000 with the VU Early Entry Scholarship, helping fund your studies. And another bonus? When you apply for VU Early Entry, you'll automatically be considered for the scholarship.

### Get the support you need

We'll provide personalised course advice to help you thrive. With the right support, everyone can succeed – and we're here to help you do it your way.

### Exclusive perks for you

As a VU Early Entry member, you'll enjoy exclusive benefits like:

- ◆ Five bonus ATAR points to boost your score^
- ◆ Free gym access for you and a friend, with a 30-use pass
- ◆ A free ATAR Notes+ membership to support your studies.

\*If you are completing scored VCE and are in Year 12, you are eligible to receive a Conditional Offer for a VU Bachelor course of your choosing. Bachelor of Education (P-12) and Bachelor of Education (Primary) are excluded from Conditional Offers. If you preference these courses you will receive an alternative Conditional Offer.

^Bachelor of Education (P-12) and Bachelor of Education (Primary) are excluded.

# Ready to start?



## Explore our courses

Discover our study areas and courses here: [vu.edu.au/courses](https://vu.edu.au/courses)



## Join us at VU Open Day

Join us at our exciting Open Day events in August to immerse yourself in VU. You'll hear from current students, meet your future teachers, discover our industry partners and explore our campuses.



## Ready to apply?

If you're a current Year 12 student, for most courses, you'll apply through VTAC. For all other students, you can apply online now. Head to [vu.edu.au](https://vu.edu.au)



## More questions?

If you need support, advice or questions answered, you can reach out to us – we're here to help make it easy for you.

Email our team: [student.recruitment@vu.edu.au](mailto:student.recruitment@vu.edu.au)

Enquire online: [vu.edu.au/contact-us](https://vu.edu.au/contact-us)

Call us: **03 9919 6100**

# 2026 | Course Guide

- Home
- Welcome
- VU Block Model®
- No one sees you like VU
- Your community, your VU
- Here for your whole journey
- Unlock your career journey
- Health
- Education
- Law
- Business
- Sport
- Cyber Security
- TAFE
- Skilled Trades
- Uniquely VU
- Our courses
- Our campuses
- VU Early Entry
- How to apply
- VU alumni
- VU Open Day

“VU inspired my curiosity and helped shape my core belief in the power of collaboration, whether through co-branded projects with influencers or capsule designs with major brands (such as Adidas and Asics).

“Their focus on real-world application and innovation prepared me to navigate the competitive footwear industry and instilled a resilient mindset.”

### Vince Lebon

**Career:** CEO and founder of shoe brand Rollie Nation – now stocked in 11 countries and 500+ stores worldwide – and VU’s Executive in Residence in 2024.

**Studied:** VU Advanced Diploma of Arts (Electronic Design & Interactive Media)



“The VU Block Model and placements provided me with extensive hands-on experience, preparing me for my career as I developed my teaching skills in real classrooms.

“VU’s approach to education has shaped my teaching philosophy, leading me to where I am today. It not only prepared me for my career but has also contributed significantly to my personal growth and professional confidence.”

### Devika Chaudhary

**Career:** Mathematics and Physics Teacher at The University High School, Parkville and STEM Advisor for the Australian Air Force Cadets.

**Studied:** Diploma of Education Studies, Bachelor of Education (P-12)



# See all that you can be

Meet some inspiring VU alumni who have not only launched fulfilling careers but are making an impact in their fields – and shaping the future.

To see more of our VU community alumni visit [vu.edu.au/success-stories](https://vu.edu.au/success-stories)

“VU played a crucial role in helping me find my first job after graduating – their mentorship program and activities gave me the edge I needed to step into the professional world. Today, working as a software engineer, I firmly believe the foundation laid by VU was instrumental.”

### Nobel Subedi

**Career:** Started as IT graduate at NEC Australia before transitioning into current role as Associate Software Development Engineer.

**Studied:** Bachelor of Information Technology



“My placement was transformative, giving me firsthand experience in the field but also helping me get my foot in the door. My time at VU broadened my understanding of what’s possible in my career – it taught me that I could channel my passion into impactful, meaningful work.”

### Rhys Gleeson

**Career:** Aboriginal Hospital Liaison Lead and First Nations Hospital Lead at The Alfred Hospital, Melbourne.

**Studied:** Diploma of Community Services CHC52021



“I truly believe VU prepared me for working in the industry and supported my personal growth, and my course played a pivotal role in shaping my career. Providing practical skills and real-world experience, it taught me how to adapt to challenges and work with diverse groups – essential in my role today.”

### Selin Arpaci

**Career:** Diversity and Inclusion Coordinator at Football Victoria.

**Studied:** Bachelor of Sport Science



“My VU course played a huge part in my journey, providing me with the necessary skills, relationships and resources to start my journey in the hair industry. I was equipped with hands-on experience and guidance from knowledgeable educators. Studying at VU was one of the best decisions I’ve ever made.”

### Matt McMillan

**Career:** Owner and founder of barbershop The Town Barber in Rochester, Victoria.

**Studied:** Certificate III in Barbering SHB30516





# 2026 | Course Guide

Home

Welcome

VU Block Model®

No one sees you like VU

Your community, your VU

Here for your whole journey

Unlock your career journey

Health

Education

Law

Business

Sport

Cyber Security

TAFE

Skilled Trades

Uniquely VU

Our courses

Our campuses

VU Early Entry

How to apply

VU alumni

◆ VU Open Day



## Join us at our 2025 Open Day

17 August Footscray Park  
24 August VU City Tower

“We warmly invite you to be part of a thriving, inclusive community where you’ll have the chance to make new friends, discover boundless opportunities and create your own future.”

Professor Adam Shoemaker  
VU Vice-Chancellor