

Victoria University

Clinical Health Teaching Facility & Campus Gateway



Landscape Design Report - Milestone 1

Prepared for Plenary Group

Acknowledgement of Country



We pay our respects to the Traditional Custodians of Country throughout Australia, their Elders and ancestors, recognising their rich heritage and enduring connection to Country and acknowledging the ongoing sovereignty of all Aboriginal and Torres Strait Islander Nations.

We recognise the profound connection to land, waters, sky and community of the First Nations peoples, with continuing cultures that are among the oldest in human history. We recognise that they are skilled land shapers and place makers, with a deep and rich knowledge of this land which they have cared for, protected and balanced for millennia.

Our Country, 2022
88 x 119 cm Acrylic on canvas
Original artwork by
Alfred Carter
Gunaikurnai

Victoria University - Clinical Health Teaching Facility & Campus Gateway _ Milestone 1
Landscape Report for Town Planning

Prepared for
Plenary Group

Project Number
0323-0480-00-L-01-RP07

Revision (see below)
02

Prepared By
LP & ILC

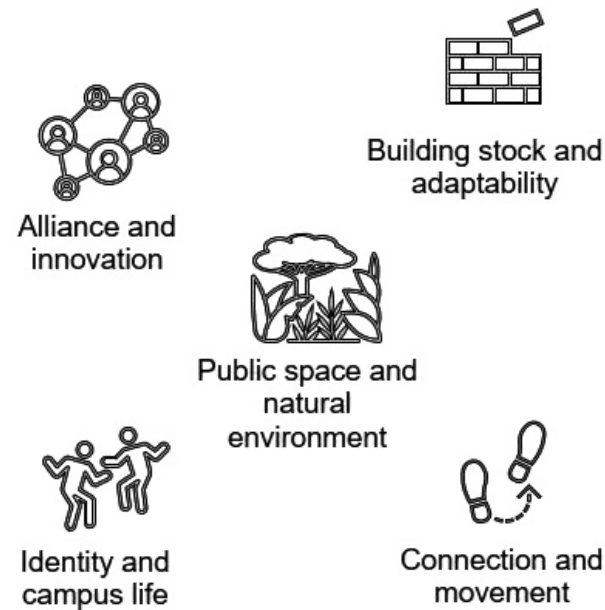
Reviewed By
NS

Project Principal
DL

Issued
03 October 2024

As one of the key initiatives in Victoria University’s current Strategic Plan 2022-28, the formation of a new Campus Gateway to the Footscray Park campus is at the core of the University’s vision for a connected educational institution. This sense of connection extends to the local community, to its students and academics and to its proud history of providing education to all who wish to learn, Victoria University aspires to make these connections tangible and accessible to all. As a key expression of this, VU have developed a Masterplan for each campus that aims to connect the natural, human-built, digital and social environments together in spaces that are inclusive, sustainable, inspiring and long lasting. The Masterplan encompasses the University’s five key pillars, including;

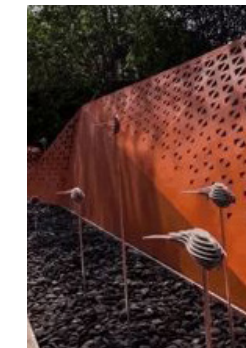
- Building stock and adaptability
- Alliance and innovation
- Public space and natural environment
- Connection and movement
- Identity and Campus life



As an expression of Victoria University’s Masterplan themes, the new Clinical Health Teaching Facility (CHTF) landscape and Campus Gateway will continue the evolution of the Footscray campus’ public spaces as sites for meeting, sharing and collaboration. The landscape design will strive to realise places that students, academics and the local community feel energised, inspired and included. Broader campus spatial endeavours such as safety, inclusivity and active transport will be woven into the design as can be accommodated within the extent of works.

Connections with the wider Footscray urban interface and the Ballarat Road streetscape are also key considerations in our development of the landscape design response, while the formation of the campus Gateway adjacent the CHTF forecourt is a crucial area to set the tone of the Masterplan.

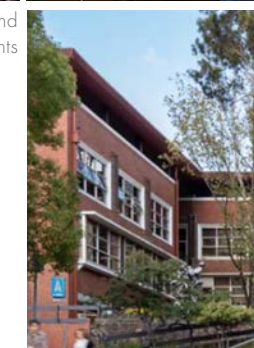
Bring the campus out to the street by continuing the landscape grain of the campus



Pedestrian scale detailing and landscape elements



Express elements of both the University’s and Footscray’s character in the campus entry



Revisions

No.	Date	Description	Prepared By	Reviewed By	Project Principal
01	20.09.2024	For Information	LP/ILC	NS	DL
02	23.09.2024	For Informaiton	LP/ILC	NS	DL
03	22.10.2024	For Information	LP/ILC	NS	DL

1 Urban Context



First Nations

Sited on Wurundjeri land atop the Maribyrnong River escarpment, the site of the new Clinical Health Teaching Facility and Campus Gateway is surrounded by a rich indigenous cultural landscape. For thousands of years the banks of the River have been a gathering place for the Wurundjeri people of the Kulin Nation as well as other First Nations people.

"The river was a boundary between the Marin balug and the Yallukit willam clans and was probably an important gathering point for social, economic and ceremonial interaction."

(Maribyrnong Aboriginal Heritage Study, Biosis, 1999)

Today, the University's Footscray campus continues a long tradition as a place of gathering for First Nations people of the inner west as well as holding a significant archive of post-colonial aboriginal history.

Solomon's Ford, (Avondale Heights) where a working fish trap was observed in 1803. "...an important crossing place for the Aboriginal people as well as a source of food."

Wurundjeri Willam, The Original Inhabitants of Moonee Valley

Legend

-  Bus stop
-  Tram stop
-  Train station
-  Major arterial road

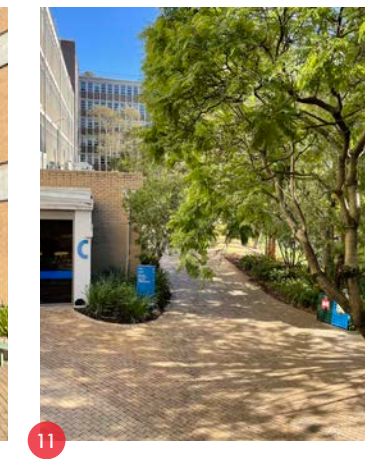
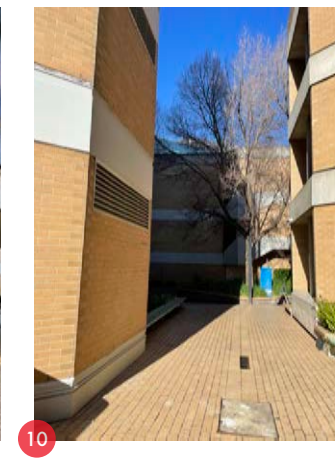
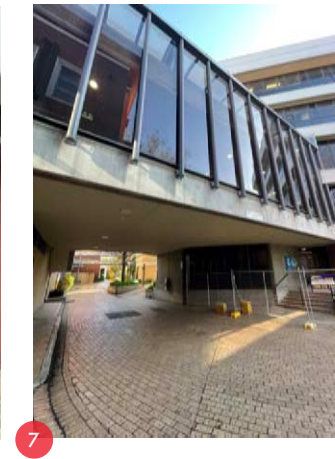
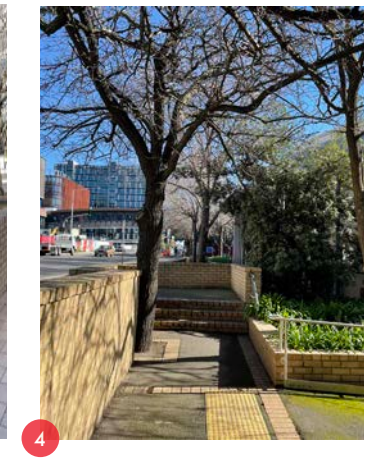
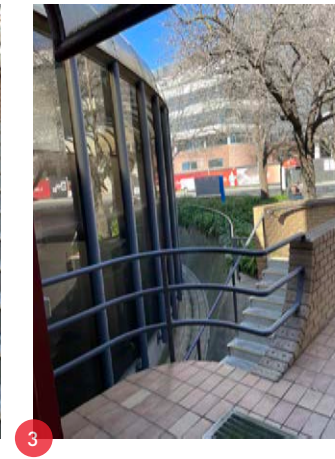
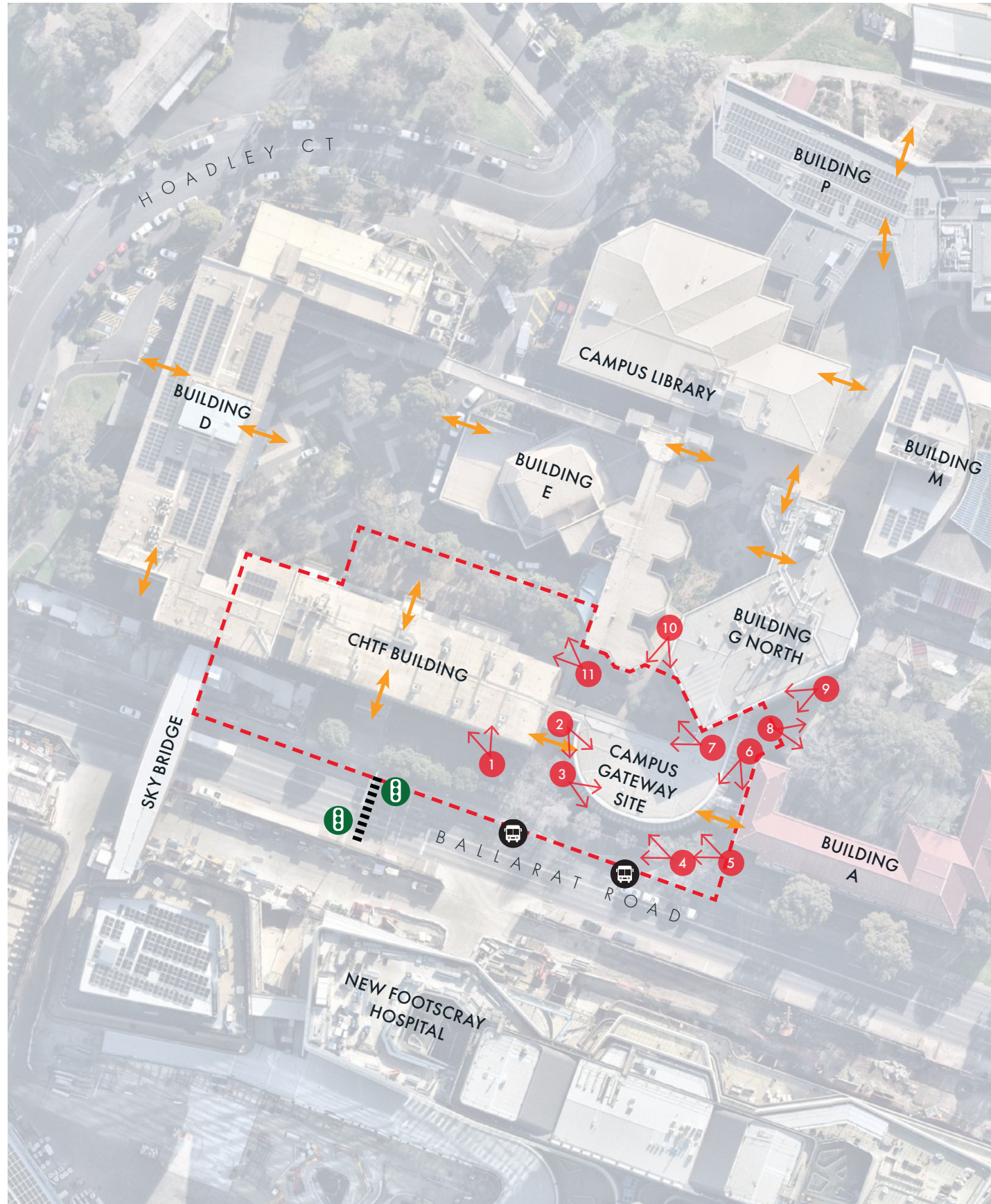
Landscape

VU's Ballarat Road campus holds a special place in the history of the inner-west. Originating as a technical college (Footscray Technical School) for working families of the western suburbs, it has developed into more than merely a place of learning, it is now also a place of enquiry, sharing and gathering for the local community. With facilities such as a swimming pool and connections to the sporting grounds on the banks of the Maribyrnong River, VU Footscray has ties to many local clubs and activities beyond student and academic life.

With the New Footscray Hospital (NFH) soon to be completed on the other side of Ballarat Road, these connections will be further enhanced and will locate Victoria University at the heart of a health and well-being precinct. Connected directly via a pedestrian bridge across Ballarat Road, the site for the Clinical Health Teaching Facility (CHTF) will announce the University's status as a key collaborator in this space. It's central position on the Campus' Ballarat Road frontage is also a significant step in realising the University's Masterplan which aspires to an open and inviting presence with connections to the Hospital and central Footscray beyond.

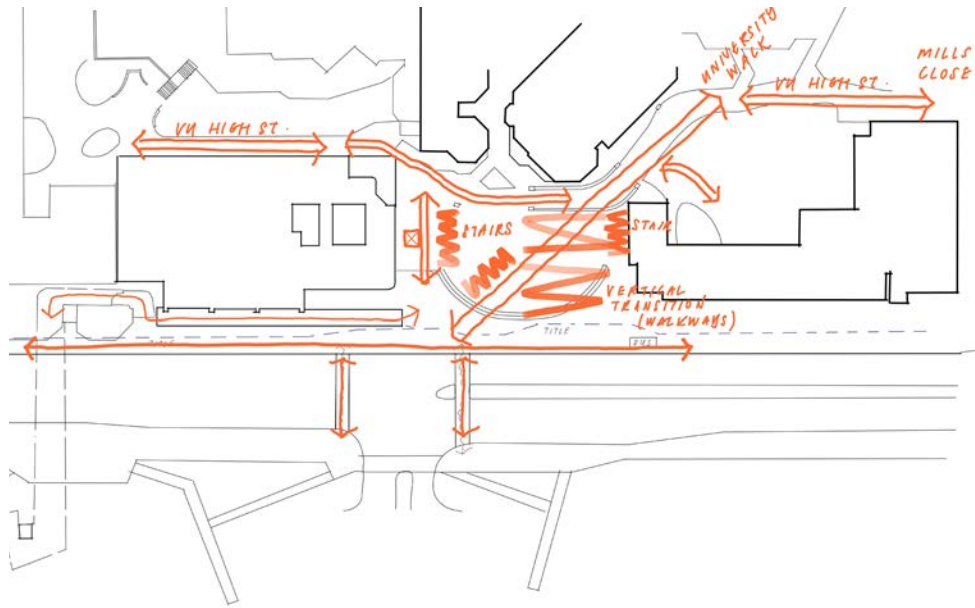


2 Existing Site Context



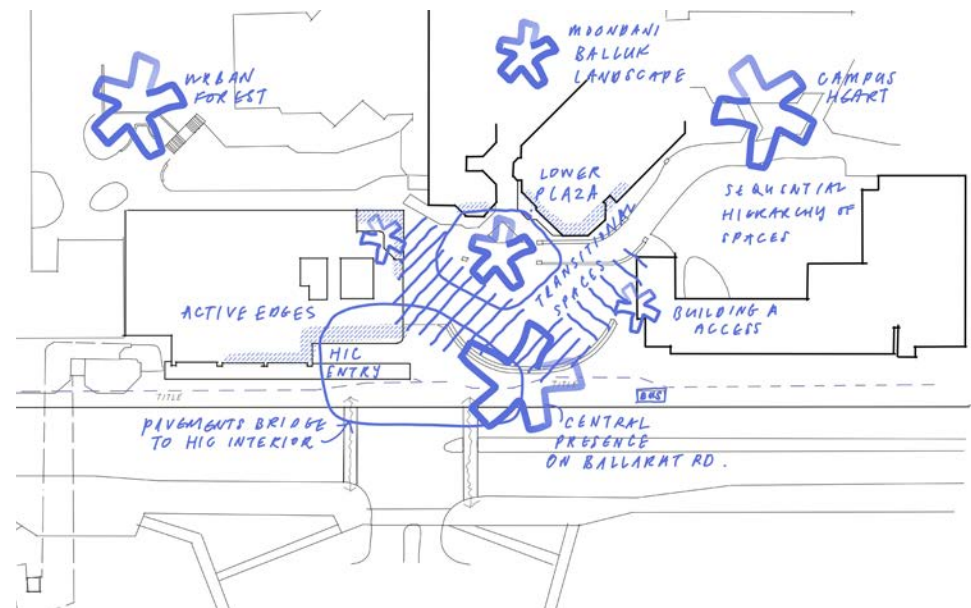
3 Urban Analysis & Design response

Analysis of the urban context has been done in parallel with key VU campus public realm design principles to inform the resulting landscape response.



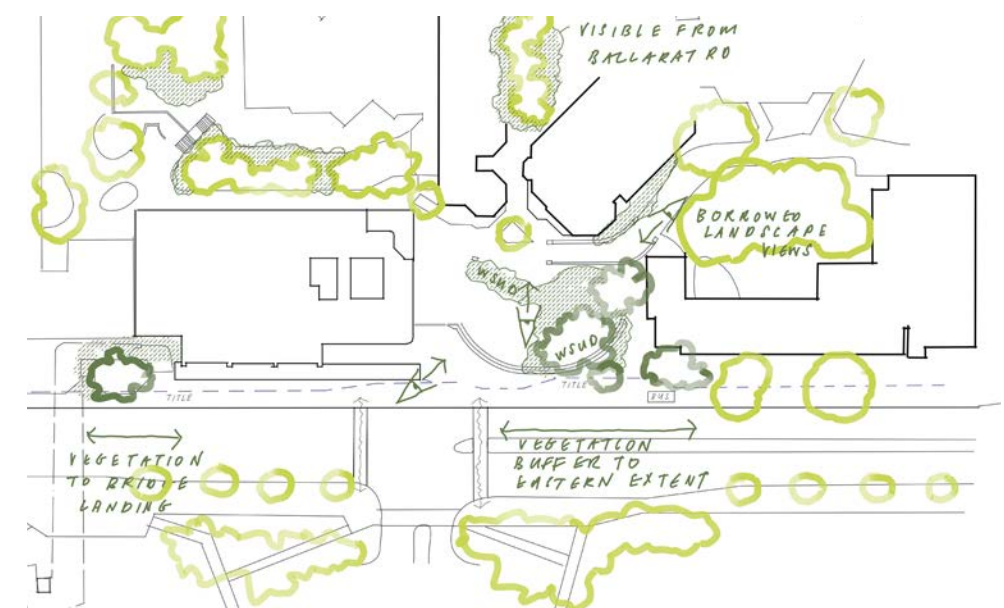
Connection and Movement - Vertical and Ground Plane Connectivity

Direct connectivity into the heart of the campus from Ballarat Road and the New Footscray Hospital are fundamental to VU's vision. This includes the provision of all-abilities vertical access via a dedicated pedestrian lift and series of ramps/walkways.



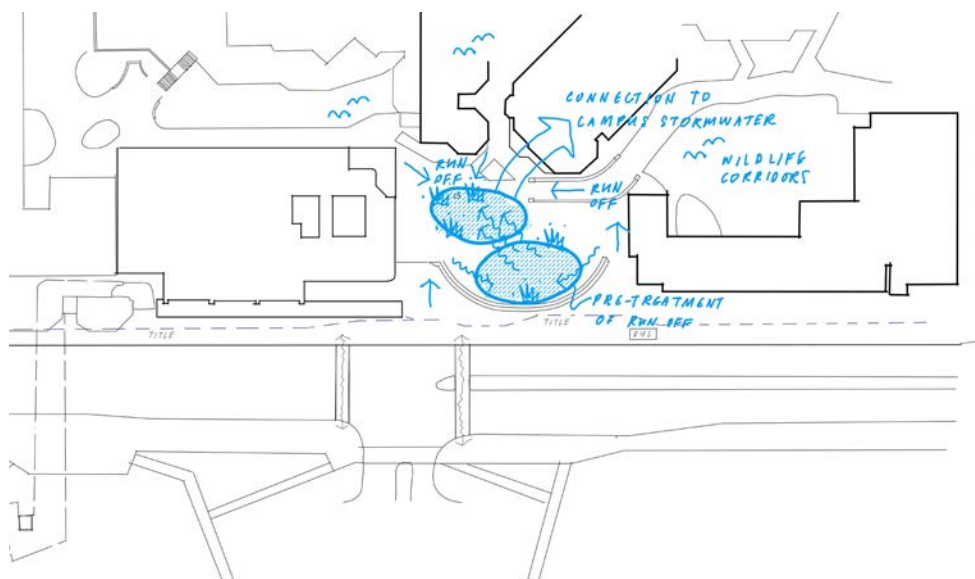
Identity and Campus Life - Hierarchy of linked Destinations

VU aspires to connect existing destinations with new public spaces to foster greater collaboration and connection between all who visit the campus. A recognisable presence on Ballarat Road is pivotal to the University's vision for its role as a place of opportunity for Melbourne's west.



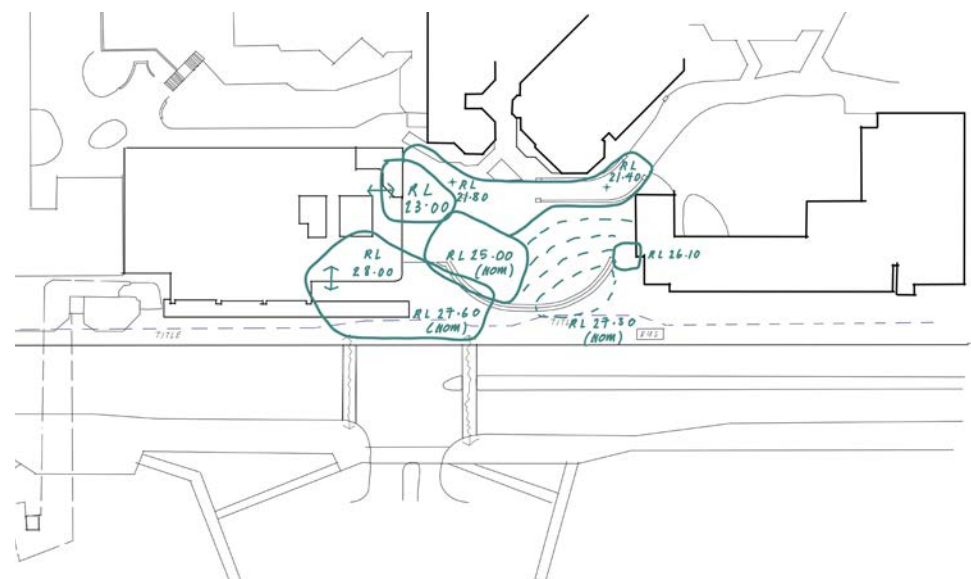
Public Space and Natural Environment - Vegetation

Locating campus buildings within the landscape is part of the VU Masterplan and aims to reconnect the university with its natural setting. The planting palette reflects the site's proximity to the Maribyrnong River and will offer a range of experiences, micro-climates and borrowed vistas.



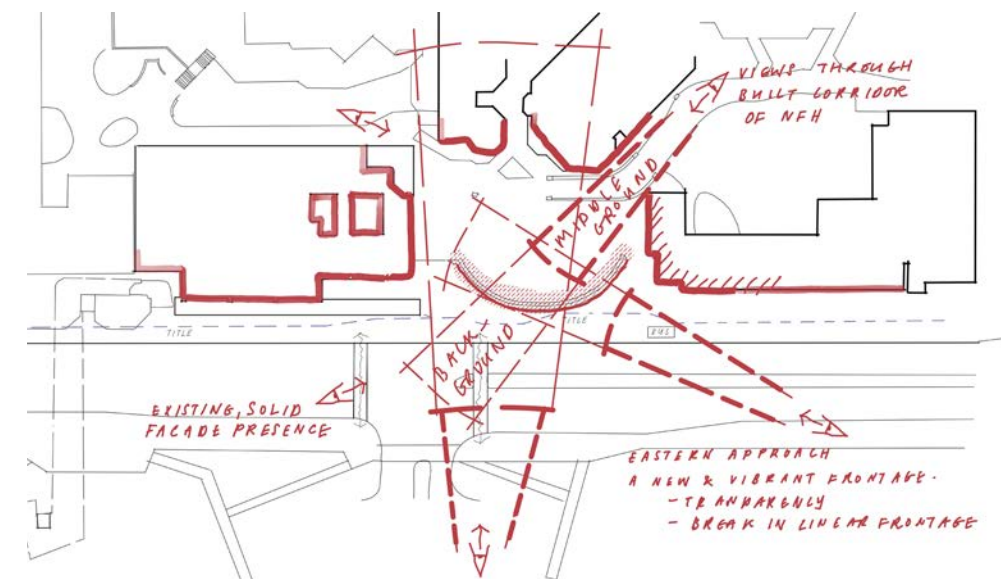
Public Space and Natural Environment - Water and Biodiversity

The demolition of Building G south results in a newly permeable area that will find expression in the river escarpment landscape language and corresponding planting palette. Stormwater runoff from both upper and lower levels will be channelled into WSUD rain gardens.



Public Space and Natural Environment - Topography

An existing curved retaining wall will remain as an expression of the steep site while a terraced landscape with interstitial spaces will step down to the VU High Street (lower level). Landscape boulders will soften this expression and evoke the river escarpment.



Built edges and view corridors

Existing and new built edges will border the Campus Gateway and provide an architectural backdrop to this landscape setting. Generous tree planting will provide an organic counterpoint to this with the tree canopy offering seasonal variance and a biodiverse habitat.



4 Landscape Urban Design Principals

Celebrate the CHTF as the Gateway between the VU campus and the Footscray Community

1. Bring the campus out to the street by continuing the landscape grain of the campus
2. Project a vibrant presence along the VU High Street through active frontages and activity
3. Express elements of both the University's and Footscray's character in the campus entry

1. Implement planting and landscape treatments that contrast with the linear street frontage of Ballarat Road

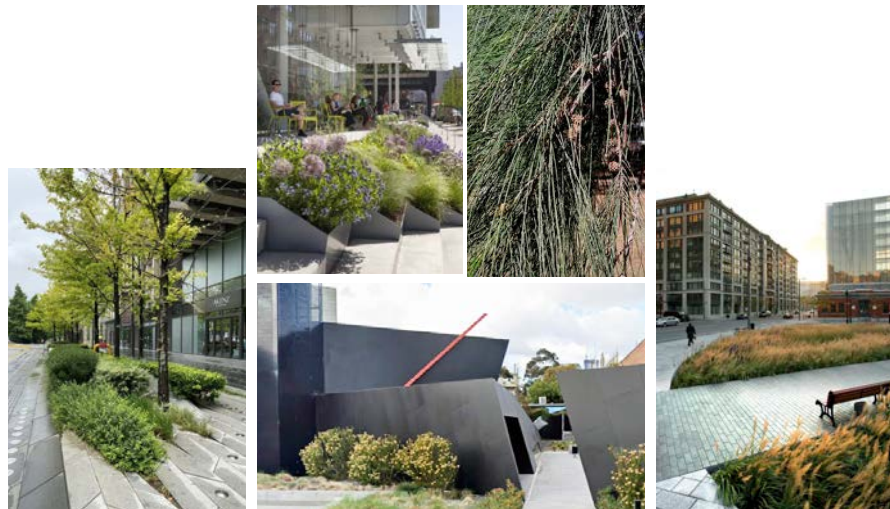
1. Native planting palette to reflect First Nations cultural significance and also encourage biodiversity
2. Break in tree planting to enhance sightlines to and from campus entry
3. Non-linear edges against building lines
4. Dense, textured low level planting against architectural backdrop
5. Sightlines through to campus tree canopy and views beyond
6. Low level grasses that define entry allowing clear sightlines

2. Position the campus entry within the Ballarat Road streetscape and enhance connectivity with the New Footscray Hospital

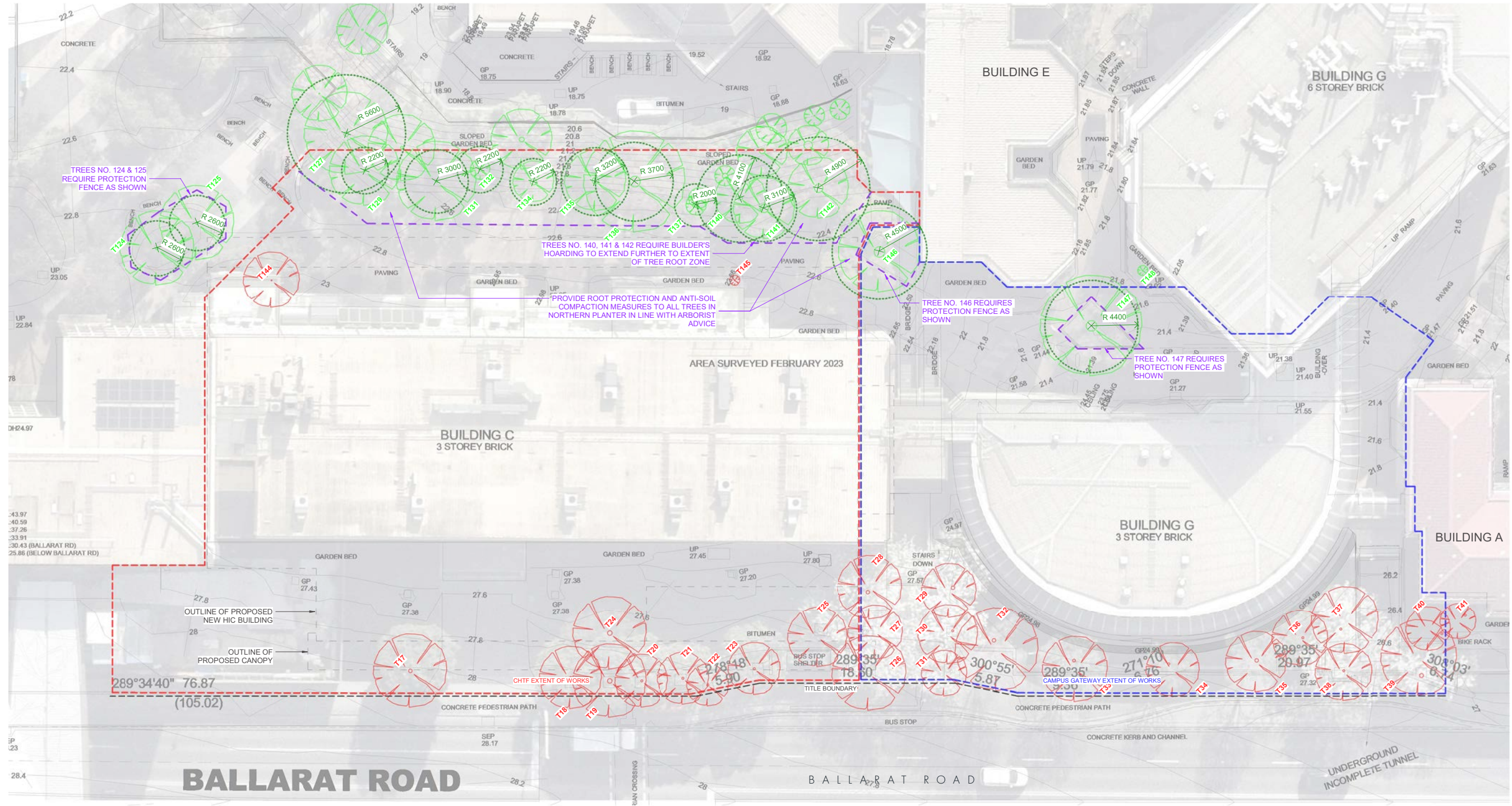
1. Mix of clustered & legacy tree planting along Ballarat Rd frontage continuing this historical approach. Also an opportunity for First Nations expression of Country
2. Contrast materials and textures with street at campus entry for definition
3. Provide breaks in planting to encourage sightlines to and from the campus entry adjacent the CHTF
4. Pedestrian scale detailing and landscape elements
5. Clear pedestrian connections across Ballarat Road

3. Transition from the public frontage to campus facing, pedestrian focussed places

1. Offer a visually and acoustically protected landscape experience within the campus heart
2. Stepped zones from public to semi-public realm realised in material treatments
3. Retain connections between existing landscape places
4. Support smaller gathering opportunities off the main corridor
5. Screen and buffer university operations from active areas
6. Integrate WSUD initiatives in landscape



5 Site survey and tree retention/removal plan

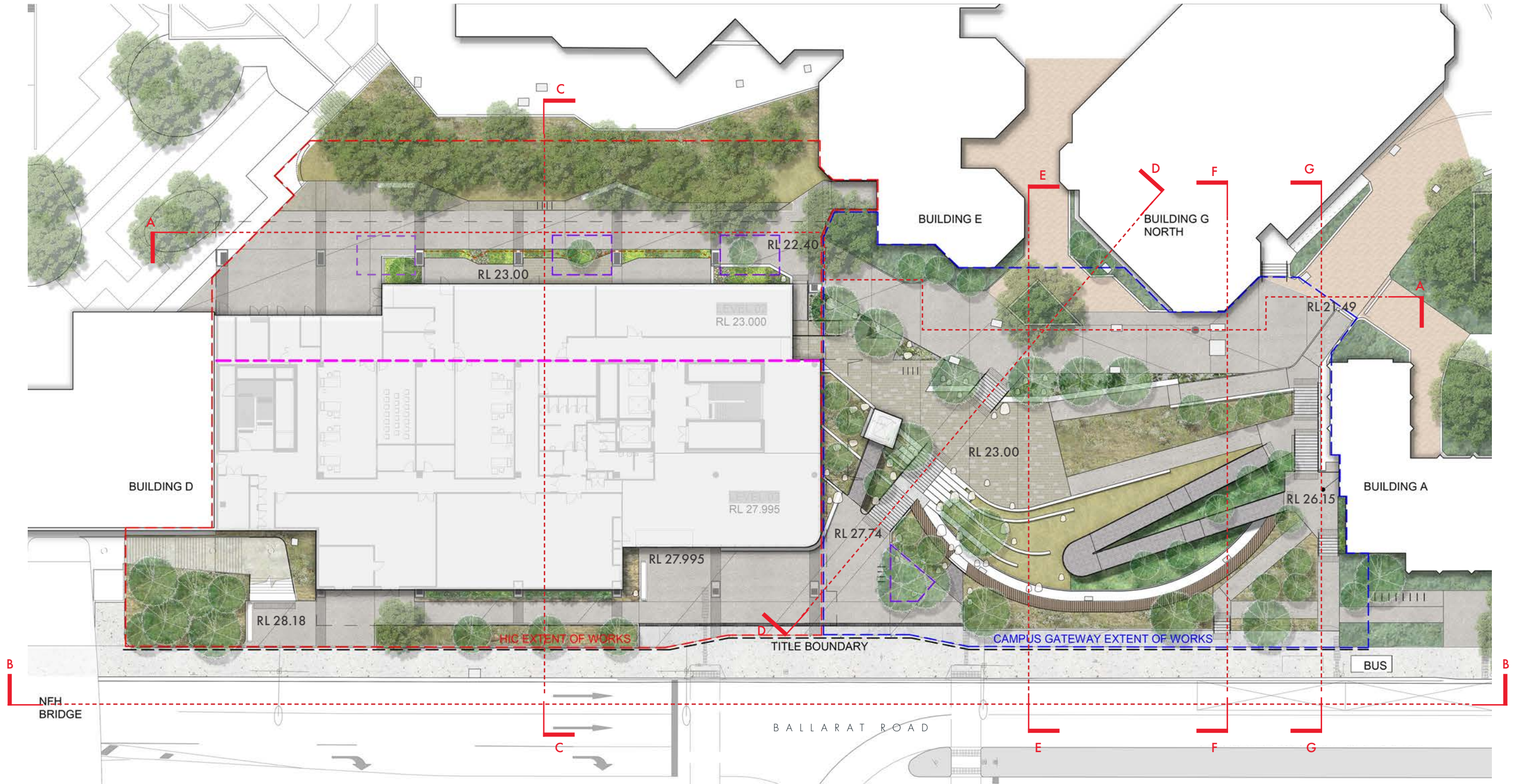


LEGEND

- EXISTING TREE TO BE REMOVED
- EXISTING TREE TO BE RETAINED & PROTECTED
- TREE PROTECTION ZONE (TPZ)
- STRUCTURAL ROOT ZONE (SRZ)
- TREE PROTECTION FENCE

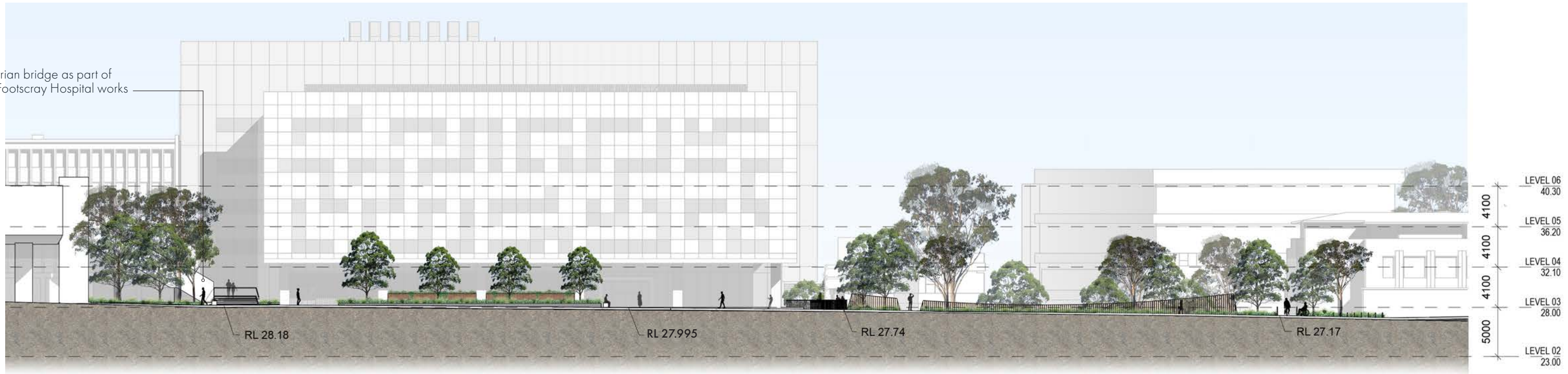


6 Landscape Plan



7 Landscape Elevations

Pedestrian bridge as part of New Footscray Hospital works



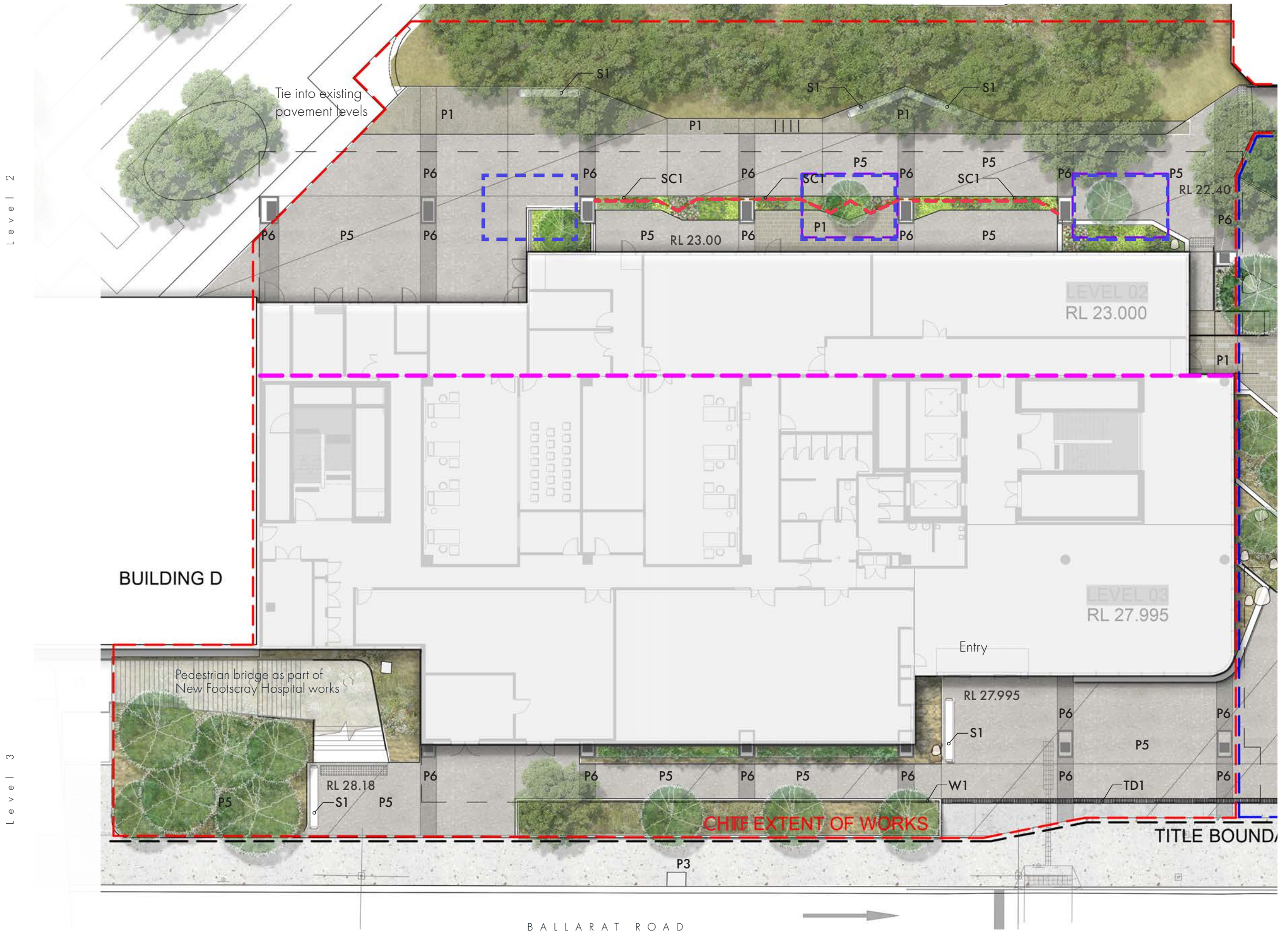
ELEVATION A - Level 3 BALLARAT ROAD



SECTION BB - Level 2 CAMPUS GATEWAY/HIGH STREET

8 CHTF/Campus Gateway - Western end

- Legend**
- - - Extent of works
 - - - Title Boundary
 - - - Structural root cell
Stratavault or approved equivalent
- | | |
|--|---|
| P1 | Stone Unit Paving (vehicle rated hatched) |
| P2 | Stone unit with etched pattern |
| P3 | Grey concrete pavement |
| P4 | Compacted gravel |
| P5 | Exposed aggregate concrete with decorative saw cuts |
| P6 | Exposed aggregate concrete with etched pattern |
| P7 | Existing concrete slab retained and resurfaced |
| P8 | Existing brick pavement |
| W1-5 | Concrete landscape walls as scheduled |
| RMP1-2 | Steel framed raised ramp |
| GB1-4 | Garden beds as scheduled |
| | Existing trees, retained. Removed where shown |
| | Proposed trees Refer to Planting schedule |
| | Landscape boulder |
| BAL2 | Custom steel entry screen as scheduled |
| | Bike hoops - CSA BR7008 (image page 07) |
| BAL1 | Balustrade as scheduled |
| - - - | Perforated screen as scheduled |
| - - - | Handrail as scheduled |
| S1 | Seat/bench |
| TD1 | Trench drain |

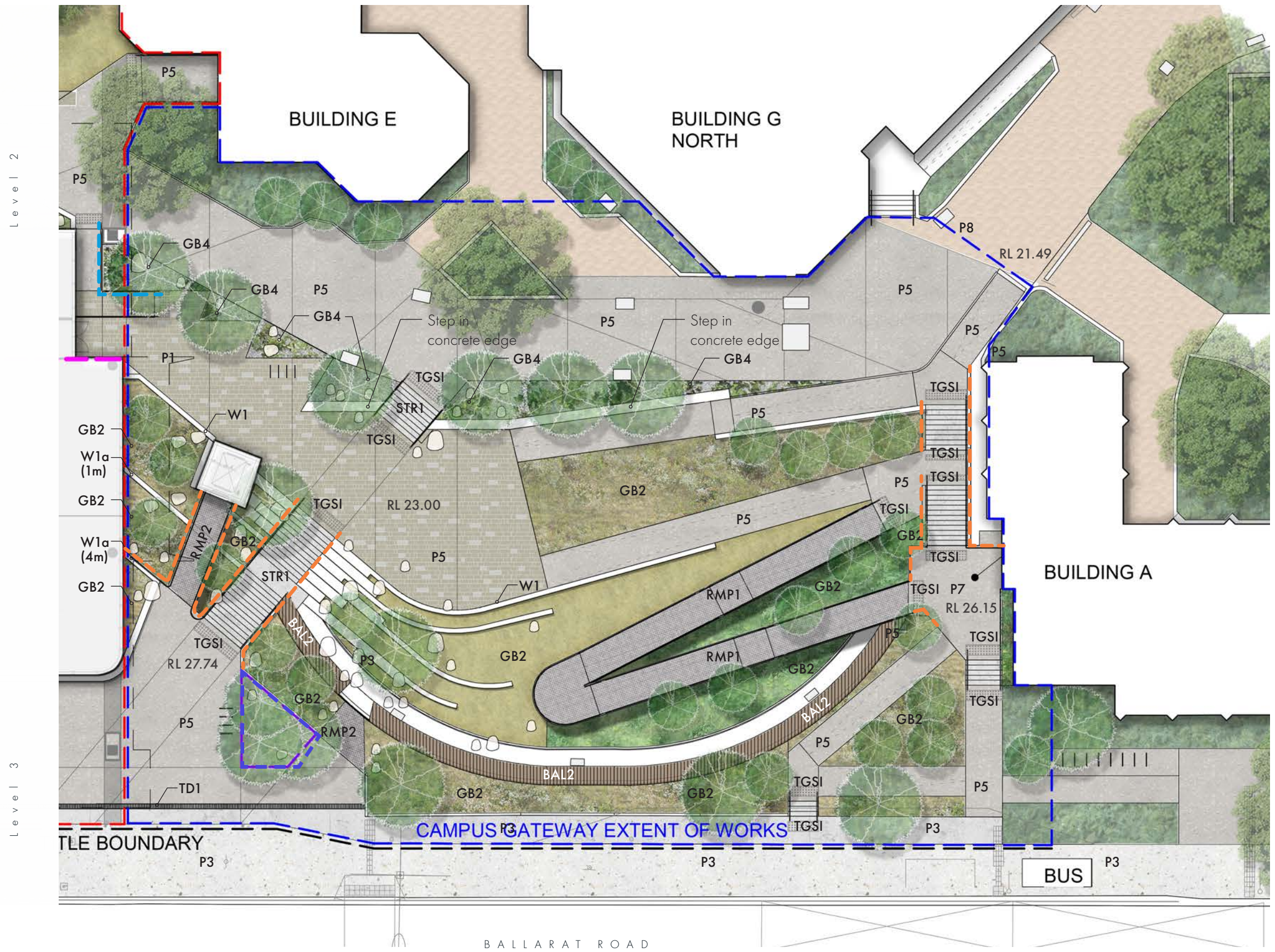


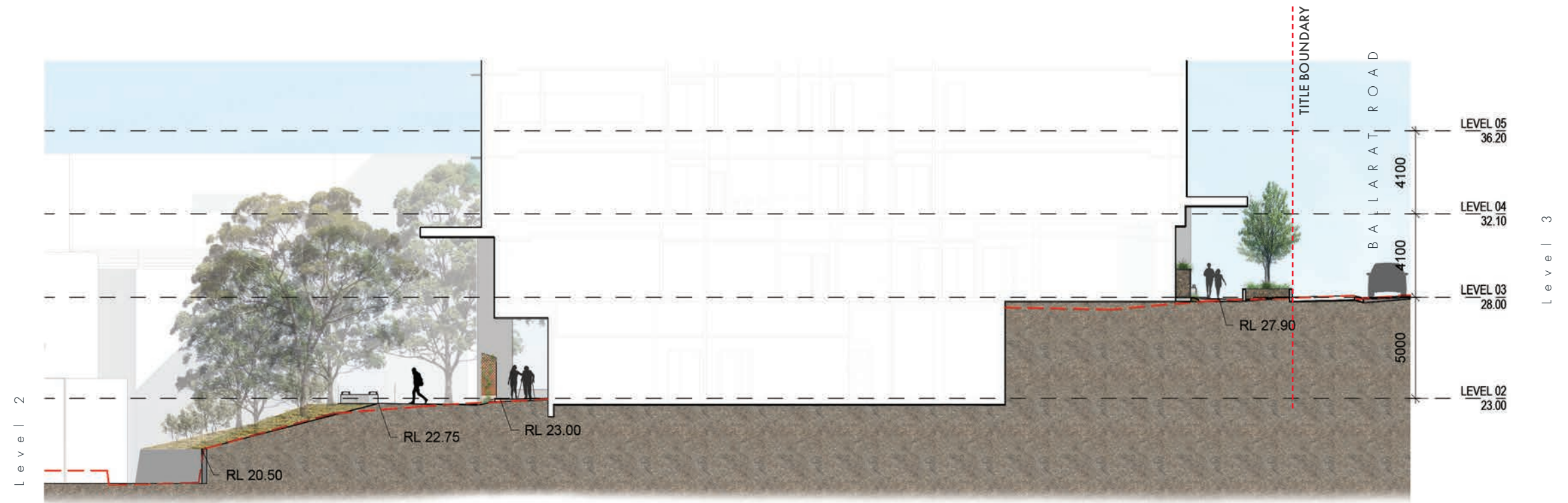
9 CHTF/Campus Gateway - Eastern end

Legend

- - - Extent of works
- - - Title Boundary
- - - Structural root cell
Stratavault or approved equivalent

- P1 Stone Unit Paving (vehicle rated hatched)
- P2 Stone unit with etched pattern
- P3 Grey concrete pavement
- P4 Compacted gravel
- P5 Exposed aggregate concrete with decorative saw cuts
- P6 Exposed aggregate concrete with etched pattern
- P7 Existing concrete slab retained and resurfaced
- P8 Existing brick pavement
- W1-5 Concrete landscape walls as scheduled
- RMP1-2 Steel framed raised ramp
- GB1-4 Garden beds as scheduled
- Existing trees, retained.
Removed where shown
- Proposed trees
Refer to Planting schedule
- Landscape boulder
- BAL2 Custom steel entry screen as scheduled
- Bike hoops - CSA BR7008 (image page 07)
- Balustrade as scheduled
- SC1 Perforated screen as scheduled
- HR1 Handrail as scheduled
- S1 Seat/bench
- TD1 Trench drain





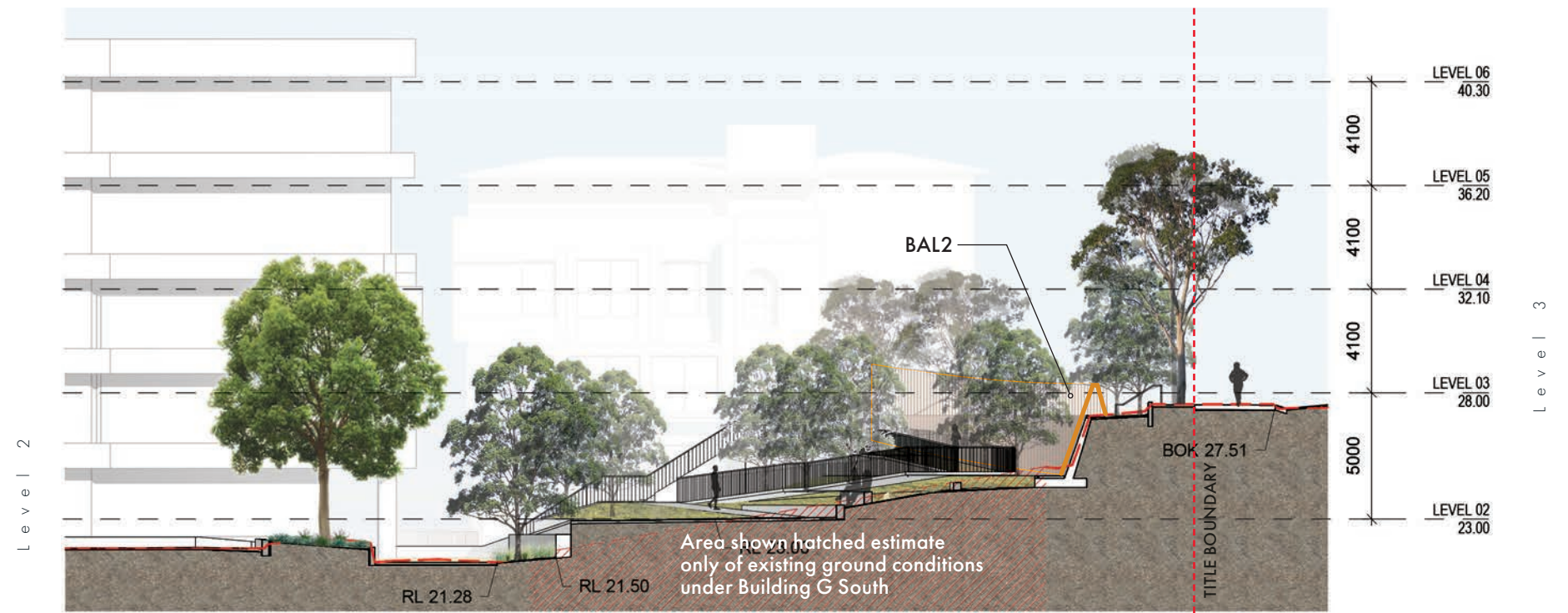
SECTION C



SECTION D

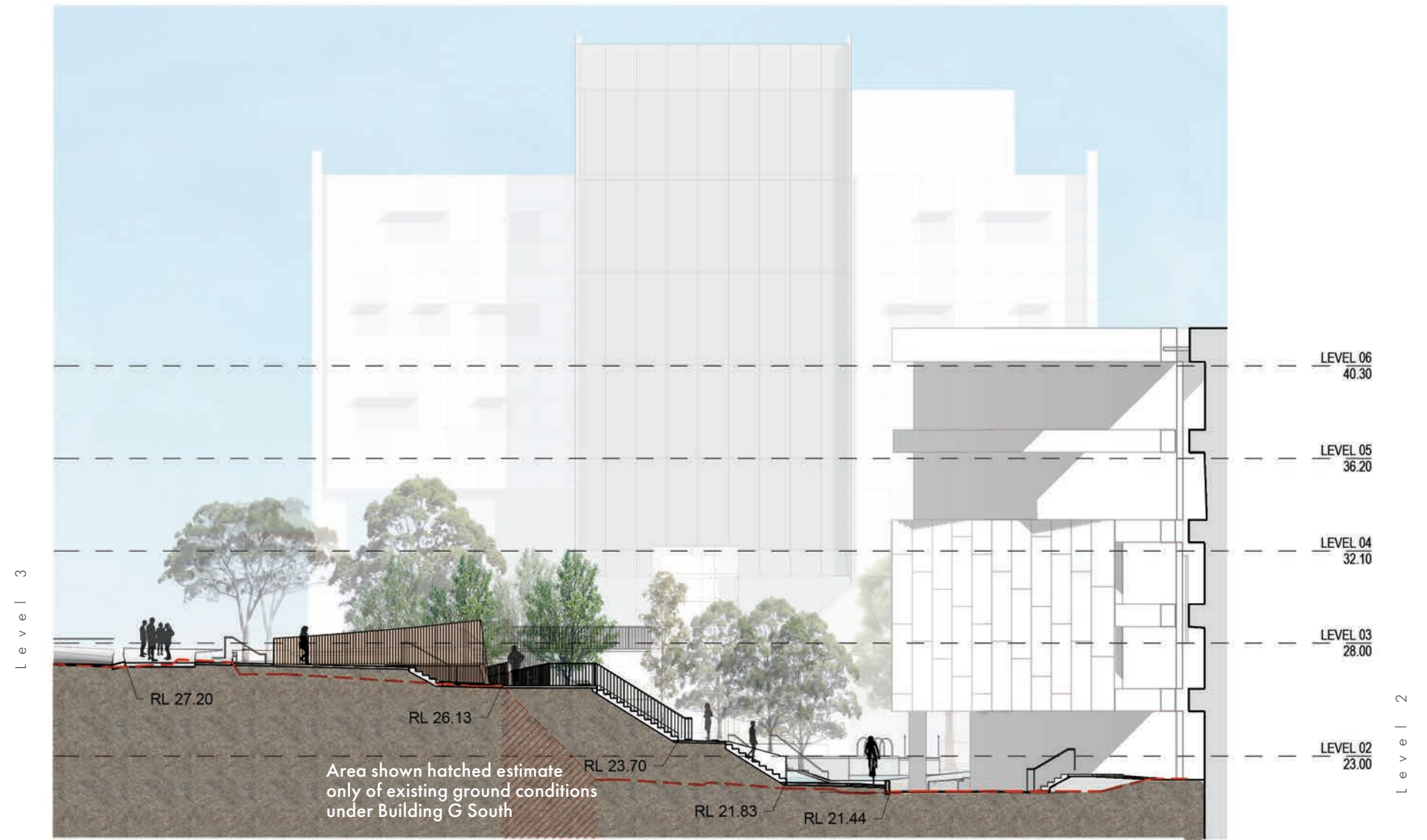
Sections

SECTION E



SECTION F





SECTION G

Indigenous planting palette

Sited within the Victorian Volcanic Plain bioregion and directly adjacent to the Gippsland Plain bioregion, the proposed landscape has the unique potential to showcase a vast range of plant species that are indigenous to the site. These species would have been prominent throughout the site prior to colonial settlement and played a key role in supporting the ecosystem along the Maribyrnong River in this area.

The inclusion of such plants speaks to the enduring and continuous presence of the Wurundjeri in this place and we seek to explore the potential for this to share cultural knowledge with all who visit the campus. This planting approach would look to supplement the culturally grounded landscape already realised in the Moondani Balluk courtyard.

We have begun discussions with Victoria University's Iramoo grassland centre & nursery to explore the potential of sourcing local provenance plants for proposed indigenous species. These discussions and review of Ecological Vegetation Classes (EVC) relevant to the bioregions have informed the proposed indigenous planting palettes.

Proposed Planting Zones

The existing grades throughout the site provide an opportunity to further drive the unique narrative of the site being situated on the verge of both the Victorian Volcanic Plain & Gippsland Plain Bioregions and its connection to the Maribyrnong River.

Escarpment

The escarpment planting zone has been predominantly informed by the Plain Grassland and Grassy Woodland EVC plant species, within the Victorian Volcanic Plains bioregion. Through the selection of dominant clear-trunk native trees and low native shrubs & grasses, this zone highlights the main entry from Ballarat Road and primary path network through the site and is symbolic of VU's positioning and relationship to the adjacent Gippsland Plain bioregion and Maribyrnong River.

Tributary

This planting zone is comprised of plant species from the Swamp Scrub and Brackish Grassland EVCs, which belong to the Gippsland Plain bioregion. Proposed through the secondary thoroughfare on site, slower and more 'permeable' movement is promoted, with the inclusion of dense tree/shrub planting. This creates a sense of discovery and enhances sensory experiences through this section.

Billabong

The plant species proposed in billabong planting zone have been informed by the Brackish Wetland EVC, from the Gippsland Plain bioregion. This area is the lowest point of the site and will predominantly act as a WSUD area and collect/process run-off prior to making its way back into the stormwater system.

Sensory

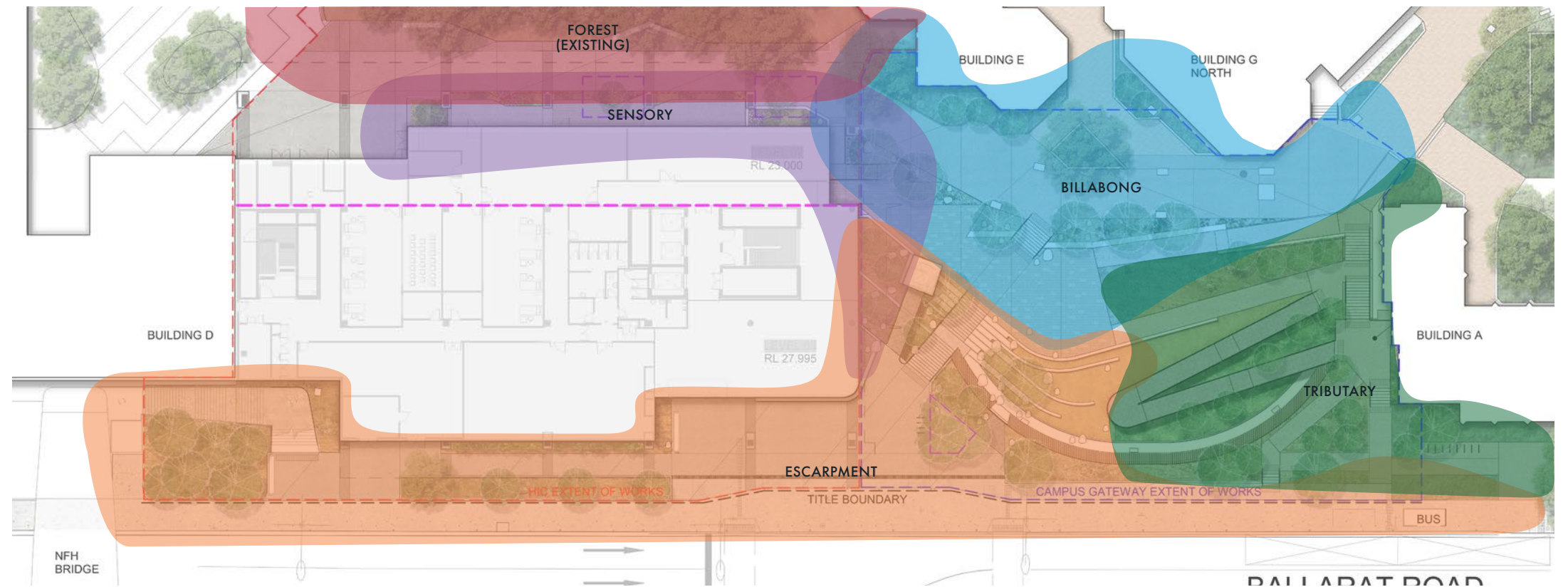
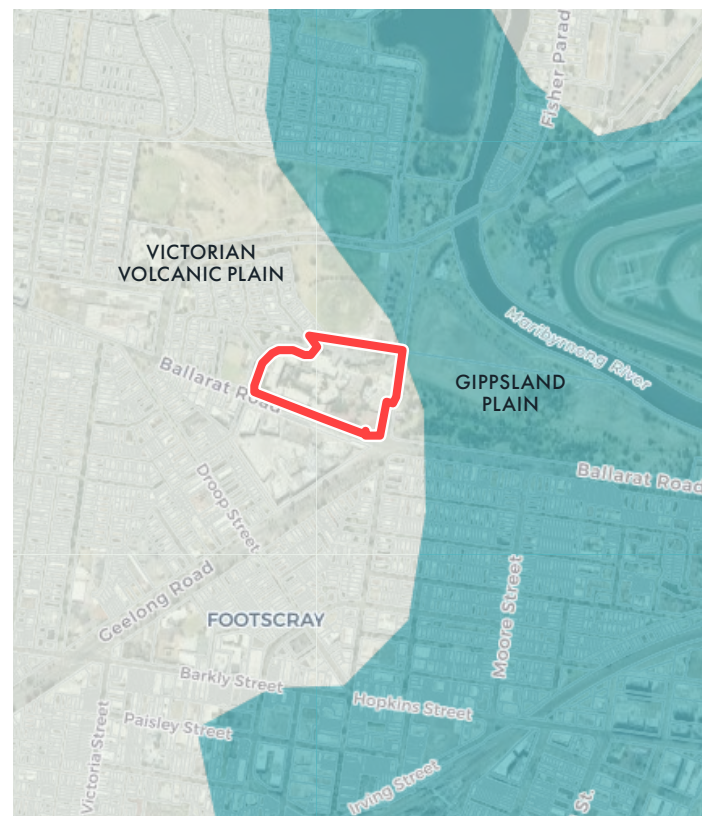
A Sensory zone will offer a space that allows visitors to engage with their senses through textural surfaces, planting, acoustics, smell and visual delight. A meditative space that will be screened from the campus walk, this area offers a reprieve from campus life. It will be characterized by colourful wildflowers, low shrubs, climbers and will also provide a productive garden space.

Forest

Due to the construction works of the CHTF building, re-vegetation of the existing forest zone will be required due to the removal of existing trees/vegetation. The sensory planting palette will spill out into that zone to provide understory ground cover.



(image credit Iramoo Nursery, Victoria University)



12 Planting Palettes

Escarpment Planting

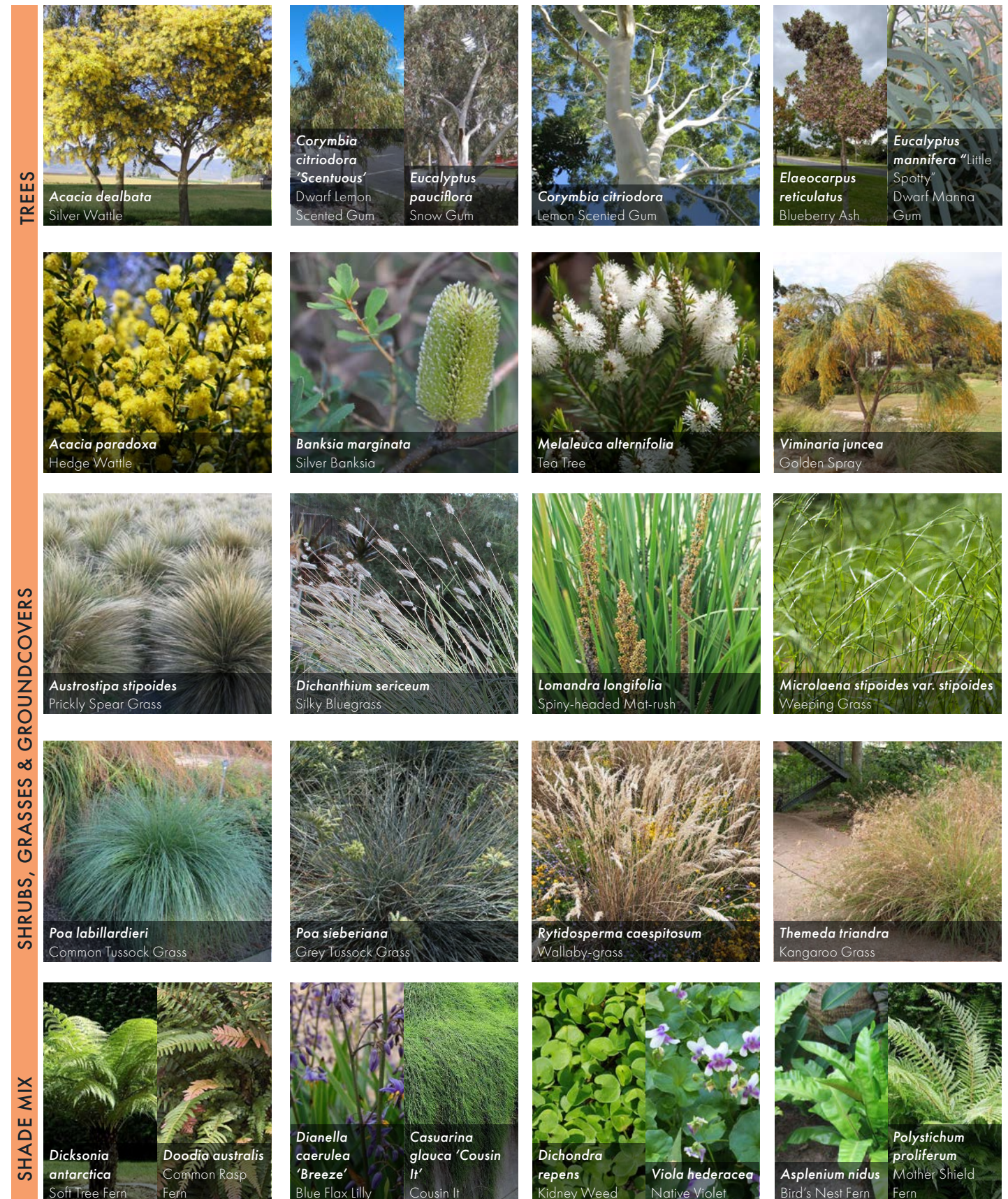
	Botanic Name	Common Name	Native	Indigenous*
Trees	<i>Acacia dealbata</i>	Silver Wattle	*	*
	<i>Corymbia citriodora</i>	Lemon Scented Gum	*	
	<i>Corymbia citriodora</i> 'Scentuous'	Dwarf Lemon Scented Gum	*	
	<i>Eucalyptus pauciflora</i>	Snow Gum	*	*
	<i>Elaeocarpus reticulatus</i>	Blueberry Ash	*	
	<i>Eucalyptus mannifera</i> "Little Spotty"	Dwarf Manna Gum	*	
Shrubs	<i>Acacia paradoxa</i>	Hedge Wattle	*	*
	<i>Banksia marginata</i>	Silver Banksia	*	*
	<i>Melaleuca alternifolia</i>	Tea-tree	*	*
	<i>Viminaria juncea</i>	Golden Spray	*	*
Grasses & Groundcovers	<i>Austrostipa stipoides</i>	Prickly Spear Grass	*	*
	<i>Dichanthium sericeum</i>	Silky Bluegrass	*	*
	<i>Lomandra longifolia</i>	Spiny-headed Mat-rush	*	*
	<i>Microlaena stipoides</i>	Weeping Grass	*	*
	<i>Poa labillardieri</i>	Common Tussock Grass	*	*
	<i>Poa sieberiana</i>	Grey Tussock Grass	*	*
	<i>Rytidosperma caespitosum</i>	Wallaby-grass	*	*
	<i>Themeda triandra</i>	Kangaroo Grass	*	*
Shade Mix	<i>Dicksonia antarctica</i>	Soft Tree Fern	*	
	<i>Dianella caerulea</i> 'Breeze'	Blue Flax Lilly	*	
	<i>Dichondra repens</i>	Kidney Weed	*	*
	<i>Doodia australis</i>	Common Rasp Fern	*	*
	<i>Asplenium nidus</i>	Bird's Nest Fern	*	
	<i>Casuarina glauca</i> "Cousin It"	Cousin It	*	
	<i>Polystichum proliferum</i>	Mother Shield Fern	*	*

Note:

- Planting palette indicative only. Plant species to be added/removed subject to design development.

* Indigenous to the bioregion EVCs relevant to the site:

- Victorian Volcanic Plain bioregions: [EVC 55: Plains Grassy Woodland](#) // [EVC 132 Plains Grassland](#)
- Gippsland Plain bioregion, [EVC 53: Swamp Scrub](#) // [EVC 656: Brackish Wetland](#) // [EVC 934: Brackish Grassland](#)



Tributary Planting

	Botanic Name	Common Name	Native	Indigenous*
Trees	<i>Allocasuarina verticillata</i>	Drooping Sheoak	*	*
	<i>Acacia dealbata</i>	Silver Wattle	*	*
	<i>Banksia marginata</i>	Silver Banksia	*	*
	<i>Viminaria juncea</i>	Golden Spray	*	*
Shrubs, Grasses & Groundcovers	<i>Correa glabra</i>	Rock Correa	*	*
	<i>Daviesia latifolia</i>	Hop Bitter-pea	*	
	<i>Dillwynia cinerascens</i>	Grey Parrot-pea	*	*
	<i>Goodenia ovata</i>	Hop Goodenia	*	*
	<i>Grevillea 'Scarlet Sprite'</i>	Rosemary Grevillea	*	*
	<i>Indigofera australis</i>	Austral Indigo	*	*
	<i>Leptospermum lanigerum</i>	Woolly Tea-Tree	*	*
	<i>Grevillea Cooroora</i>	Cascade	*	
	<i>Lotus Berthelotti</i>	Red Flash	*	
	<i>Carpobrotus glaucus 'Aussie Rambler'</i>	Native Pig Face	*	*
<i>Casuarina glauca 'Cousin it'</i>	Cousin it Sheoak	*	*	

Billabong Planting

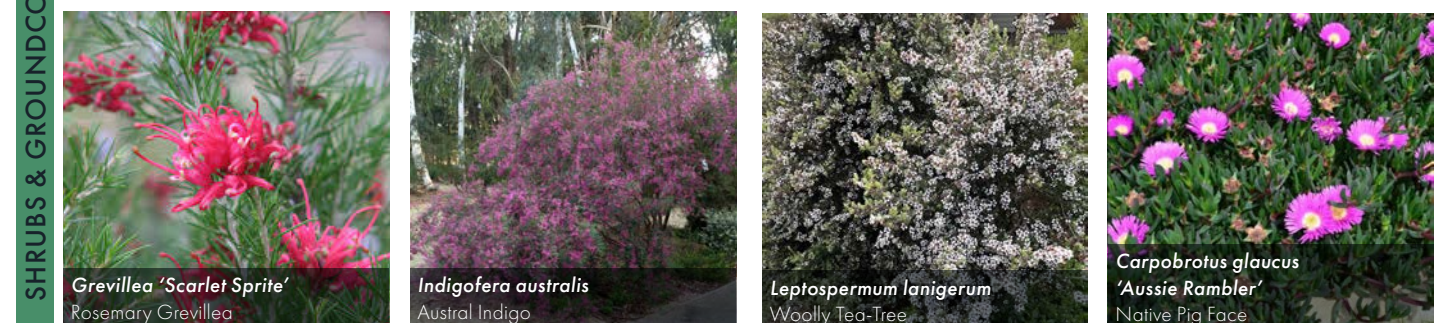
	Botanic Name	Common Name	Native	Indigenous*
WSUD	<i>Eucalyptus alba</i>	White Gum Tree	*	
	<i>Eucalyptus victrix</i>	Little Ghost Gum	*	
	<i>Baumea articulata</i>	Jointed Twig-rush	*	*
	<i>Carex appressa</i>	Tall Sedge	*	*
	<i>Rhagodia parabolica</i>	Fragrant Saltbush	*	*
	<i>Brachyscome basaltica</i>	Basalt Daisy	*	*
	<i>Pycnosorus globulus</i>	Billy Buttons	*	*
	<i>Xerochrysum palustre</i>	Swamp Everlasting	*	*

Note:

- Planting palette indicative only. Plant species to be added/removed subject to design development.

* Indigenous to the bioregion EVCs relevant to the site:

- Victorian Volcanic Plain bioregions: [EVC 55: Plains Grassy Woodland](#) // [EVC 132 Plains Grassland](#)
- Gippsland Plain bioregion, [EVC 53: Swamp Scrub](#) // [EVC 656: Brackish Wetland](#) // [EVC 934: Brackish Grassland](#)



Sensory

	Botanic Name	Common Name	Native	Indigenous*
Trees	<i>Eucalyptus pulverulenta</i> 'Baby Blue'	Silver-leaved Mountain Gum	*	
	<i>Corymbia ficifolia</i> "Baby Scarlet"	Dwarf flowering Gum	*	
Wildflowers, Low Shrubs & Climbers	<i>Brunonia australis</i>	Blue Pincushion	*	*
	<i>Bulbine bulbosa</i>	Bulbine Lilly	*	*
	<i>Burchardia umbellata</i>	Milkmaids	*	*
	<i>Calocephalus citreus</i>	Lemon Beauty-heads	*	*
	<i>Chrysocephalum apiculatum</i>	Common Everlastings	*	*
	<i>Clematis microphylla</i>	Small-leaved Clematis	*	*
	<i>Eryngium ovinum</i>	Blue Devil	*	*
	<i>Hardenbergia violacea</i>	Purple Coral Pea	*	*
	<i>Kenedia prostrata</i>	Running Postman	*	*
	<i>Linum marginale</i>	Native Flax	*	*
	<i>Lobelia pedunculata</i>	Matted Pratia	*	*
	<i>Microseris sp.</i>	Murnong	*	*
	<i>Pelargonium australe</i>	Austral Stork's Bill	*	*
	<i>Pimelea humilis</i>	Common Rice-flower	*	*
	<i>Ptilotus exalatus</i> 'Joey'	Pink Mulla Mulla	*	
	<i>Rhodanthe anthemoides</i>	Chamomile Sunray	*	*
	<i>Stylidium graminifolium</i>	Trigger Plant	*	*
<i>Thysanotus multiflorus</i>	Fringe Lilly	*	*	
<i>Wahlengergia stricta</i>	Tall Bluebell	*	*	

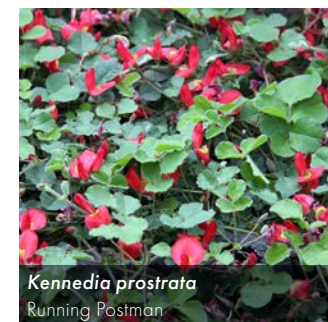
Note:

- Planting palette indicative only. Plant species to be added/removed subject to design development.

* Indigenous to the bioregion EVCs relevant to the site:

- Victorian Volcanic Plain bioregions: [EVC 55: Plains Grassy Woodland](#) // [EVC 132 Plains Grassland](#)
- Gippsland Plain bioregion, [EVC 53: Swamp Scrub](#) // [EVC 656: Brackish Wetland](#) // [EVC 934: Brackish Grassland](#)

WILDFLOWERS, LOW SHRUBS & CLIMBERS



Contact Tract

Melbourne

Wurundjeri Country
Level 6, 6 Riverside Quay, Southbank VIC, Australia 3006
(03) 9429 6133
melbourne@tract.net.au